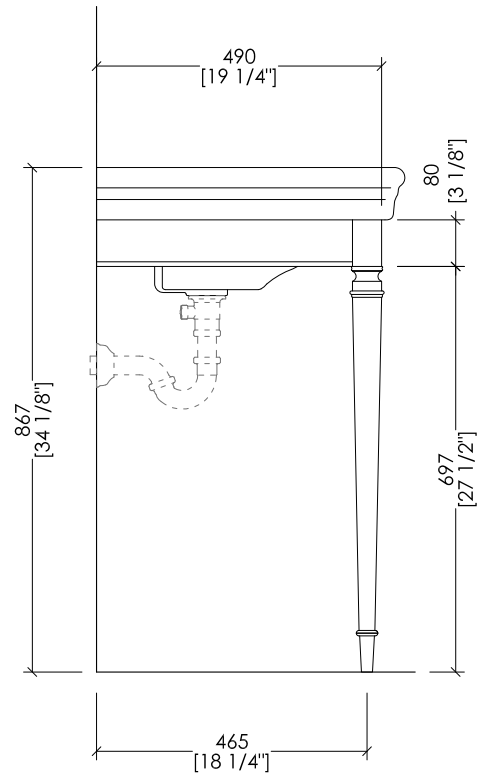
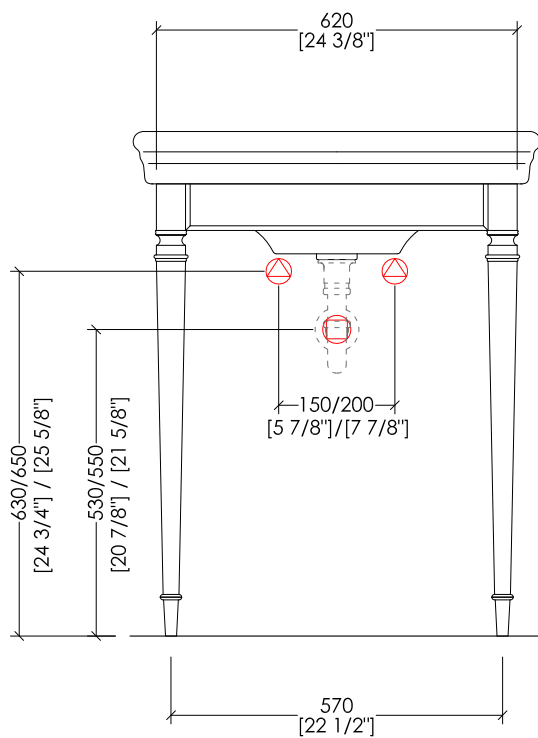
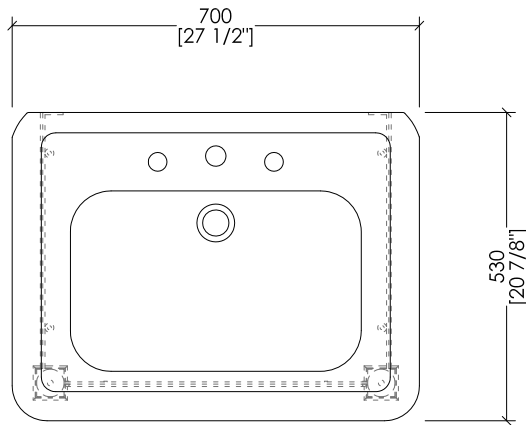


# Devon&Devon

## DUKE CONSOLE



 PREDISPOSIZIONE PER ADDUZIONE ACQUA

 POSITION FOR WATER INLET

 PREDISPOSIZIONE PER SIFONE

 POSITION FOR SIPHON

updating 01|2020

DEDUKECR; DEDUKEOT; DEDUKENK

► STRUTTURA:

MATERIALE ► ottone e alluminio  
FINITURA: cromo | oro chiaro | nickel lucido

► LAVABO ETOILE:

MATERIALE ► porcellana  
FINITURA: bianco

► DIMENSIONI IMBALLO: mm 930x740x190H

► PESO TOTALE: 14.2 Kg

► STRUCTURE:

MATERIAL ► brass and aluminium  
FINISH: chrome | light gold | polished nickel

► ETOILE BASIN:

MATERIAL ► porcelain  
FINISH: white

► PACKAGING SIZE: inch 36 5/8 x 29 1/8 x 7 1/2 H

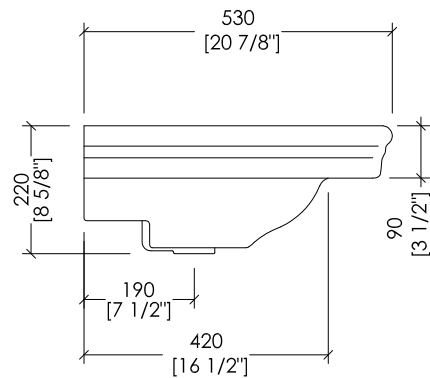
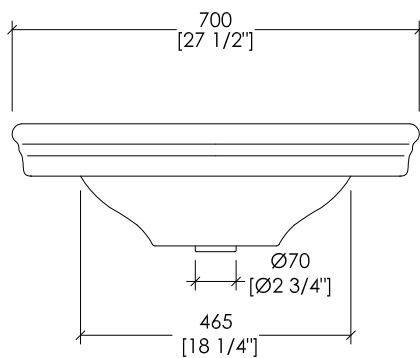
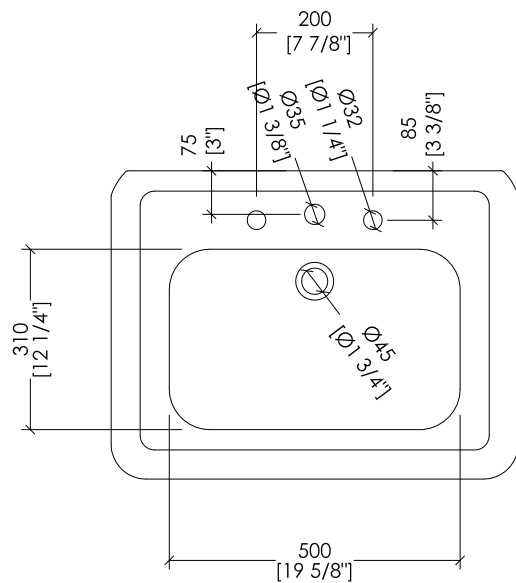
► TOTAL WEIGHT: 31 Lbs

N.B. Tutte le misure sono in millimetri/pollici. Questo disegno è di proprietà Devon&Devon. Non può essere riprodotto o trasmesso a terzi senza autorizzazione.

N.B. All measurements are in millimetres/inch. This drawing is property of Devon&Devon. It may not be reproduced or transmitted to third parties without authorization.

# Devon&Devon

## DUKE CONSOLE



updating 01|2020

IBLG(1-3)FET

- > LAVABO (1-3 FORI)
- > MATERIALE > porcellana
- > FINITURA: bianco
- > TOLLERANZA:  $\pm 2\% \geq 750 \text{ mm}$ ;  $\pm 5\% \leq 750 \text{ mm}$
- > DIMENSIONI IMBALLO: mm 720x260x540H
- > PESO: 23,8 Kg

**N.B.** Tutte le misure sono in millimetri/pollici. Questo disegno è di proprietà Devon&Devon. Non può essere riprodotto o trasmesso a terzi senza autorizzazione.

- > BASIN (1-3 TAP HOLES)
- > MATERIAL > porcelain
- > FINISH: white
- > TOLERANCE:  $\pm 2\% \geq 29 1/2'$  inch;  $\pm 5\% \leq 29 1/2'$  inch
- > PACKAGING SIZE: inch 28 3/8'x 10 1/4'x 21 1/4'H
- > WEIGHT: 52 Lbs

**N.B.** All measurements are in millimetres/inch. This drawing is property of Devon&Devon. It may not be reproduced or transmitted to third parties without authorization.