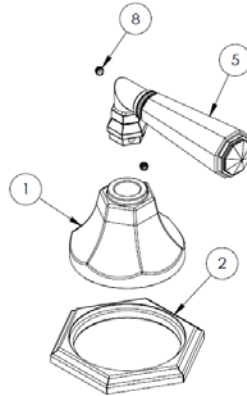
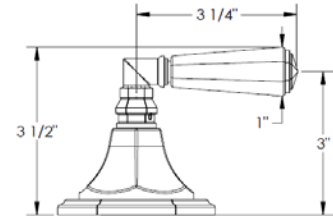


### HANDLE TRIMS

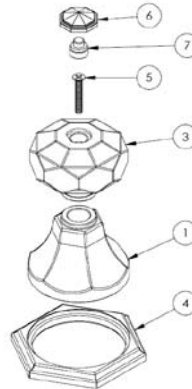
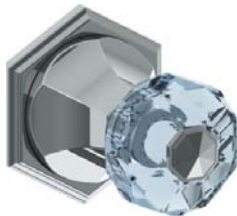
#### Roosevelt (Code: CRY4)



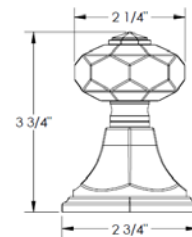
ITEM NO.	PART NUMBER	QTY.
1	X-ESC	1
2	XX-ESC-RING	1
5	CRY4-CRSTL-LVR-INSRT	1
8	SSCUPSKT 0.164-32x0.125-HX-S	2



#### Marmont (Code: CRY5)



ITEM NO.	PART NUMBER	QTY.
1	X-ESC	1
3	CRY5-CRSTL-KNOB	1
4	XX-ESC-RING	1
5	CR-FHM1 0.164-32x1x1-S	1
6	CRY4-LVR-END	1
7	CRY5-CAP-INSRT	1



### Specification from Finished Wall to Tip of Broach Stem

HANDLE TRIM #	MEASUREMENT (IN.)
CRY4	3 1/8
CRY5	2 7/8

Note: When fitting handle it may be necessary to shorten broach stem and/or threaded nipple to eliminate gap between handle and escutcheon

#### **IMPORTANT INSTALLATION INFORMATION**

- USE TEFLON TAPE OR PIPE SEALANT FOR THREADED CONNECTIONS
- DO NOT USE PLUMBER'S PUTTY ON ANY OF THE BRASS COMPONENTS  
This will cause the finish to tarnish and void the warranty. A non-corrosive Alkoxy Silicone is recommended.
- DURING SWEATING OF LINES DO NOT OVERHEAT CASTING  
Overheating may cause damage to internal mechanism
- COPPER ADAPTORS MAY BE REQUIRED TO COMPLETE YOUR INSTALLATION

**For technical support, please call 718-257-2800**