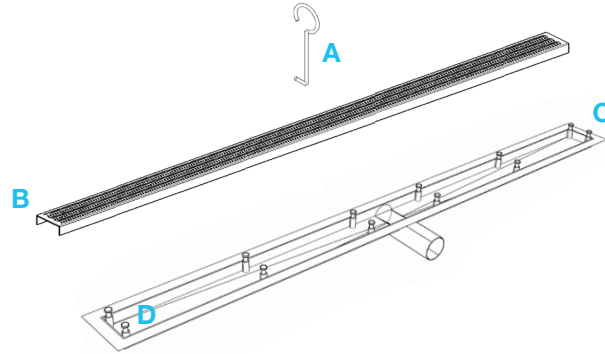


DELMAR LINEAR DRAIN STANDARD LENGTH WITH SIDE OUTLET FLANGE EDGE

Kit Includes:

- A** Lifting Key
- B** Grate
- C** Flange Edge Base
- D** Leveling Legs

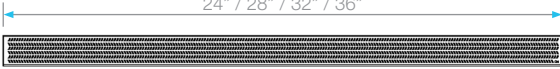


Specifications

B Grate - Top View

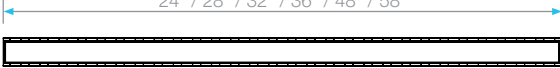
Nami - Kai

24" / 28" / 32" / 36"



Mist

24" / 28" / 32" / 36" / 48" / 58"



Delta - Wedgewire - Lotus

24" / 28" / 32" / 36" / 48" / 58"



Side View

Nami - Kai - Delta - Lotus - Wedgewire

3.15"



Mist (Tile-in)

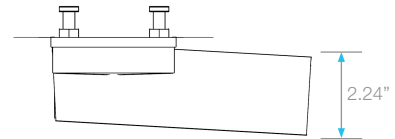
2.55"



*Note: Tile-In grate accepts flooring material up to 1" tickness

C Base - Side View

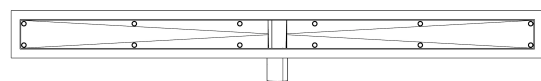
1" 3.35" 1"



Top View

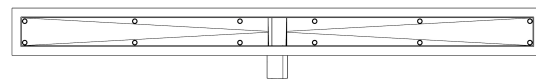
Nami - Kai

24" / 28" / 32" / 36"



Delta - Mist - Wedgewire - Lotus

24" / 28" / 32" / 36" / 48" / 58"







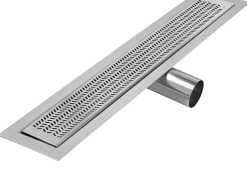

Side View



Features

- Stainless Steel 316 Gauges:
 Wedgewire grate: 8 gauges = 5mm for edge bars and 9 gauges = 4mm for inside bars.
 All other grates: 16 gauge = 1.5 mm.
 Base: 18 gauge = 1.2 mm
- Grate can be removed completely for cleaning.
- Side Outlet Flange Edge Base is intended for use with modern waterproofing method

Complete Kit

 <p>Wedgewire</p>		Satin		Polished		Black
		Length	SKU	SKU	SKU	SKU
	24"	33.700.24FSO ST	33.700.24FSO PS	33.700.24FSO BK		
	28"	33.700.28FSO ST	33.700.28FSO PS	33.700.28FSO BK		
	32"	33.700.32FSO ST	33.700.32FSO PS	33.700.32FSO BK		
	36"	33.700.36FSO ST	33.700.36FSO PS	33.700.36FSO BK		
 <p>Kai</p>		Satin				
		Length	SKU			
	24"	33.200.24FSO ST				
	28"	33.200.28FSO ST				
	36"	33.200.36FSO ST				
 <p>Mist (Tile-in)</p>				Satin		
				Length	SKU	
				24"	33.500.24FSO ST	
				28"	33.500.28FSO ST	
				32"	33.500.32FSO ST	
				36"	33.500.36FSO ST	
 <p>Delta</p>		Satin		Polished		
		Length	SKU	SKU		
	24"	33.300.24FSO ST	33.300.24FSO PS			
	28"	33.300.28FSO ST	33.300.28FSO PS			
	32"	33.300.32FSO ST	33.300.32FSO PS			
	36"	33.300.36FSO ST	33.300.36FSO PS			
 <p>Nami</p>					Satin	
				Length	SKU	
				24"	33.100.24FSO ST	
				28"	33.100.28FSO ST	
				36"	33.100.36FSO ST	
 <p>Lotus</p>		Bronze		Black		Gold
		Length	SKU	SKU	SKU	
	24"	33.400.28FSO BZ	33.400.24FSO BK	33.400.24FSO GD		
	28"	33.400.28FSO BZ	33.400.28FSO BK	33.400.28FSO GD		
	32"	33.400.32FSO BZ	33.400.32FSO BK	33.400.32FSO GD		
	36"	33.400.36FSO BZ	33.400.36FSO BK	33.400.36FSO GD		
	48"	33.400.48FSO BZ	33.400.48FSO BK	33.400.48FSO GD		
58"	33.400.58FSO BZ	33.400.58FSO BK	33.400.58FSO GD			

Note: Installer must verify all rough-in dimensions prior to installation and consult local and national codes. Conformity and compliance to local and national codes are the responsibility of the installer. Dimensions are subject to Manufacturers tolerance and change without notice. We can assume no responsibility for use of superseded or voided data.