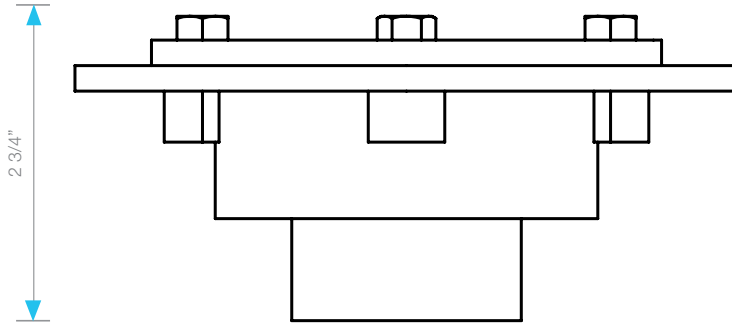


COMPONENTS



Cast Iron Drain Flange

- Clamp down floor drain
- 2 - 1 1/2 NPSL Thread
- Two versions:
  - No-Hub: Fits 2" Cast Iron Pipes with no hub connection.
  - FIP: Fits 2" IPS Cast Iron Pipes drain rough.

SKU:  
No-Hub: 83.FLG.2.CI  
FIP: 83.FLG.2.CI.IP

