



## ENGINEERING EXCELLENCE

Americana Series #2AM201

PARTS BREAKDOWN SHEET

### DESCRIPTION

- Two Handle Kitchen Wide-spread Faucet
- Metal Lever Handles
- Spout Swivel 360°
- 8-5/8" Reach, 6-3/16" from Deck to Aerator
- Ceramic Disc Cartridges
- 4-Hole 6" to 16" Installation
- Side Spray Assembly

### FINISHES

- PC PVD Polished Chrome
- BN PVD Brushed Nickel
- SS PVD Stainless Steel
- PN PVD Polished Nickel
- PB PVD Polished Brass
- GR PVD Golden Rose
- ORB Oil Rubbed Bronze
- TB PVD Tuscany Bronze



#2AM201 SHOWN \* ADA 

### STANDARDS APPLICABLE

- ASME A112.18.1
- ANSI A117.1
- ANSI / NSF 61, SECTION 9
- CUPC / IAPMO LISTED / ADA COMPLIANT
- CONTAINS NO MORE THAN 0.25% WEIGHTED AVERAGE LEAD CONTENT

### FLOW

- Aerator Limited to 1.5 GPM

Model #: \_\_\_\_\_

Specific Features: \_\_\_\_\_

Project Name: \_\_\_\_\_

Submitted For: \_\_\_\_\_

Model	Description	Finishes
#2AM201	Two Handle Kitchen Widespread Faucet	<input type="checkbox"/> PC <input type="checkbox"/> Other ____



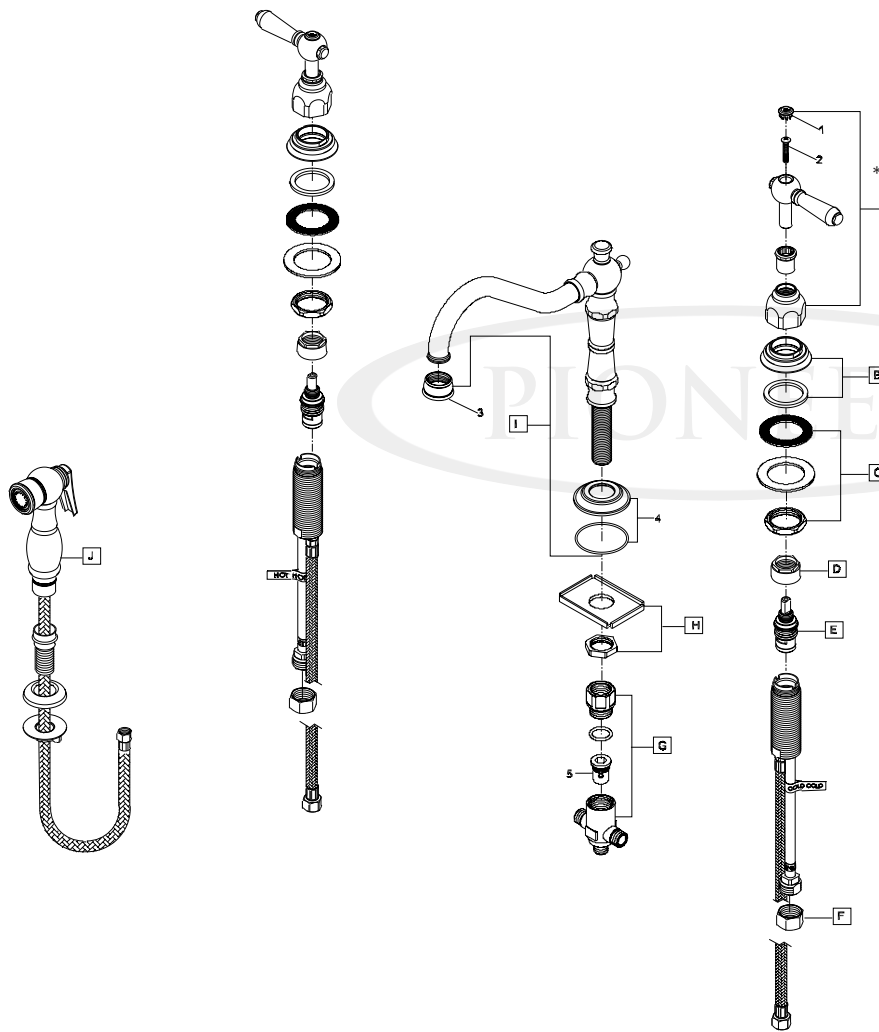
ENGINEERING EXCELLENCE

Pioneer: 1-800-338-9468  
 Commerce, CA 90040  
 www.pioneerind.com  
 Pioneer Industries, Inc. © 2013

DMPB2AM201/REV. 12 2012  
 Page 1 of 2

	ITEM#	DESCRIPTION
A	X-1900007C,H*	Lever Handles-Cold,Hot
B	X-4900034*	Valve Escutcheon
C	X-5900001	Valve Mounting Kit
D	X-4900022	Bonnet Nut
E	X-3900004C,H	Ceramic Cartridge-Cold,Hot
F	X-4900004	Supply Nut
G	X-4200025	Cross Connector
H	X-5200003	Spout Mounting Kit
I	X-2200010*	Americana Spout
J	X-4200059*	Side Spray Assembly
1	X-4900042C,H*	Button-Cold, Hot
2	X-4900035	Handle Screw
3	X-4900091*	1.5 GPM Aerator
4	X-4900032*	Spout Escutcheon
5	X-4200016	Diverter Piston

\* Note- Please specify finish/color code while ordering.



Product Diagram



ENGINEERING EXCELLENCE

Pioneer:1-800-338-9468  
 Commerce, CA 90040  
 www.pioneerind.com  
 Pioneer Industries, Inc. © 2013