



# ENGINEERING EXCELLENCE

Motegi Series #4MT320T

SPECIFICATION SHEET

### DESCRIPTION

- Single Handle Shower Trim Set
- Metal Lever Handles
- Ceramic Disc Cartridge with Temperature Limit Stop
- Single Function 3-3/8" Diameter Showerhead
- Shower Arm and Flange
- Color Match Sleeve and Retaining Ring

### FINISHES

- PC PVD Polished Chrome
- BN PVD Brushed Nickel
- ORB Oil Rubbed Bronze



### STANDARDS APPLICABLE

- ASME A112.18.1
- ANSI A117.1
- CUPC / IAPMO LISTED /ADA COMPLIANT

### FLOW

- Showerhead Limited to 2.5 GPM Flow Rate

#4MT320T SHOWN \* ADA 

Model #: \_\_\_\_\_

Specific Features: \_\_\_\_\_

Project Name: \_\_\_\_\_

Submitted For: \_\_\_\_\_

Model	Description	Finishes
#4MT320T	Single Handle Shower Trim Set	<input type="checkbox"/> PC <input type="checkbox"/> Other ____

Required Valve		
#4020B	Single Handle Tub And Shower Valve Set	<input type="checkbox"/> N/A



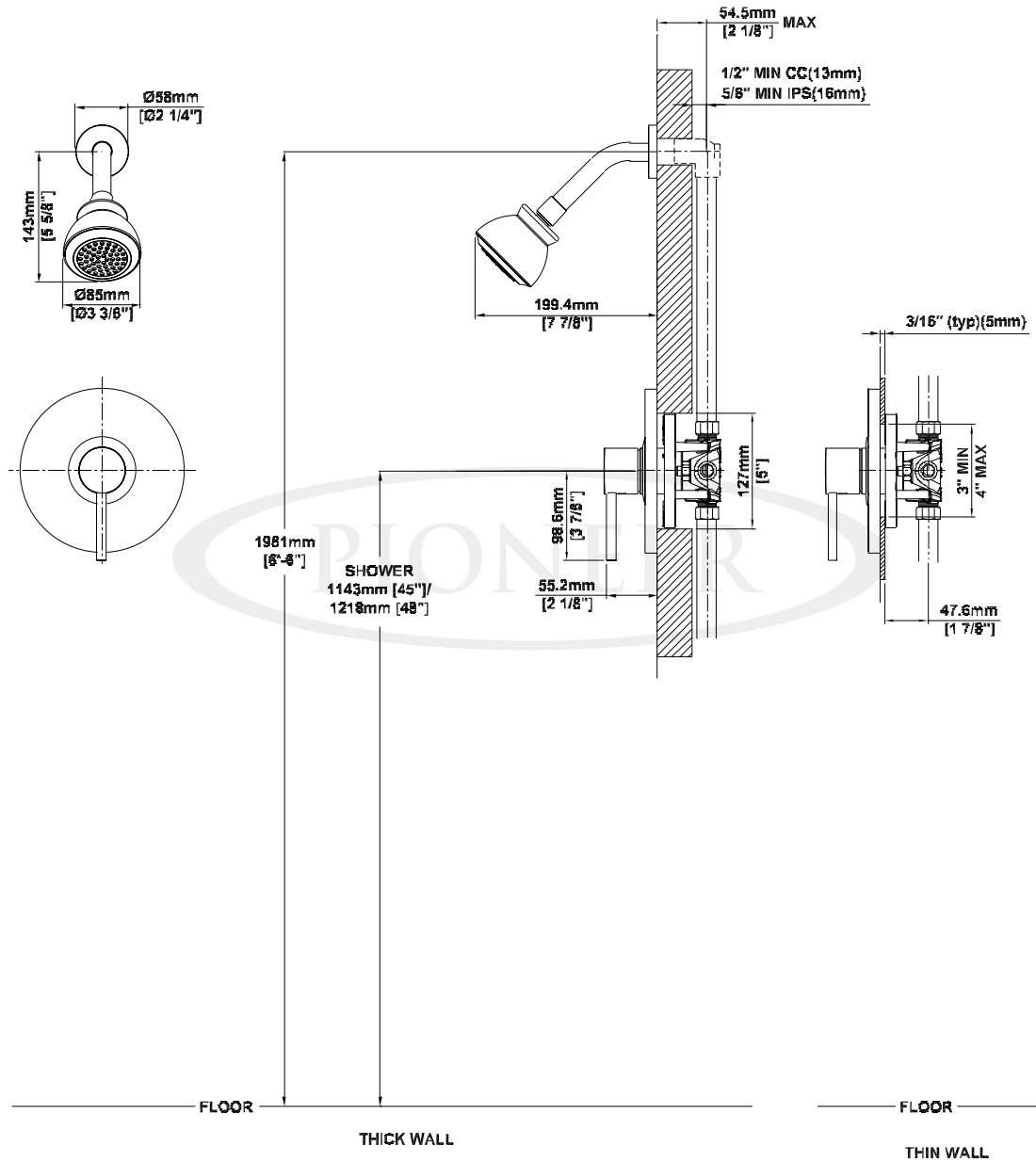
ENGINEERING EXCELLENCE

Pioneer: 1-800-338-9468  
 Commerce, CA 90040  
 www.pioneerind.com  
 Pioneer Industries, Inc. © 2013

DMSP4MT320T/REV. 12 2012  
 Page 1 of 2

**Installation Note:**

Please refer to Installation Guide For this Product. Also Please refer to Installation Guide For the Rough-in Valve. Avoid Cross Flow Connections. Do not install a Shut off valve to any of the outlets. Install a 305 MM [12"] Straight Pipe with single elbow for bath between the rough-in valve and the tub spout.



**Product Diagram**



ENGINEERING EXCELLENCE

Pioneer: 1-800-338-9468  
 Commerce, CA 90040  
 www.pioneerind.com  
 Pioneer Industries, Inc. © 2013