



ENGINEERING EXCELLENCE

Del Mar Series #4DM300TX

SPECIFICATION SHEET

DESCRIPTION

- Single Handle Shower Trim Set
- Metal Lever Handle
- Stainless Steel Pressure Balancing Spool
- Single Function 3-3/8" Standard Showerhead
- Shower Arm and Flange

FINISHES

- PC PVD Polished Chrome
- BN PVD Brushed Nickel
- ORB Oil Rubbed Bronze
- TB PVD Tuscany Bronze

FLOW

- Showerhead Limited to 2.5 gpm



#4DM300TX SHOWN * ADA 

STANDARDS APPLICABLE

- ASME A112.18.1
- CUPC / IAPMO LISTED

Model #: _____

Specific Features: _____

Project Name: _____

Submitted For: _____

Model	Description	Finishes	
#4DM300TX	Single Handle Shower Trim Set	<input type="checkbox"/> PC	<input type="checkbox"/> Other___
Required Valve			
#4010B	Single Handle Tub and Shower-Valve Set Only	<input type="checkbox"/> N/A	
#4011B	Single Handle Tub and Shower-Valve Set Only-Less Inlet Stops	<input type="checkbox"/> N/A	



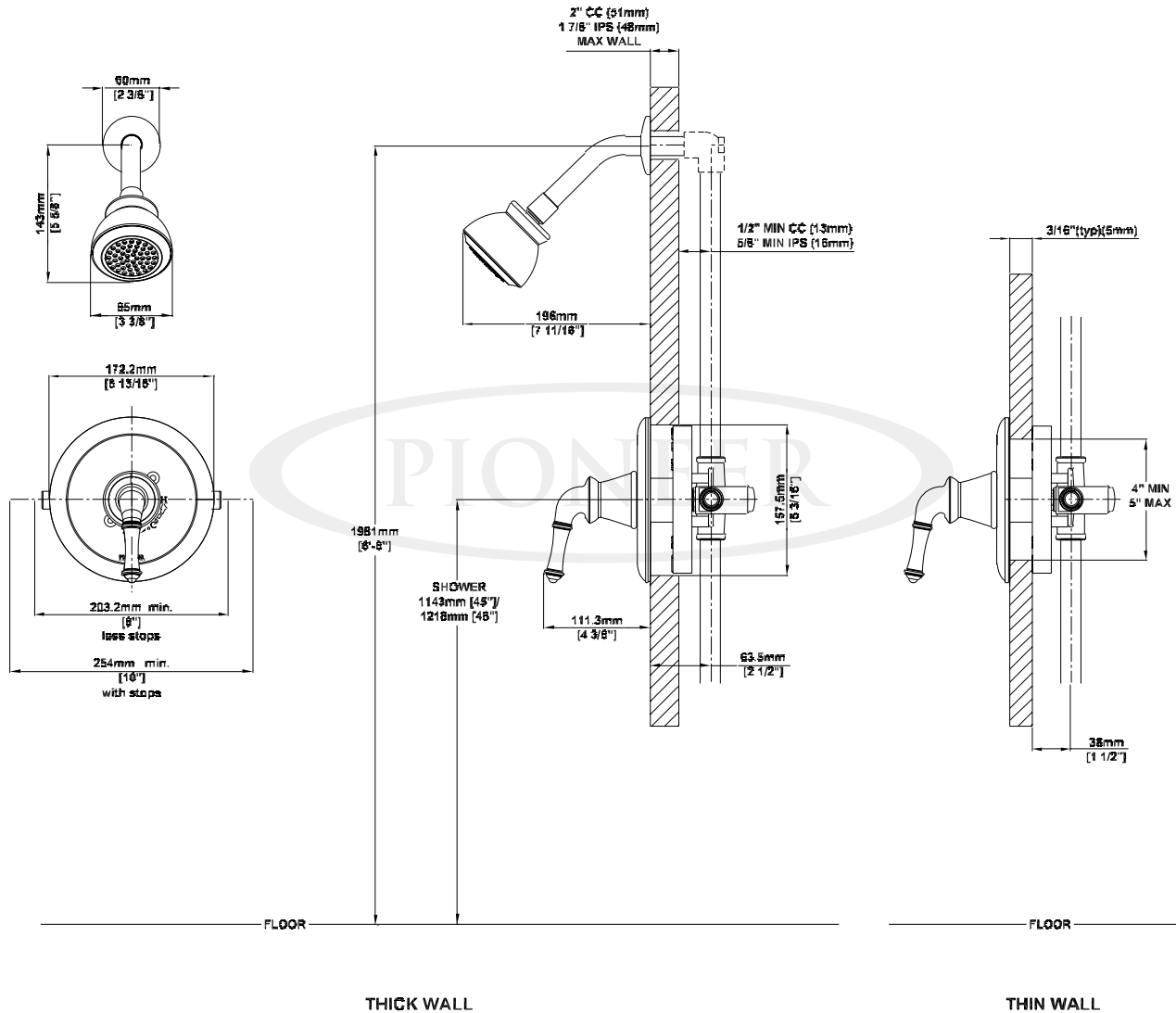
ENGINEERING EXCELLENCE

Pioneer:1-800-338-9468
 Commerce, CA 90040
 www.pioneerind.com
 Pioneer Industries, Inc. © 2013

DMSP4DM300TX/REV. 12 2012
 Page 1 of 2

Installation Note:

Please refer to Installation Guide For this Product. Also Please refer to Installation Guide For the Rough-in Valve. Avoid Cross Flow Connections. Do not install a Shut off valve to any of the outlets. Cap the tub Port for shower only Installation.



Product Diagram



ENGINEERING EXCELLENCE

Pioneer: 1-800-338-9468
 Commerce, CA 90040
 www.pioneerind.com
 Pioneer Industries, Inc. © 2013