



ENGINEERING EXCELLENCE

Del Mar Series #4DM200TX

SPECIFICATION SHEET

DESCRIPTION

- Single Handle Tub Trim Set
- Metal Lever Handle
- Stainless Steel Pressure Balancing Spool
- 1/2" IPS Tub Spout
- Tub Spout Escutcheon

FINISHES

- PC PVD Polished Chrome
- BN PVD Brushed Nickel
- ORB Oil Rubbed Bronze
- TB PVD Tuscany Bronze



#4DM200TX SHOWN * ADA 

STANDARDS APPLICABLE

- ASME A112.18.1
- ANSI A117.1
- CUPC / IAPMO LISTED / ADA COMPLIANT

Model #: _____

Specific Features: _____

Project Name: _____

Submitted For: _____

Model	Description	Finishes
#4DM200TX	Single Handle Tub Trim Set	<input type="checkbox"/> PC <input type="checkbox"/> Other___
Required Valve		
#4010B	Single Handle Tub and Shower-Valve Set Only	<input type="checkbox"/> N/A
#4011B	Single Handle Tub and Shower-Valve Set Only-Less Inlet Stops	<input type="checkbox"/> N/A



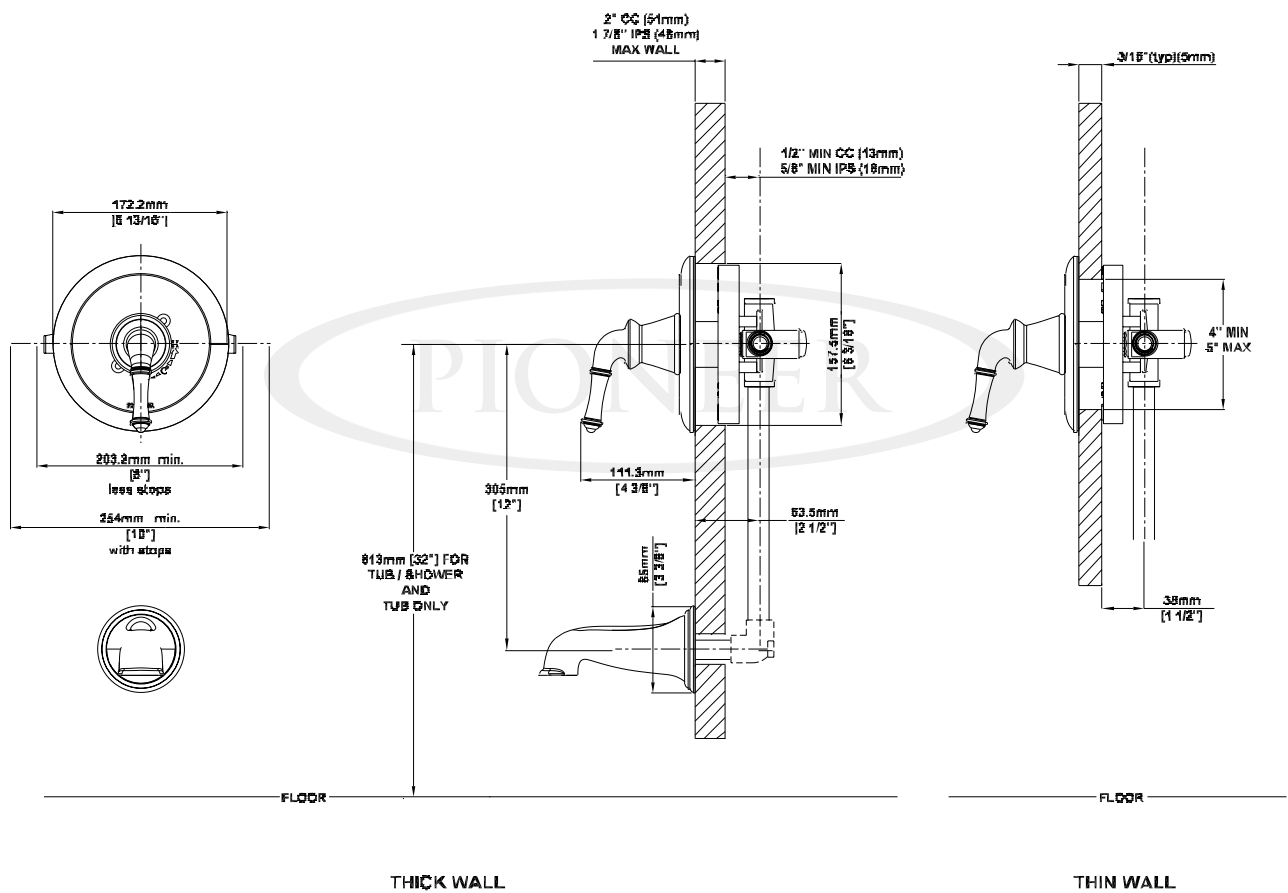
ENGINEERING EXCELLENCE

Pioneer:1-800-338-9468
 Commerce, CA 90040
 www.pioneerind.com
 Pioneer Industries, Inc. © 2013

DMSP4DM200TX/REV. 12 2012
 Page 1 of 2

Installation Note:

Please refer to Installation Guide For this Product. Also Please refer to Installation Guide For the Rough-in Valve. Avoid Cross Flow Connections. Do not install a Shut off valve to any of the outlets. Install a 305 MM [12"] Straight Pipe with single elbow for bath between the rough-in valve and the tub spout. Cap the Shower Port for tub only Installation.



Product Diagram



ENGINEERING EXCELLENCE

Pioneer: 1-800-338-9468
 Commerce, CA 90040
 www.pioneerind.com
 Pioneer Industries, Inc. © 2013

DMSP4DM200TX/REV. 12

2012

Page 2 of 2