



ENGINEERING EXCELLENCE

Installation Guide

Two Handle Roman Tub Valve Set:

- 4300B

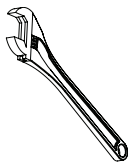
This product meets the following standards:

- ASME A112.18.1
- ANSI A117.1
- CUPC / IAPMO LISTED



Thank you for purchasing this pioneer quality product.

Tools Required



Adjustable
Wrench

Teflon Tape

Rags

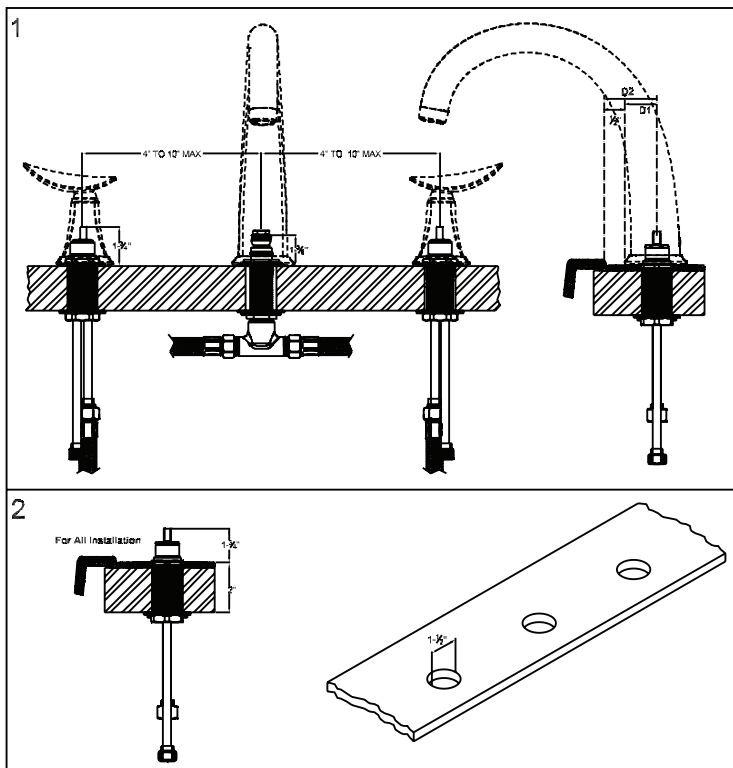
Plumbers
Putty

Prior to Installation

- Observe all local plumbing and building codes before you begin installation.
- Carefully shut off both hot and cold water supplies.
- Plug the tub drain with a soft cloth to prevent intrusion of debris or the loss of any parts.
- Pioneer reserves the right to make changes in the design of faucets without notice.

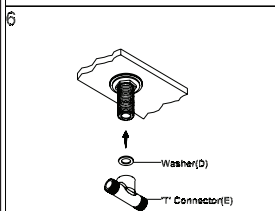
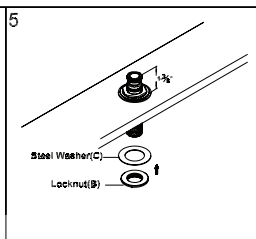
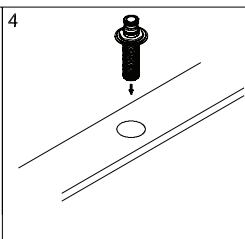
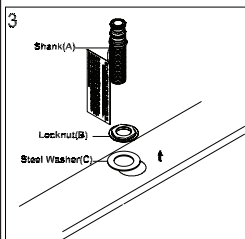
Valve Installation

1. Determine Hole Location :- This valve is designed for 8" to 20" center widespread installation. So decide the Location of the mounting hole within that range. Determine the D1 dimension from the specification sheet for the desired trim set and add minimum 1/2" clearance from the ledge.
2. For All Installation : - Refer to the drawing the required valve height from finished deck is 1-3/4" and maximum deck thickness is 2" and shank height is 1-3/8". Note:- extension kit is available for thicker Deck. Drill three 1-1/2" diameter holes.



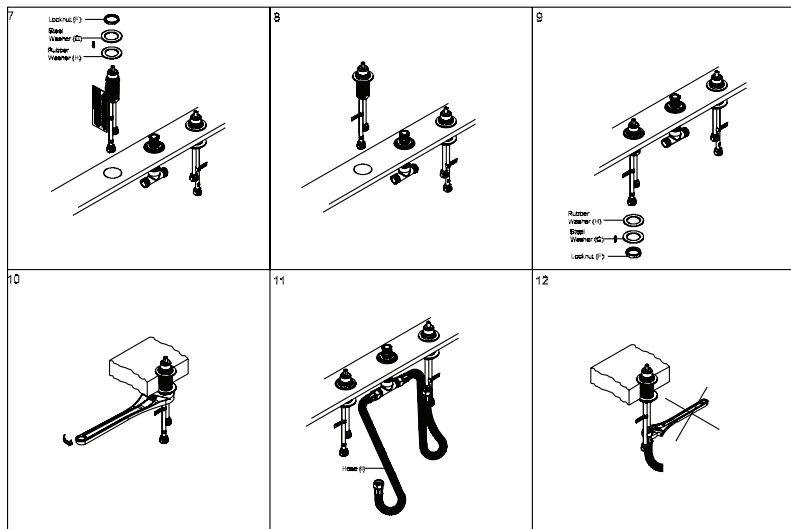
Valve Installation

3. Thread locknut (B) and steel washer (C) on the shank (A) from the bottom of the shank (A).
4. Slide the shank (A) from the spout mounting hole.
5. Check the marking on the shank for finished deck or rim. Adjust the locknut (B) so that the distance between finished surface and top of the shank (A) is 1-3/8". Tighten steel washer (C) and locknut(B) from underneath of the shank(A). Do not overtighten.
6. Install the 'T' connector (E) to beneath of the shank (A). Do not forget to place the washer (D) between the 'T' connector (E) and the shank (A). Tighten the 'T' connector.



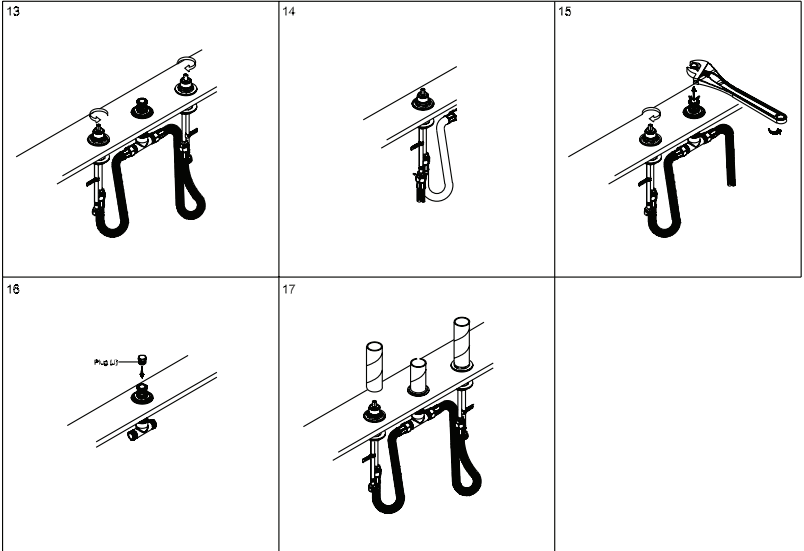
Valve Installation

- Slide the rubber & steel washer (G,H) on the hot side valve from the top. Thread locknut(F) from the top.
- Place the valve from the mounting hole.
- Adjust the locknut (F) so that the distance between finished surface and top of the valve is 1-3/4".
- Tighten rubber and steel washer (G,H) and locknut (F) from underneath with the help of 1-7/16" socket or adjustable wrench. Install Cold side valve as the same way.
- Carefully install the hose (I) to the valve outlets. The other end connect it to 'T' connector (E).
- Do not over tighten the hose with adjustable wrench as it may damage the valve assembly.



Valve Installation

13. Ensure that Hot and cold side stems are turning in correct direction. Connect the valve assembly inlets to water supply tubes (left is hot water supply and right is cold water supply). Do not overtighten the hose with adjustable wrench as it may damage the valve assembly.
14. Turn on the hot and cold water supply. Check for any leaks at all the connections.
15. Remove the test plug. Turn on the both handles make sure there is appropriate amount of water coming from the shank.
16. Turn off the handles. Reinstall the test plug.
17. Install the guards. Install the finished deck material. Remove the guards. Install the faucet trim according to the packed installation instructions.



For more care information or trouble shooting inquiries about your Pioneer Product, please see the contact information on the back page.



ENGINEERING EXCELLENCE

3325 S. Garfield Ave. | Commerce, CA 90040
Telephone: (800) 338-9468 | (323) 888-8873 | Fax: (323) 888-9515
Hours: M - F, 7:30am to 5:00pm PST
www.pioneerind.com