



ENGINEERING EXCELLENCE

#4010B

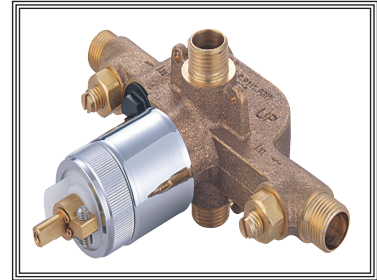
SPECIFICATION SHEET

DESCRIPTION

- Single Handle Tub and Shower Valve Set
- Combo CXC and IPS Inlet and Outlet Connections
- Brass Inlet Stops
- Washerless Cartridge with Adjustable Temperature Limit Stop
- Back to Back Installation
- Wide Internal Waterways

Caution:-

- Stainless Steel Pressure Balancing Spool is Included in Trim Pack Only.



#4010B SHOWN

STANDARDS APPLICABLE

- ASME A112.18.1
- ASSE 1016
- CUPC / IAPMO LISTED

Model #: _____

Specific Features: _____

Project Name: _____

Submitted For: _____

Model	Description	Finishes
#4010B	Single Handle Tub and Shower Valve Set	NA



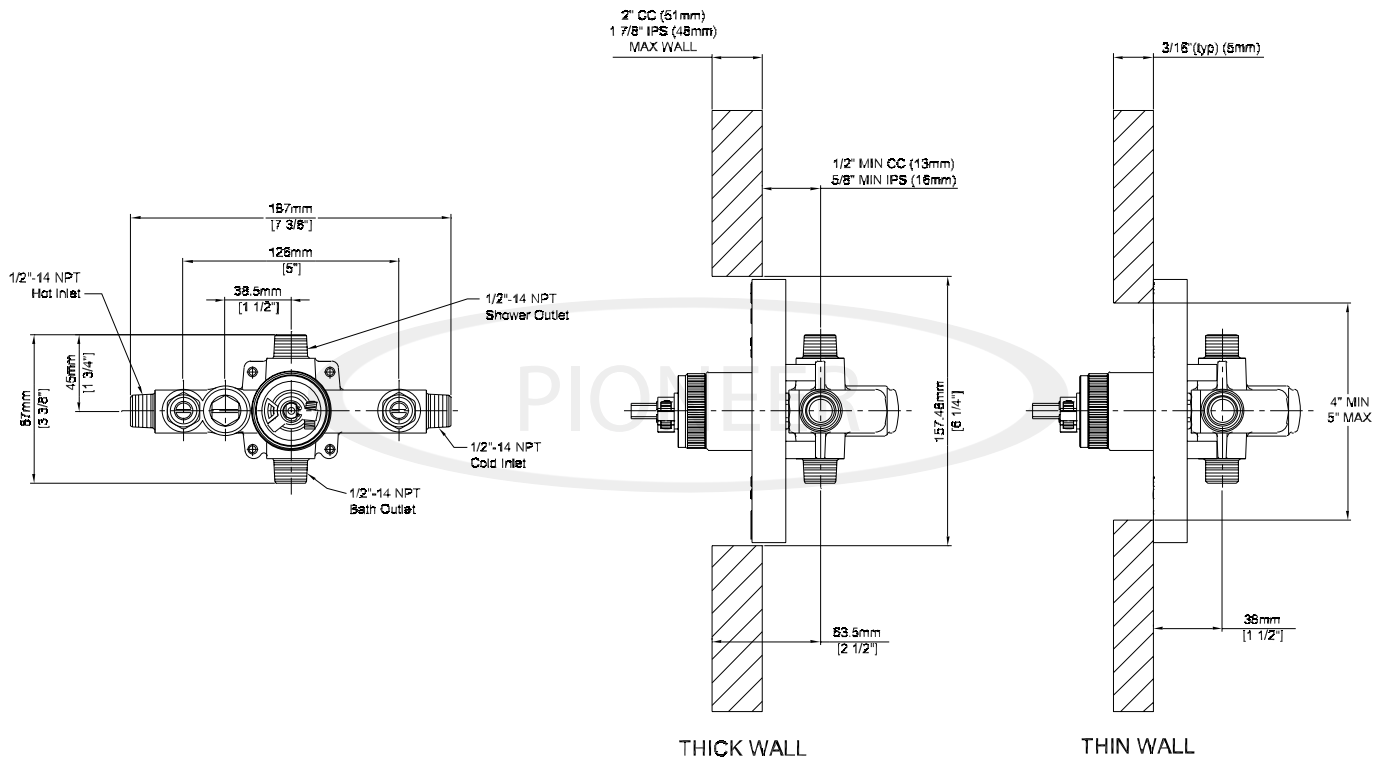
ENGINEERING EXCELLENCE

Pioneer: 1-800-338-9468
 Commerce, CA 90040
 www.pioneerind.com
 Pioneer Industries, Inc. © 2009

DMSP4010B/REV. 12 2009
 Page 1 of 2

Installation Note:

Please refer to Installation Guide For this Product. Also Please refer to Installation Guide For the Rough-in Valve. Avoid Cross Flow Connections. Do not install a Shut off valve to any of the outlets. Install minimum 305 MM [12"] Straight Pipe with single elbow for bath between the rough-in valve and the tub spout. Cap the Tub port or Shower Port For Shower Only or Tub Only Installation.



Product Diagram



ENGINEERING EXCELLENCE

Pioneer: 1-800-338-9468
 Commerce, CA 90040
 www.pioneerind.com
 Pioneer Industries, Inc. © 2009