



ENGINEERING EXCELLENCE

Installation Guide

Single Handle Lavatory Faucet:

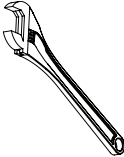



- 3LG160*
- 3LG161*
- 3LG170*
- 3LG180B
- 3LG171*
- 3LG160B*
- 3LG180
- 3LG181
- 3LG170B*
- 3LG161G*
- 3PM160*
- 3LG160H*

This product meets the following standards:

- ASME A112.18.1
- ANSI A117.1
- ANSI / NSF 61, SECTION 9
- CUPC / IAPMO LISTED / ADA COMPLIANT
- CONTAINS NO MORE THAN 0.25% WEIGHTED AVERAGE LEAD CONTENT

Thank you for purchasing this Pioneer quality product.

Tools Required

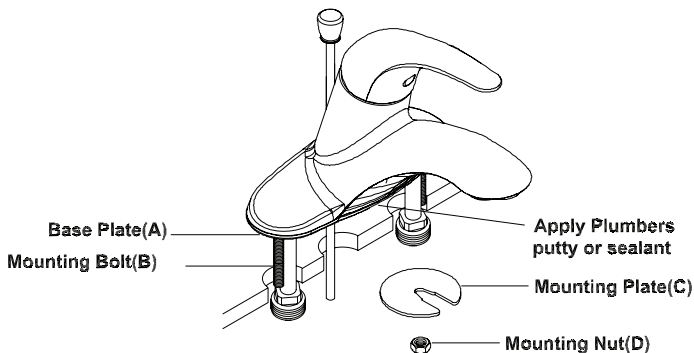
				
Adjustable Wrench	Teflon Tape	Rags	3/32" Allen Wrench	

Prior to Installation

- Observe all local plumbing and building codes before you begin installation.
- Carefully shut off both hot and cold water supplies from under the sink.
- Plug the sink drain with a soft cloth to prevent intrusion of debris or the loss of any faucet parts.
- For replacement installations, carefully remove the existing faucet and clean the entire surface of the sink mounting holes.
- Pioneer reserves the right to make changes in the design of faucets without notice as specified in the pricebook.

Faucet Installation

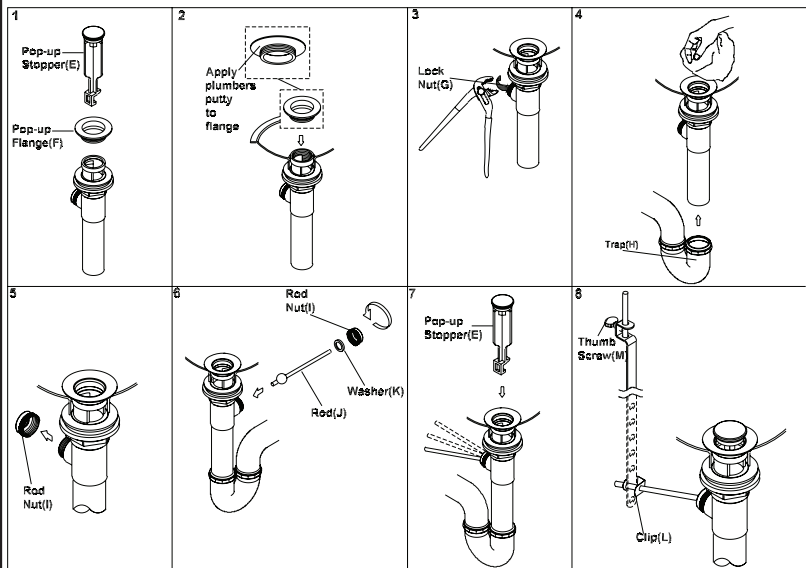
- Slide the base plate (A) to the underside of the faucet.
- Apply adequate plumbers putty or sealant along the boundary of the base plate (A) if necessary.
- Clean the mounting surface If necessary.
- Insert the faucet through sink hole.
- Thread the mounting bolt (B) into the faucet from beneath.
- Slide the mounting plate (C) through the mounting bolt.
- Thread the mounting nut (D) from underside. Secure the faucet to the sink with mounting nut (D) supplied with the faucet.
- Remove the excess plumbers putty or sealant from the faucet.



Pop-up Drain Installation

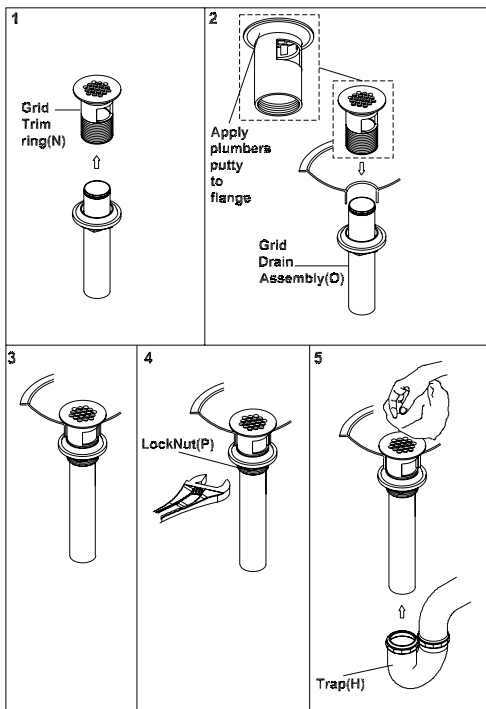
1. Remove the pop-up stopper (E) and pop-up flange (F) from the pop-up assembly.
2. Apply adequate amount of plumbers putty underside of pop-up flange (F). Then insert pop-up drain assembly from underside of the sink and secure the pop-up flange (F) from the top.
3. Rotate the drain body so that horizontal rod hole faces back of the faucet. Hold the pop-up assembly in place and tighten the locknut (G).
4. Remove the excess putty. Connect the trap (H) (check manufacturer's instructions for installation).
5. Remove rod nut (I).
6. Ensure the washers (K) is in place (for brass pop-up only). Insert rod (J). Tighten the rod nut (I).
7. Push rod down to open drain. Insert the pop-up stopper (E) carefully. Test if the pop-up stopper (E) is working properly.
8. Connect pop-up bracket to the rod using clip (L). Tighten the thumb-screw (M) to connect pop-up bracket to pop-up lift rod.

Pop-up Drain Installation



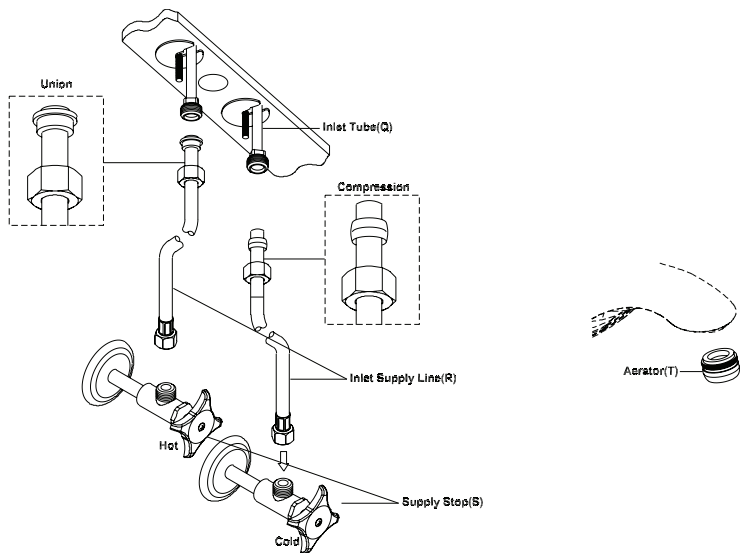
Grid Drain Installation

1. Remove the grid trim ring (N) from the grid drain assembly (O).
2. Apply adequate amount of plumbers putty underside of the grid trim ring (N). Attache the grid trim ring (N) from top of the drain hole. Insert the grid drain assembly (O) from under the lavatory sink.
3. Hold the grid trim ring (N) in place while threading the locknut (P) until the locknut is snug with the underneath the lavatory sink.
4. Tighten the locknut (P).
5. Remove the excess putty. Connect the trap (H) (check manufacturer's instructions for installation).



Main Supply Connection

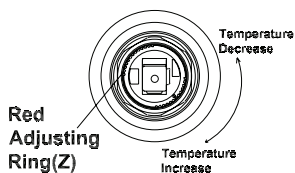
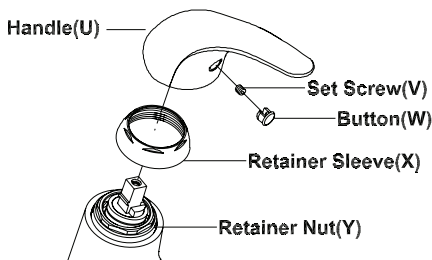
- Connect the faucet inlet tubes (Q) to inlet supply lines (R). Connect the supply stops (S) to the inlet supply lines (R) (left is hot water supply and right is cold water supply). Make sure inlet supply lines (R) are securely tightened. Do not over-tighten.
- Turn on water. Check for any leaks. Make sure all the connections are secure.
- Remove aerator (T).
- Open the handle.
- Flush and allow water to run at full flow for at least one minute.
- Replace aerator (T).



To Set or Adjust Temperature Limit Stop

Caution: Ceramic cartridge is preset at the factory at maximum temperature. Adjust as necessary. Please see the instructions below:

- Turn off water and relieve the pressure.
- Remove handle (U) by removing Button (W) and loosening set screw (V) and lift off the handle (U). **Note:** For 3LG180, 3LG180B and 3LG181- Remove handle (U) by remove button (W) (located on the top of the handle) and loosening Phillips screw.
- Unscrew retainer sleeve (X) and retaining nut (Y).
- Use two fingers to raise the red adjustment ring (Z).
- Turn adjustment ring (Z) counterclockwise to decrease the temperature setting and clockwise to increase the temperature. Replace the adjustment ring (Z).
- Reassemble and test until desired safe temperature is reached. (Note: Ensure proper alignment of cartridge with notch in valve body.)



For more care information or trouble shooting inquiries about your Pioneer Product, please see the contact information on the back page.



ENGINEERING EXCELLENCE

3325 S. Garfield Ave. | Commerce, CA 90040
Telephone: (800) 338-9468 | (323) 888-8873 | Fax: (323) 888-9515
Hours: M - F, 7:30am to 5:00pm PST
www.pioneerind.com