



ENGINEERING EXCELLENCE

Legacy Series #2LG101

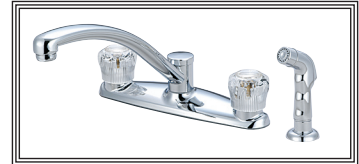
PARTS BREAKDOWN SHEET

DESCRIPTION

- Two Handle Kitchen Faucet
- Acrylic Round Handles
- Spout Swivel 360°
- 9-11/16" Reach, 5-1/4" From Deck to Aerator
- Ceramic Disc Cartridges
- 4-Hole 8" Installation
- Side Spray Assembly

FINISHES

- PC PVD Polished Chrome
- BN PVD Brushed Nickel



#2LG101 SHOWN

STANDARDS APPLICABLE

- ASME A112.18.1
- ANSI / NSF 61, SECTION 9
- CUPC / IAPMO LISTED
- CONTAINS NO MORE THAN 0.25% WEIGHTED AVERAGE LEAD CONTENT

FLOW

- Aerator Limited to 1.5 GPM

Model #: _____

Specific Features: _____

Project Name: _____

Submitted For: _____

Model	Description	Finishes	
#2LG101	Two Handle Kitchen Faucet	<input type="checkbox"/> PC	<input type="checkbox"/> Other__



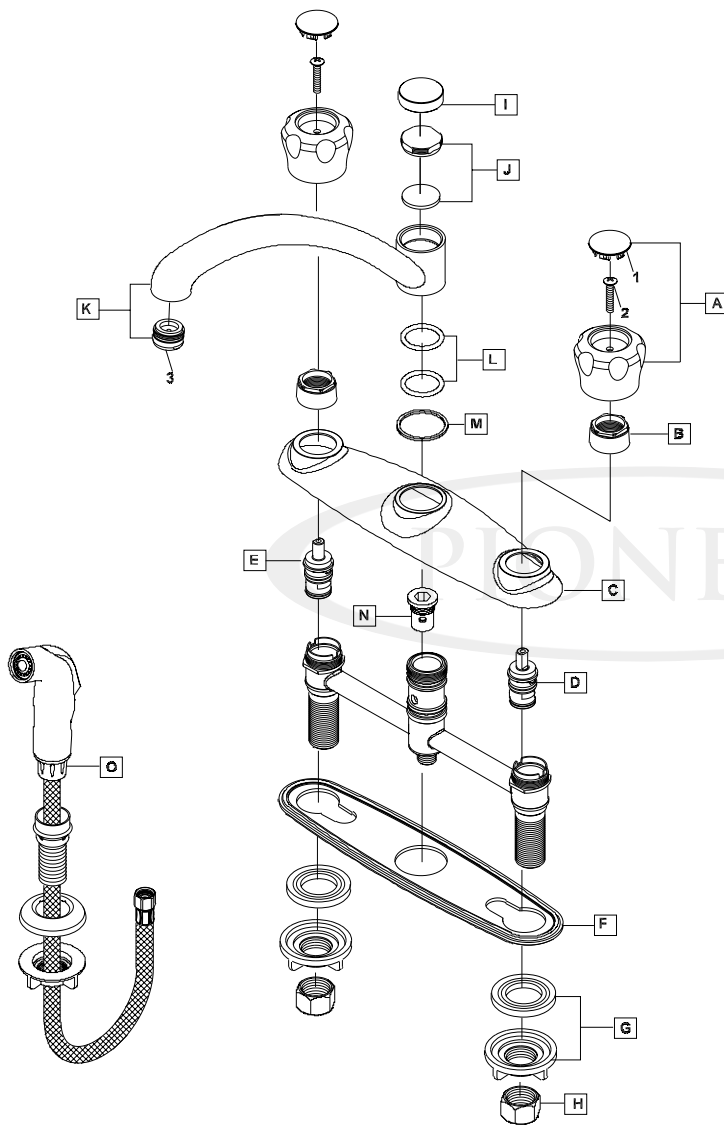
ENGINEERING EXCELLENCE

Pioneer: 1-800-338-9468
 Commerce, CA 90040
 www.pioneerind.com
 Pioneer Industries, Inc. © 2013

DMPB2LG101/REV. 12 2012
 Page 1 of 2

	ITEM#	DESCRIPTION
A	X-1900001C,H	Acrylic Handle-Cold, Hot
B	X-4900007	Bonnet Nut
C	X-4200014*	Deck Plate
D	X-3900002C	Ceramic Stem - Cold
E	X-3900002H	Ceramic Stem - Hot
F	X-4200006	Base Plate
G	X-4900008	Mounting Kit
H	X-4900004	Supply Nut
I	X-4200058*	Cap
J	X-4200011	Retainer Nut & Washer
K	X-2200002*	Legacy Spout
L	X-4200012	Spout O-Ring
M	X-4200013	Spout Gasket
N	X-4200016	Diverter Piston
O	X-4200008*	Side Spray
1	X-4900005C,H	Acrylic Handle Index-Cold, Hot
2	X-4900006	Acrylic Handle Screw
3	X-4900081*	1.5 GPM Aerator

* Note- Please specify finish/color code while ordering.



Product Diagram



ENGINEERING EXCELLENCE

Pioneer:1-800-338-9468
 Commerce, CA 90040
 www.pioneerind.com
 Pioneer Industries, Inc. © 2013