



ENGINEERING EXCELLENCE

Installation Guide

Single Handle Kitchen Faucet:

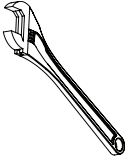



- 2CS330
- 2CS331
- 2MT330
- 2MT331
- 2MT340
- 2MT341

This product meets the following standards:

- ASME A112.18.1
- ANSI A117.1
- ANSI / NSF 61, SECTION 9
- CUPC / IAPMO LISTED / ADA COMPLIANT
- CONTAINS NO MORE THAN 0.25% WEIGHTED AVERAGE LEAD CONTENT

Thank you for purchasing this Pioneer quality product.

Tools Required

				
Adjustable Wrench	Teflon Tape	Rags	3/32" Allen Wrench	

Prior to Installation

- Observe all local plumbing and building codes before you begin installation.
- Carefully shut off both hot and cold water supplies.
- Plug the sink drain with a soft cloth to prevent intrusion of debris or the loss of any parts.
- Pioneer reserves the right to make changes in the design of faucets without notice.

Faucet Installation

- Note:- The escutcheons are supplied with rubber gaskets to form water-tight seal. Do not use rubber gaskets and plumbers putty both to form watertight seal.

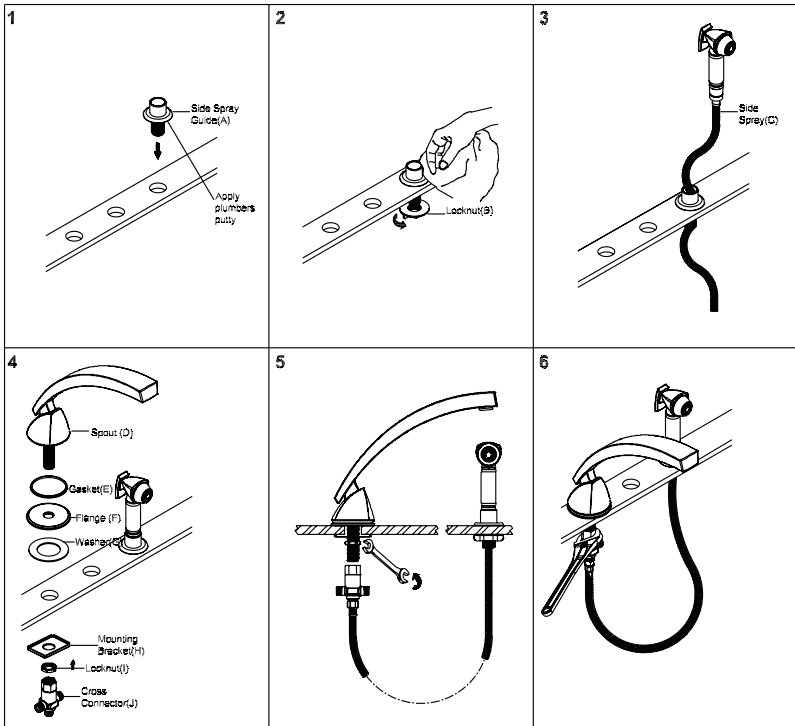
For Faucet With Side Spray Installation

1. Put adequate amount of plumbers putty underneath of the side spray guide(A).
2. Secure the side spray guide(A) to the mounting surface with the help of locknut(B). Remove the excess plumbers putty from the mounting surface.
3. Slide the side spray(C) through side spray guide(A).

For All Installation

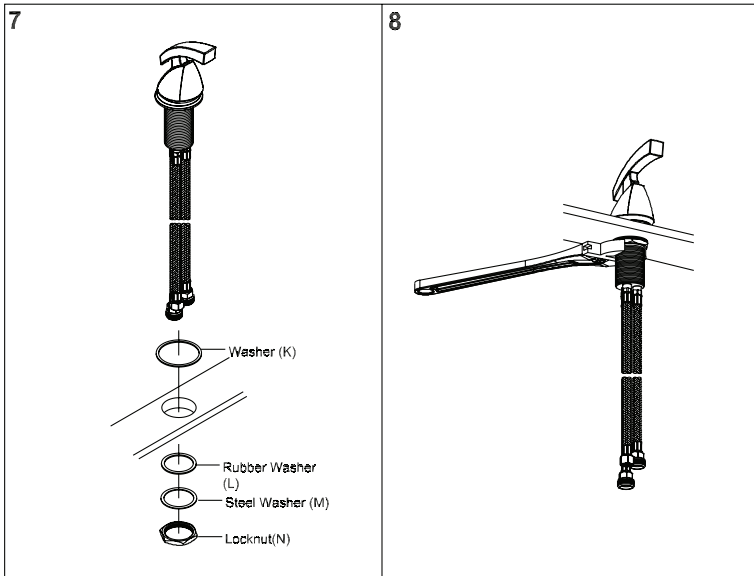
4. Install the spout(D). Ensure the washer(G) is placed underneath of the flange(F) to create water tight seal.
5. Slide the mounting bracket(H) through spout shank from underneath of the sink. Tighten the locknut(I) from underneath.
6. Thread cross connector (For faucet with side spray) or spout adapter (For faucet without side spray)(J) to the spout(D). For faucet with side spray Install the side spray hose(P) to cross connector(J).

Faucet Installation Drawing



Faucet Installation

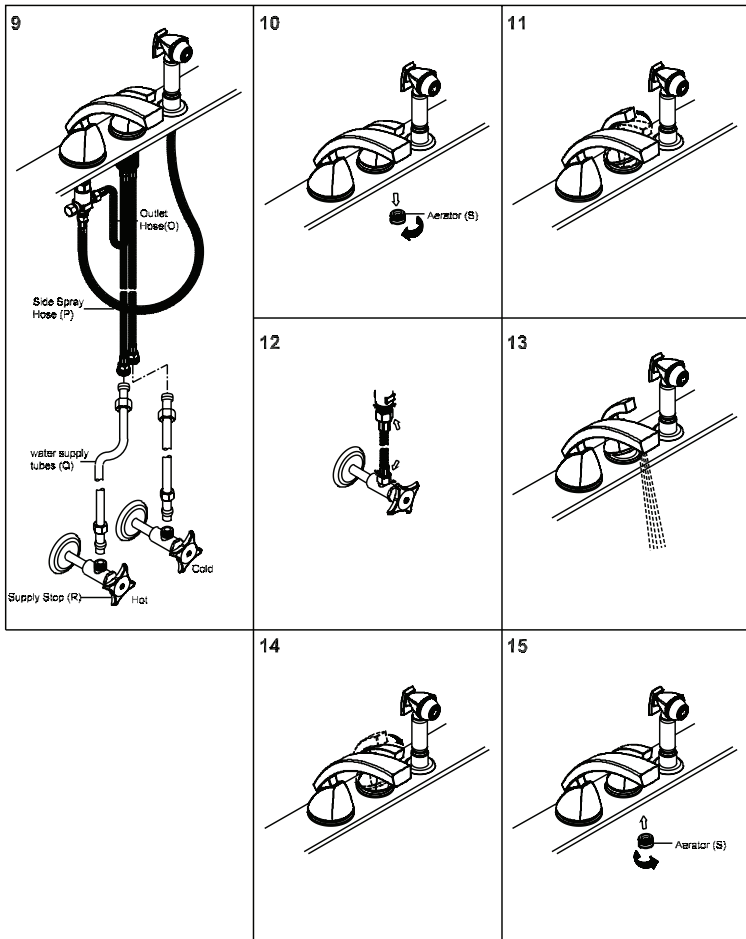
- Slide the valve along with the inlet and outlet hoses through mounting hole. Ensure the washer(K) is placed underneath of the valve.
- Slide the rubber washer(L) and steel washer(M) through the valve shank. Thread the locknut(N) to the valve. Tighten the locknut(N) with the help of adjustable wrench.



Faucet Installation

9. Connect the faucet inlet hoses to the water supply tubes(Q) (left is hot water supply and right is cold water supply). Make sure supply tubes(Q) are securely tighten. Connect outlet tubes(Q) from the valve to cross connector or spout adapter. Do not overtighten.
10. Remove the aerator(S) from the spout by turning counterclockwise.
11. Turn on supply stops(R).
12. Check of any leaks. Make sure all the connections are secure.
13. Turn on water. Flush and allow water to run at full flow for at least one minute.
14. Turn off water.
15. Replace aerator(S). For faucet with side spray. Check if water diverts fully from spout to side spray and from side spray to spout.

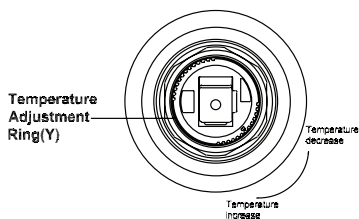
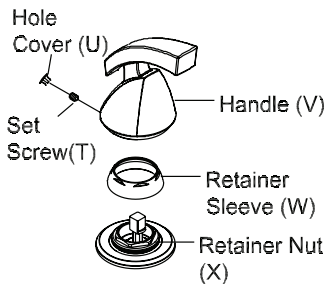
Faucet Installation Drawing



To Set or Adjust Temperature Limit Stop

Caution: Valve is preset at the factory test at maximum. Adjust as necessary. Please see the instructions below:

- Turn off supply stops(R) and relieve the pressure.
- Remove handle(V) by removing set screw hole cover(U) and loosening set screw(T) lift off the handle.
- Unscrew retainer sleeve(W) and retainer nut(X) counterclockwise.
- Use two fingers to raise the red adjustment ring(Y).
- Turn adjustment ring counterclockwise to decrease the temperature setting and clockwise to increase the temperature. Replace the adjustment ring.
- Reassemble and test until desired safe temperature is reached. (Note: Ensure proper alignment of cartridge with notch in valve body.)



For more care information or trouble shooting inquiries about your Pioneer Product, please see the contact information on the back page.



ENGINEERING EXCELLENCE

3325 S. Garfield Ave. | Commerce, CA 90040
Telephone: (800) 338-9468 | (323) 888-8873 | Fax: (323) 888-9515
Hours: M - F, 7:30am to 5:00pm PST
www.pioneerind.com