



ENGINEERING EXCELLENCE

Installation Guide

Two Handle Kitchen Widespread Faucet:

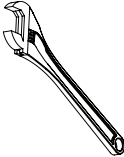



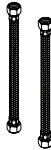
- 2CS200
- 2CS201

This product meets the following standards:

- ASME A112.18.1
- ANSI A117.1
- ANSI / NSF 61, SECTION 9
- CUPC / IAPMO LISTED / ADA COMPLIANT
- CONTAINS NO MORE THAN 0.25% WEIGHTED AVERAGE LEAD CONTENT

Thank you for purchasing this Pioneer quality product.

Tools Required

				
Adjustable Wrench	Teflon Tape	Rags	3/32" Allen Wrench	Flex Hose

Prior to Installation

- Observe all local plumbing and building codes before you begin installation.
- Carefully shut off both hot and cold water supplies.
- Plug the sink drain with a soft cloth to prevent intrusion of debris or the loss of any parts.
- Pioneer reserves the right to make changes in the design of faucets without notice.

Faucet Installation

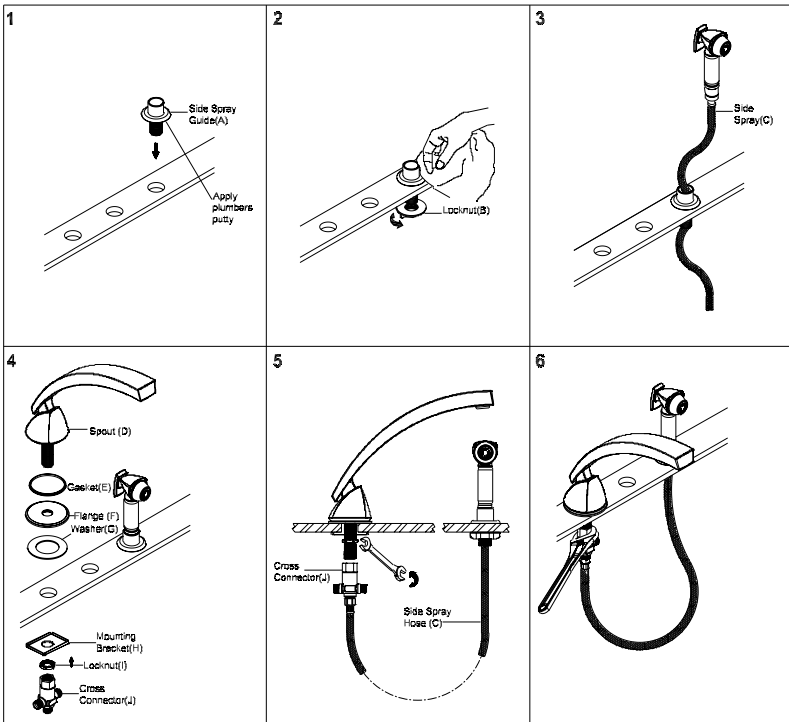
For 2CS201 Installation

1. Put adequate amount of plumbers putty underneath of the side spray guide(A).
2. Secure the side spray guide(A) to the mounting surface with the help of locknut(B). Remove the excess plumbers putty from the mounting surface.
3. Slide the side spray(C) through side spray guide(A).

For All Installation

4. Install the spout(D). Ensure the washer(G) is placed underneath of the flange(F) to create water tight seal.
5. Slide the mounting bracket(H) through spout shank from underneath of the sink. Tighten the locknut(I) from underneath.
6. Thread cross connector (For 2CS201) or Y connector (For 2CS200)(J) to the spout(D). For 2CS201 Install the side spray hose(C) to cross connector(J).

Faucet Installation Drawing

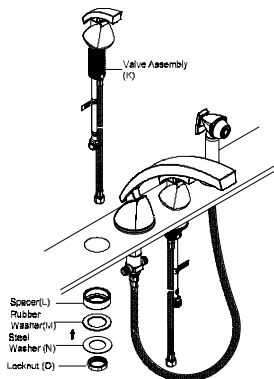


Faucet Installation

7. Place the cold side valve assembly(K) on right hand side and hot side valve assembly on the left hand side of the spout(D). Apply adequate amount of plumbers putty or sealant underneath of the valve assembly (K) for watertight seal.
8. Slide the spacer (L) if needed, then slide the rubber washer(M), steel washer(N). Tighten the locknut (O) with the help of 1-11/32" size socket or adjustable wrench. Ensure the handle is aligned properly.
9. Install the hot side valve(K) in the same way.
10. Carefully hand tighten the hose(P) to cross connector (For 2CS201) or Y connector (For 2CS200). Connect the valve assembly(K) inlets to water supply tubes (left is hot water supply and right is cold water supply). Do not overtighten the supply tubes with adjustable wrench as it may damage the valve assembly(K).

Faucet Installation Drawing

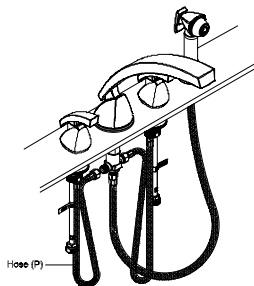
7



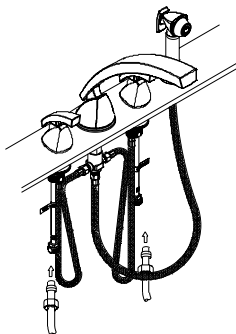
8



9

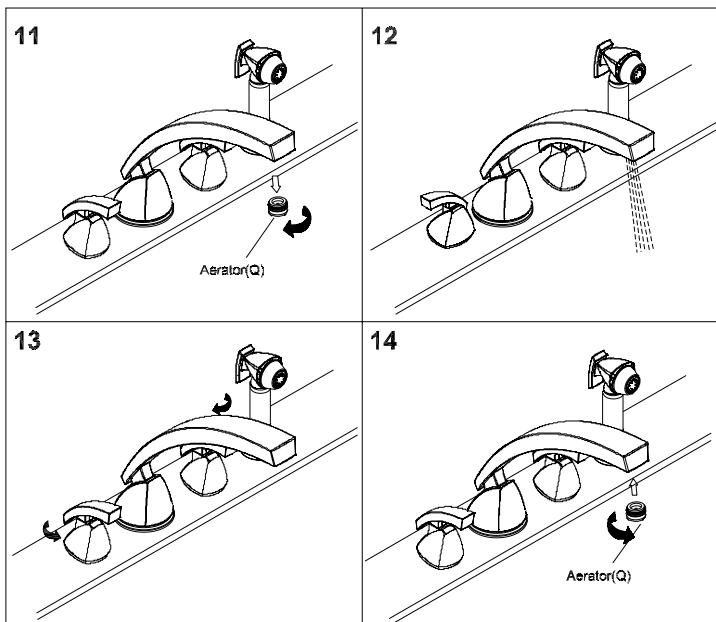


10



Faucet Installation

11. Turn on water. Remove aerator(Q).
12. Open the handles.
13. Check for any leaks. Make sure all the connection are secure. Flush and allow water to run at full flow for at least one minute. For 2CS201 check the water divert from spout to side spray is functioning well.
14. Close the handles.
15. Replace aerator(Q).



For more care information or trouble shooting inquiries about your Pioneer Product, please see the contact information on the back page.



ENGINEERING EXCELLENCE

3325 S. Garfield Ave. | Commerce, CA 90040
Telephone: (800) 338-9468 | (323) 888-8873 | Fax: (323) 888-9515
Hours: M - F, 7:30am to 5:00pm PST
www.pioneerind.com