



ENGINEERING EXCELLENCE

Installation Guide

Single Handle Kitchen Faucet:

- 2CL330
- 2CL331

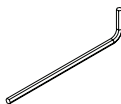
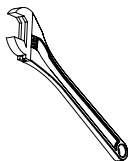
This product meets the following standards:

- ASME A112.18.1
- ANSI A117.1
- ANSI / NSF 61, SECTION 9
- CUPC / IAPMO LISTED / ADA COMPLIANT
- CONTAINS NO MORE THAN 0.25% WEIGHTED AVERAGE LEAD CONTENT



Thank you for purchasing this Pioneer quality product.

Tools Required



Adjustable
Wrench

Teflon Tape

Rags

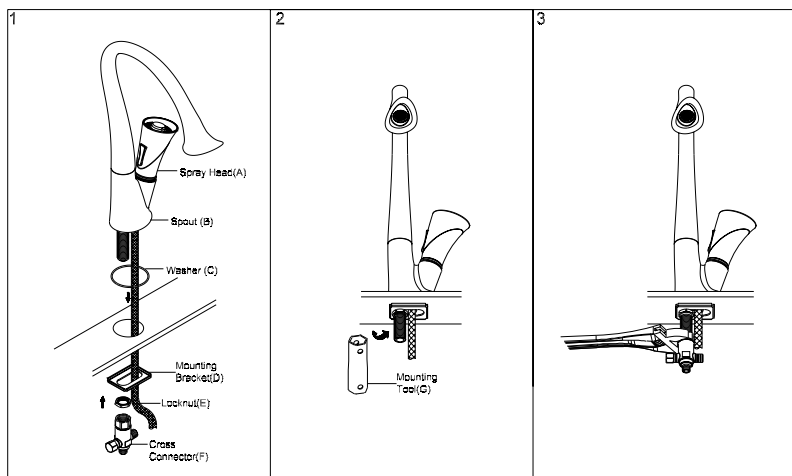
3/32" Allen
Wrench

Prior to Installation

- Observe all local plumbing and building codes before you begin installation.
- Carefully shut off both hot and cold water supplies.
- Plug the sink drain with a soft cloth to prevent intrusion of debris or the loss of any parts.
- Pioneer reserves the right to make changes in the design of faucets without notice.

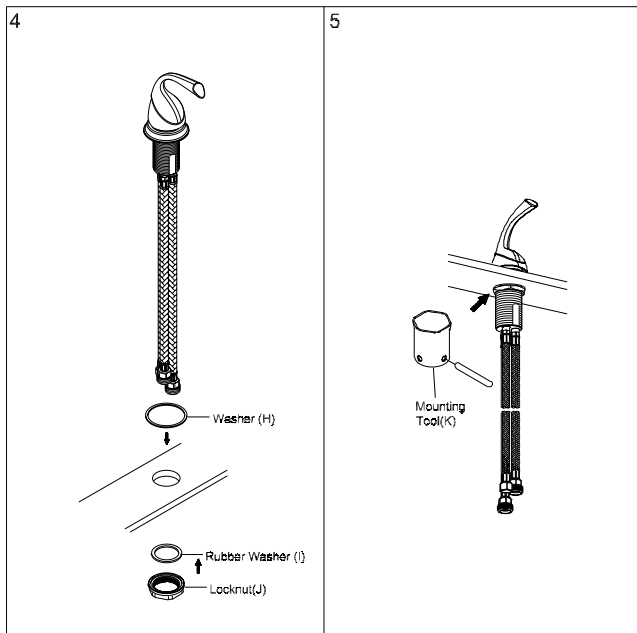
Faucet Installation

- Note:- The spout is supplied with rubber washer to form watertight seal. Do not use rubber washer and plumbers putty both to form watertight seal.
1. Install the spout(B). Ensure the washer (C) is placed underneath of the spout (B) to create watertight seal.
For faucets with side spray:- Ensure the spray head (A) is inserted through spray head hole.
 2. Slide the mounting bracket (D) through spout shank from underneath of the sink. Use supplied mounting tool (G) to tighten the locknut (E) from underneath. Do not overtighten.
 3. Thread cross connector (F) to the spout shank. Ensure the washer is in the cross connector (F) before installing.



Faucet Installation

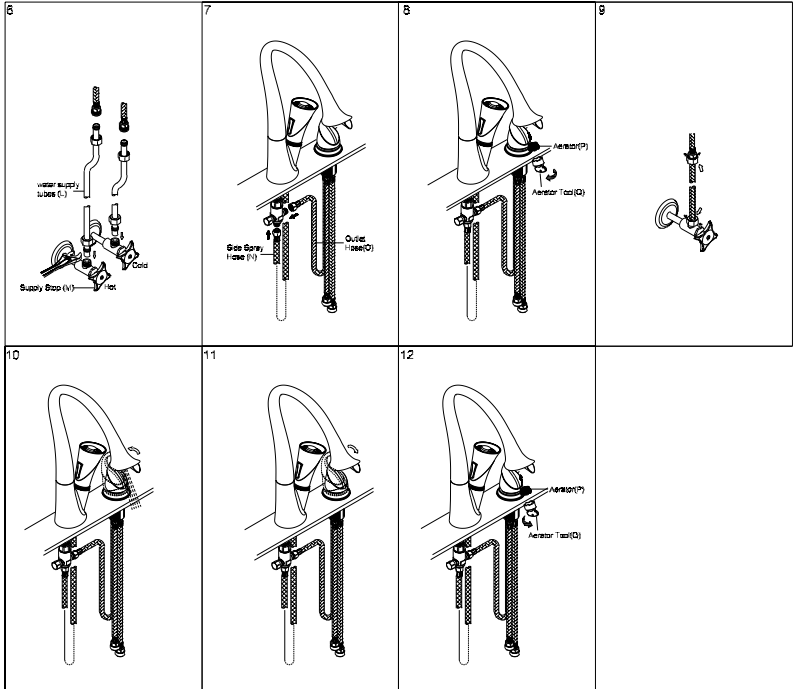
- Slide the valve along with the inlet and outlet hoses through mounting hole. Ensure the washer (H) is placed underneath of the valve.
- Slide the rubber washer (I) through the valve shank. Thread the locknut (J) to the valve. Tighten the locknut (J) with the help of supplied mounting tool (K).



Faucet Installation

6. Connect the faucet inlet hoses to the water supply tubes (L) (left is hot water supply and right is cold water supply). Make sure supply tubes (L) are securely tighten. Connect water supply tubes (L) to supply stops (M).
7. Connect outlet hose (O) from the valve to cross connector (F). Do not overtighten. Connect side spray hose (N) to cross connector (F). Do not overtighten.
8. Remove the aerator (P) from the spout by turning counterclockwise with the help of supplied aerator tool (Q).
9. Turn on supply stops (M). Check of any leaks. Make sure all the connections are secure.
10. Turn on water. Flush and allow water to run at full flow for at least one minute.
11. Turn off water.
12. Replace aerator (P). For 2CL331 check if water diverts fully from spout to side spray and from side spray to spout.

Faucet Installation



For more care information or trouble shooting inquiries about your Pioneer Product, please see the contact information on the back page.



ENGINEERING EXCELLENCE

3325 S. Garfield Ave. | Commerce, CA 90040
Telephone: (800) 338-9468 | (323) 888-8873 | Fax: (323) 888-9515
Hours: M - F, 7:30am to 5:00pm PST
www.pioneerind.com