



ENGINEERING EXCELLENCE

Americana Series #2AM501

PARTS BREAKDOWN SHEET

DESCRIPTION

- Two Handle Kitchen Bridge Faucet
- Metal Lever Handles
- Spout Swivel 360°
- 8-11/16" Reach, 9-7/16" from Deck to Aerator
- Ceramic Disc Cartridges
- 4-Hole 8" Installation
- Side Spray Assembly

FINISHES

- PC PVD Polished Chrome
- BN PVD Brushed Nickel
- SS PVD Stainless Steel
- PN PVD Polished Nickel
- PB PVD Polished Brass
- GR PVD Golden Rose
- ORB Oil Rubbed Bronze
- TB PVD Tuscany Bronze



#2AM501 SHOWN * ADA 

STANDARDS APPLICABLE

- ASME A112.18.1
- ANSI A117.1
- ANSI / NSF 61, SECTION 9
- CUPC / IAPMO LISTED / ADA COMPLIANT
- CONTAINS NO MORE THAN 0.25% WEIGHTED AVERAGE LEAD CONTENT

FLOW

- Aerator Limited to 1.5 GPM

Model #: _____

Specific Features: _____

Project Name: _____

Submitted For: _____

Model	Description	Finishes
#2AM501	Two Handle Kitchen Bridge Faucet	<input type="checkbox"/> PC <input type="checkbox"/> Other ____



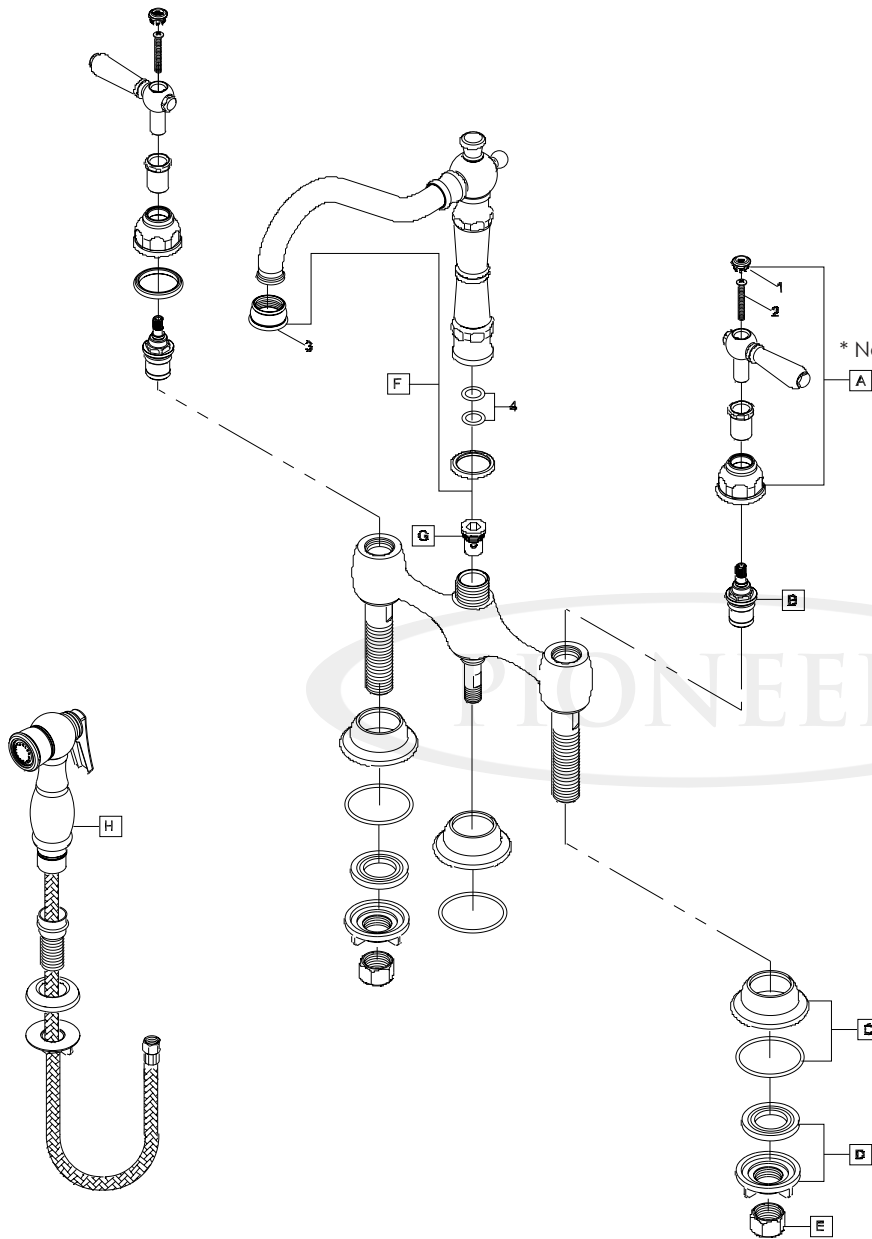
ENGINEERING EXCELLENCE

Pioneer: 1-800-338-9468
 Commerce, CA 90040
 www.pioneerind.com
 Pioneer Industries, Inc. © 2013

DMPB2AM501/REV. 12 2012
 Page 1 of 2

	ITEM#	DESCRIPTION
A	X-1200008C,H*	Lever Handle-Cold,Hot
B	X-3200004C,H	Ceramic Cartridge-Cold,Hot
C	X-4200063*	Flange
D	X-4900008	Mounting Kit
E	X-4900004	Supply Nut
F	X-2200013*	Americana Spout
G	X-4200016	Diverter Piston
H	X-4200059*	Side Spray Assembly
1	X-4900042C,H*	Button-Cold, Hot
2	X-4900035	Handle Screw
3	X-4900091*	1.5 GPM Aerator
4	X-4900012	Spout O-Rings

* Note- Please specify finish/color code while ordering.



Product Diagram



ENGINEERING EXCELLENCE

Pioneer: 1-800-338-9468
 Commerce, CA 90040
 www.pioneerind.com
 Pioneer Industries, Inc. © 2013