



ENGINEERING EXCELLENCE

Installation Guide

Two Handle Kitchen Faucet:

- 2AM400
- 2AM401

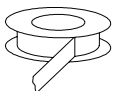
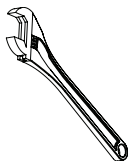
This product meets the following standards:

- ASME A112.18.1
- ANSI A117.1
- ANSI / NSF 61, SECTION 9
- CUPC / IAPMO LISTED / ADA COMPLIANT
- CONTAINS NO MORE THAN 0.25% WEIGHTED AVERAGE LEAD CONTENT



Thank you for purchasing this Pioneer quality product.

Tools Required



Adjustable
Wrench

Teflon Tape

Rags

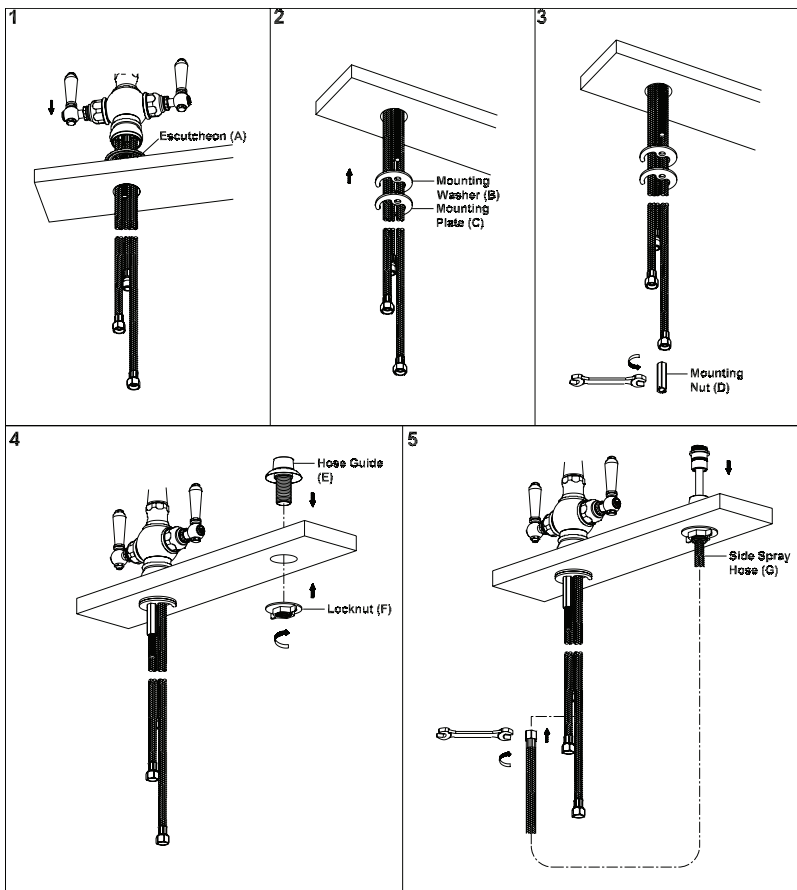
Prior to Installation

- Observe all local plumbing and building codes before you begin installation.
- Carefully shut off both hot and cold water supplies.
- Plug the sink drain with a soft cloth to prevent intrusion of debris or the loss of any parts.
- Pioneer reserves the right to make changes in the design of faucets without notice.

Faucet Installation

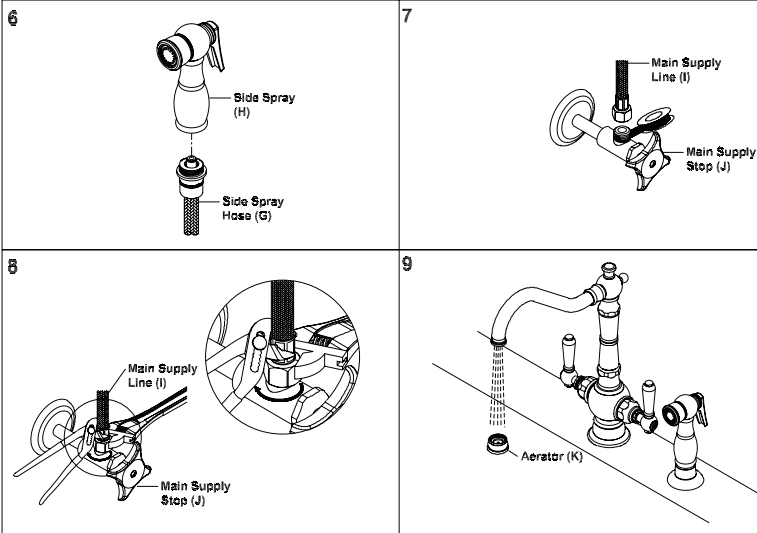
- Note:- The faucet escutcheon (A) is supplied with rubber gasket to form watertight seal. Do not use rubber gasket and plumbers putty both to form watertight seal.
1. Place escutcheon (A) underneath of the faucet. Ensure to put rubber gasket underneath of the escutcheon (A). Slide inlet flex hoses through mounting hole.
 2. Slide mounting washer (B) and mounting plate (C) through mounting bolt.
 3. Thread mounting nut(D) to the mounting bolt. Do not overtighten.
 4. Apply plumbers putty underneath of the hose guide(E). Place the hose guide(E) through mounting hole.
 5. Thread the locknut(F) to the hose guide(E). Do not overtighten. Lead the side spray hose(G) through hose guide (E). Connect side spray hose (G) to the spray port from underneath of the sink.

Faucet Installation Drawing



Faucet Installation

6. Thread the side spray(H) to side spray hose(G).
7. Apply teflon tape to outlet of supply stop(J).
8. Use main supply line(I) to connect the main supply stop(J) (left is hot water supplies and right is cold water supplies). Do not over tighten.
9. Remove the aerator(K) from the spout by turning counterclockwise. Turn on main supply stops. Check of any leaks. Make sure all the connection are secure. Open both hot and cold handles. Flush and allow water to run at full flow for at least one minute. Turn off water. Replace aerator(K).



For more care information or trouble shooting inquiries about your Pioneer Product, please see the contact information on the back page.



ENGINEERING EXCELLENCE

3325 S. Garfield Ave. | Commerce, CA 90040
Telephone: (800) 338-9468 | (323) 888-8873 | Fax: (323) 888-9515
Hours: M - F, 7:30am to 5:00pm PST
www.pioneerind.com