

INSTALLATION



Model Number:
VP-866

TOOLS:



Philips Screwdriver



Pliers



Plumber's Putty



Adjustable Wrench



Pipe Tape

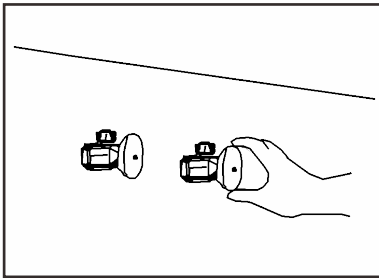


Hex Wrench

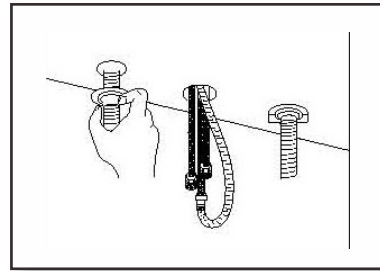
CLEANING:

To maintain and protect the fine luster of all products, clean with a soft, damp cloth only. DO NOT USE detergents or cleansers as they may harm the protective finish.

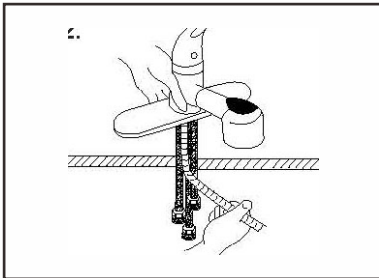
INSTALLATION STEPS:



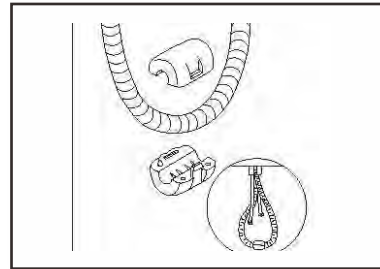
1. Close hot and cold water supplies located under sink cabinet.



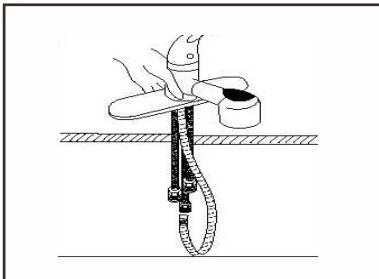
5. Install the faucet onto your sink by placing the flexible water supply lines through the center hole, aligning the stud bolts through the side holes. From under the sinks, thread the plastic nuts onto the stud bolts. Hand tighten snug.



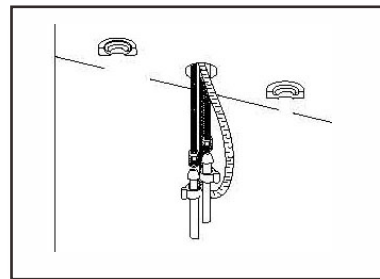
2. Insert pull-out spout into faucet body before mounting faucet onto sink.



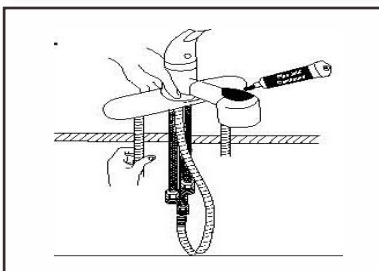
6. Assemble the lead weights to hose to just above the floor line so the hose automatically retracts.



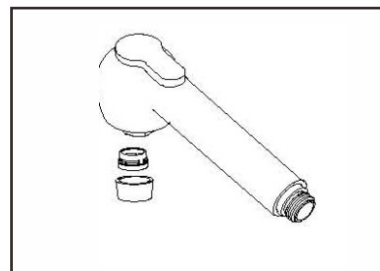
3. Drop the threaded end of the spray hose down through the holder and up through the center faucet mounting hole. Connect the hose to the center of the faucet body. Tighten with a wrench. Do not over-tighten.



7. Connect supply lines. Connect the existing water supply lines to the faucet supply lines.



4. Thread stud bolt under each side of the faucet. Using a screwdriver if required. Apply tub & tile caulk to the entire bottom edge of the plastic gasket over the stud bolts and flexible water supply lines, putting side down.



8. Turn on water supply and check for leaks. Flush faucet thoroughly to remove any particles in the water lines of faucet. To do this, remove aerator and run hot and cold water through faucet. Replace and tighten aerator.

Maintenance: Your new faucet is designed for years of trouble-free performance. Keep it looking new by cleaning it periodically with a soft cloth. Avoid abrasive cleaners, steel wool and harsh chemicals as these will dull the finish and void your warranty.

Please call our Customer Service toll free line at 1-888-796-0605 for additional assistance or service