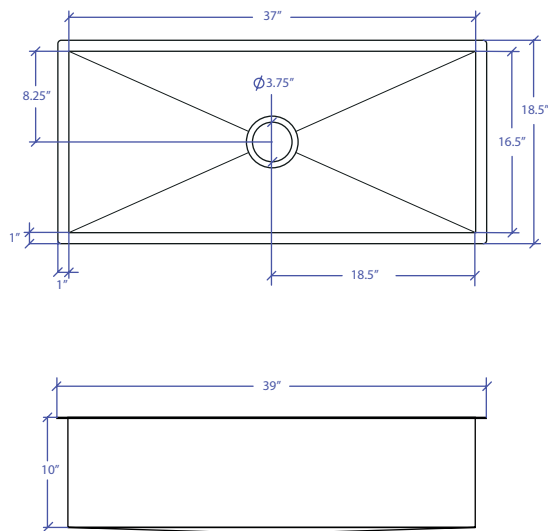


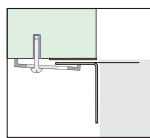
WORKSTATION MUWS-637SB



INDUSTRY'S ONLY STAINLESS STEEL SINK DESIGNED SPECIFICALLY TO BE FLUSH-MOUNTED

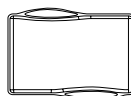


- FEATURES**
 16-gauge type 304 stainless steel
 5-gauge 304 stainless steel rim
- TECHNICAL INFORMATION**
 External dimension: 39" Lx18.5" Wx10" D
 Basin dimensions: 37" Lx16.5" Wx10" D
 Rim width: 1"
 Rim thickness: 1/4"
 Rim Corner: 1/4" round
- FINISHES**
 Satin Brushed stainless steel
- INSTALLATION OPTIONS**
 Under-mount
- MINIMUM CABINET SIZE (I.D.)**
 Under-mount 41"
- INSTALLATION TYPE**



Under-mount

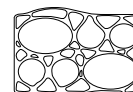
INCLUDED ACCESSORIES



MWCB-651BB
Cutting Board



MWSM-651SB
Salad Mixer

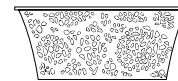


MWBM-651SB
Bain Marie

OPTIONAL ACCESSORIES



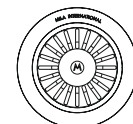
MBG-6519SB
Basin Grid



MWC-651SB
Colander



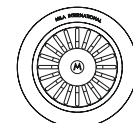
MWSS-651SB
Side Sink



MKD-101SB
Strainer



MDC-101SB
Disposal Collar



MDC-102SB
Disposal Collar

US Patent No. 9,988,799 CA Patent No. 2579506
International Patent Pending

PROJECT INFORMATION			
Project			
Date	/ /	QTY	
Specifier			
Contact			
Note			