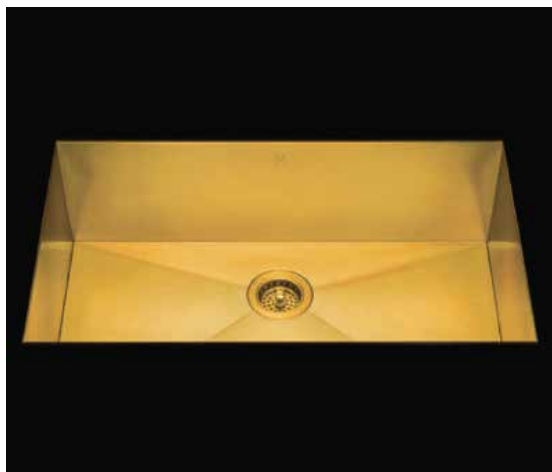
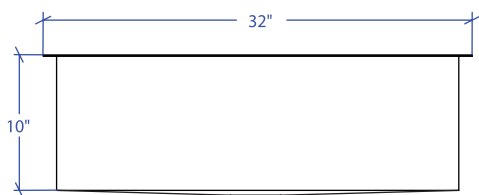
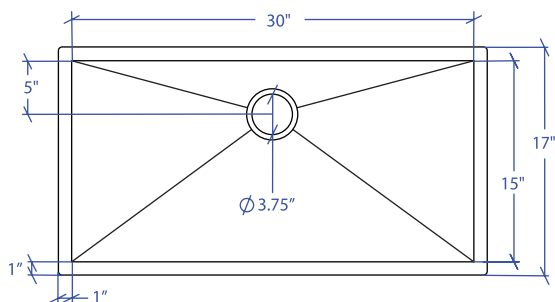


# FLATIRON MUS-504GDSB

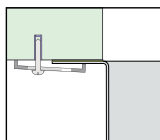


\*Custom ADA compliant versions are available



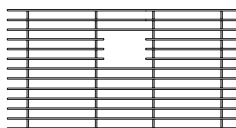
- **FEATURES**  
16-gauge type 304 stainless steel  
90° zero radius design
- **TECHNICAL INFORMATION**  
External dimension: 32"Lx17"Wx10"D  
Basin dimensions: 30"Lx15"Wx10"D
- **FINISHES**  
Gold PVD Satin Brushed stainless steel
- **INSTALLATION OPTIONS**  
Under-mount
- **MINIMUM CABINET SIZE (I.D.)**  
Under-mount 35"

## • DUAL-MOUNT INSTALLATION

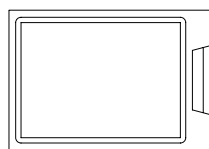


Under-mount

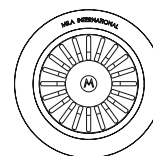
## • ACCESSORY OPTIONS



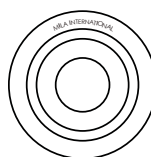
MBG-056GDSB  
Basin Grid



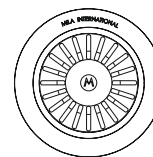
MCB-501BB  
Cutting Board



MKD-101GDSB  
Strainer



MDC-101GDSB  
Disposal Collar



MDC-102GDSB  
Disposal Collar

PROJECT INFORMATION			
Project			
Date	/ /	QTY	
Specifier			
Contact			
Note			

UNDER-MOUNT