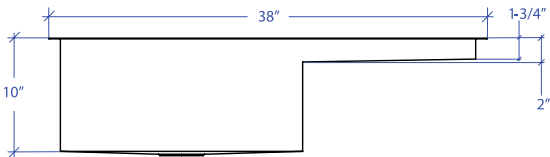
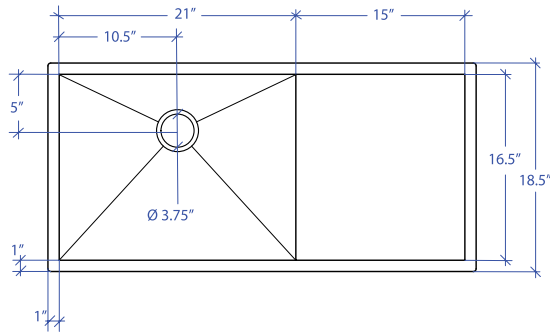


# FLATIRON MPU-652SB



\*Custom ADA compliant versions are available



## • FEATURES

- 16-gauge type 304 stainless steel
- 90° zero radius design

## • TECHNICAL INFORMATION

- External dimension: 38" Lx18.5" Wx10" D
- Basin dimensions: 21" Lx16.5" Wx10" D
- Prep o rd 1

## • FINISHES

- Satin Brushed stainless steel

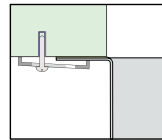
## • INSTALLATION OPTIONS

- Under-mount

## • MINIMUM CABINET SIZE (I.D.)

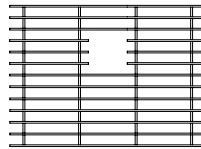
- Under-mount 40"

## • DUAL-MOUNT INSTALLATION

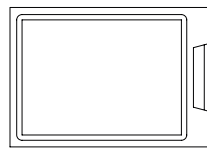


Under-mount

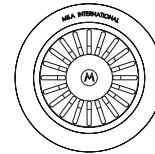
## • ACCESSORY OPTIONS



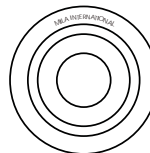
MBG-6508SB  
Basin Grid



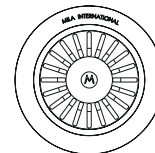
MCB-651BB  
Cutting Board



MKD-101SB  
Strainer



MDC-101SB  
Disposal Collar



MDC-102SB  
Disposal Collar

PROJECT INFORMATION			
Project			
Date	/ /	QTY	
Specifier			
Contact			
Note			

PREPBOARD UNDER-MOUNT