

# FLATIRON ADAMUD-652SB



## • FEATURES

16-gauge type 304 stainless steel  
90° zero radius design

## • TECHNICAL INFORMATION

External dimension: 31" Lx18.5" Wx5.5" D

Basin dimensions:

Left: 16" Lx16.5" Wx5.5" D

Right: 12" Lx16.5" Wx5.5" D

## • FINISHES

Satin Brushed stainless steel

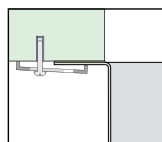
## • INSTALLATION OPTIONS

Under-mount

## • MINIMUM CABINET SIZE (I.D.)

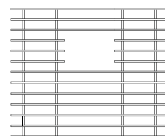
Under-mount 34"

## • DUAL-MOUNT INSTALLATION

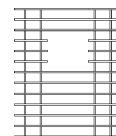


Under-mount

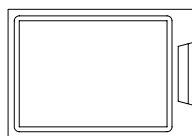
## • ACCESSORY OPTIONS



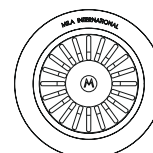
MBG-6504SB  
Basin Grid



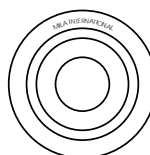
MBG-6501SB  
Basin Grid



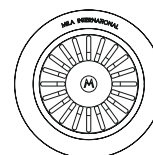
MCB-651BB  
Cutting Board



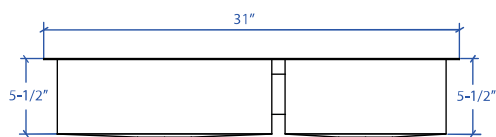
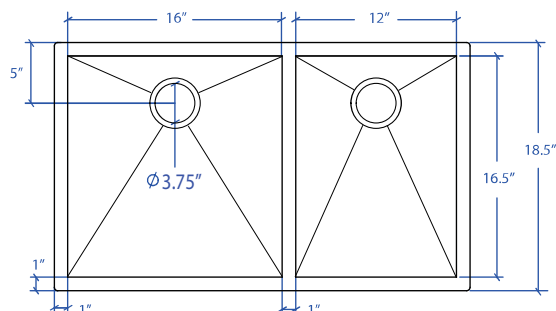
MKD-101SB  
Strainer



MDC-101SB  
Disposal Collar



MDC-102SB  
Disposal Collar



PROJECT INFORMATION			
Project			
Date	/ /	QTY	
Specifier			
Contact			
Note			

ADA UNDER-MOUNT