

## 10 YEAR MANUFACTURER'S

### LIMITED WARRANTY

All parts of this Kingston Brass faucet are warranted to the original retail purchaser to be free from defects in material and workmanship for a period of Ten(10) years from the date of purchase as shown on the purchaser's receipt.

This warranty is limited to defective parts only, labor charges and/or damage resulting from improper installation, repair or replacements, as well as incidental and consequential damages connected therewith are excluded.

Any damage to this faucet as a result of misuse, abuse, neglect, accident, or improper installation or any use not consistent with the instructions furnished by us, will void this warranty.

Replacement parts can be obtained from your local dealer. Freight cost is not covered by manufacturer.

### **CAUTION!!!**

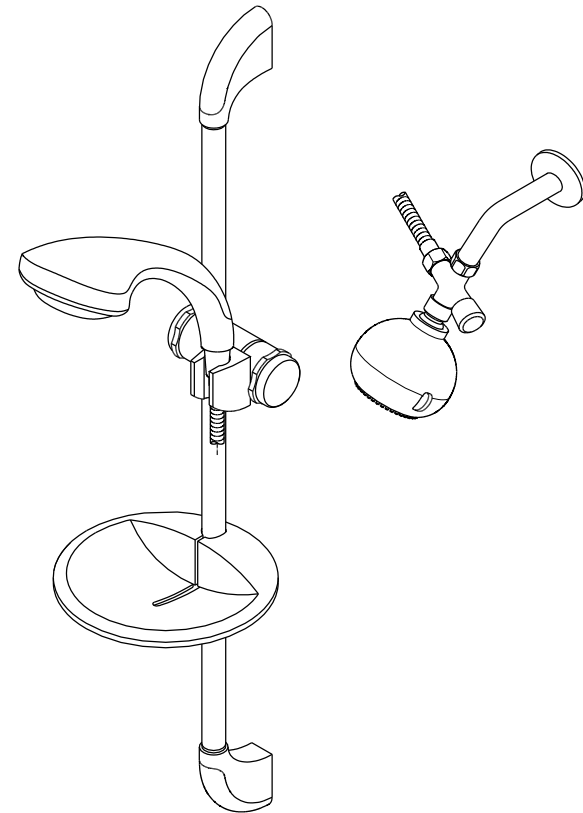
1. Water lines must be completely flushed before use, to avoid debris & clogs in your water system leading to mal-function and reduction of water flow.
2. Warranty to be void if water lines are not flushed before use of new faucet
3. Use of abrasives of any strength may damage the finish of your faucet and void this warranty.

### **PROBLEMS SHOOTING**

PROBLEM	CAUSE	CORRECTIVE ACTION
Leaks underneath handle	Bonnet nut has come loose	Remove the handle and tightening the bonnet nut
Leaks from the spout	Valve seat and spring are worn	Replace the valve seat and spring
Inconsistent water flow pattern	Aerator is dirty or aged	Release aerator and check on rubber gasket if aged or replace with new aerator
Faucet is dirty	Caused by stubborn water spot	Clean with mild soap and warm water as often as possible
Handles works backward	Handle install backward	Rotate the right stem stop assembly 180 degree

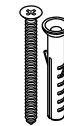
CODE APPROVAL: LA#M-000018

**KINGSTON BRASS**  
THE TRADITION OF FINE BRASS



### Parts:

Mounting Screw  
& Anchor



4 Pcs

[www.kingstonbrass.com](http://www.kingstonbrass.com)

TOLL-FREE CUSTOMER SERVICE: 1-877-2-KBRASS  
TECHNICAL SUPPORT E-mail: [service@kingstonbrass.com](mailto:service@kingstonbrass.com)  
12775 Reservoir Street, Chino, CA91710

## Installation Instructions For Use With KB's Shower Combination

### Before installation:

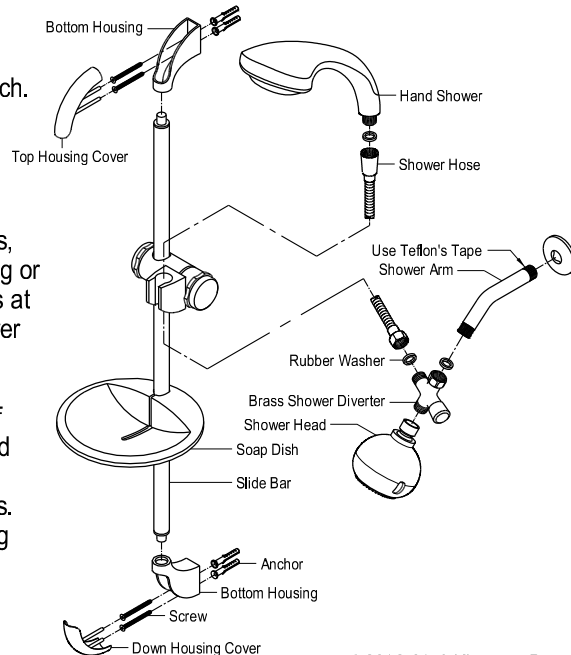
Hold the existing shower arm up and down to ensure the plumbing behind the wall is rigid to hold the weight of the new shower unit - about 3-4 lbs when filled with water.

### Legal Disclaimer :

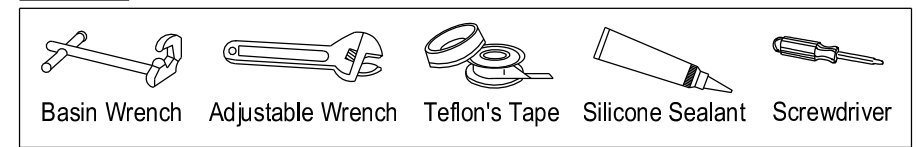
Slide Bar is not a handle or safety grab bar.  
Slide Bar is only for use of hand shower adjustable height use.  
This bar do not support ADA compliant code and do not ever use to support human weight of push or pull.

### Installation Instruction

1. Slip the soap dish plate into the slide bar.
2. Connect both top and bottom housing to slide bar and put slide bar on wall, marked screw holes on desired mounting location.
3. Remove slide bar from the wall and drill hole on the marking hole. Gently tap wall anchors into the holes until they are flush with the wall surface.
4. Attach slide bar to wall, input the screws into the wall anchor and firm them.
5. Place the flange into the shower rod.
6. Wrap 4 to 6 wraps of teflon's tape on both end of the shower rod.
7. Thread the male nipple into female nipple (in wall), tighten with pipe wrench.
8. Slide shower flange to the wall.
9. Install brass shower diverter to the other end of shower rod and hand tighten clockwise.
10. Turn the water on and check for leaks, any leaks will require minor tightening or adjustment. If the shower head leaks at the connection to the thread of shower arm, tighten the connection more by using a wrench.
11. Connect and hand tighten one end of hose to hand shower and another end to shower diverter.
12. Turn the water on and check for leaks. Any leaks will require minor tightening or adjustment.



### Need Tools:



### Parts:

