

10 YEAR MANUFACTURER'S

LIMITED WARRANTY

All parts of this GOURMETIER FAUCET are warranted to the original retail purchaser to be free from defects in material and workmanship for a period of Ten(10) years from the date of purchase as shown on the purchaser's receipt.

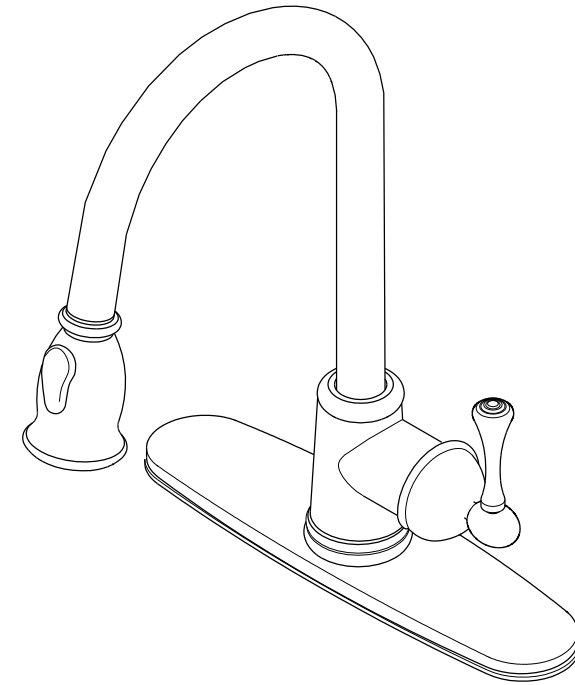
This warranty is limited to defective parts only, labor charges and/or damage resulting from improper installation, repair or replacements, as well as incidental and consequential damages connected therewith are excluded.

Any damage to this faucet as a result of misuse, abuse, neglect, accident, or improper installation or any use not consistent with the instructions furnished by us, will void this warranty.

Replacement parts can be obtained from your local dealer. Freight cost is not covered by manufacturer.

CAUTION!!!

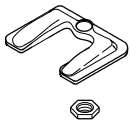
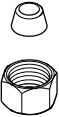
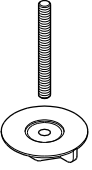
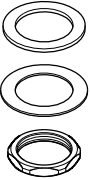
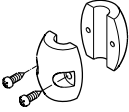
1. Water lines must be completely flushed before use, to avoid debris & clogs in your water system leading to mal-function and reduction of water flow.
2. Warranty to be void if water lines are not flushed before use of new faucet.
3. Use of abrasives of any strength may damage the finish of your faucet and void this warranty.



PROBLEMS SHOOTING

PROBLEM	CAUSE	CORRECTIVE ACTION
Leaks underneath handle	Bonnet nut has come loose	Remove the handle and tightening the bonnet nut
Leaks from the spout	Valve seat and spring are worn	Replace the valve seat and spring
Inconsistent water flow pattern	Aerator is dirty or aged	Release aerator and check on rubber gasket if aged or replace with new aerator
Faucet is dirty	Caused by stubborn water spot	Clean with mild soap and warm water as often as possible
Handles works backward	Handle install backward	Rotate the right stem stop assembly 180 degrees

Parts:

U Metal Washer & Lock Nut	Cone Washer & Coupling Nut	Stud & Large Wing Nut	Rubber Washer & Metal Washer & Brass Nut	Plumb & Screw
				
X1	X2	X2	X2	X2

www.kingstonbrass.com

TOLL-FREE CUSTOMER SERVICE: 1-877-2-KBRASS

TECHNICAL SUPPORT E-mail: service@kingstonbrass.com

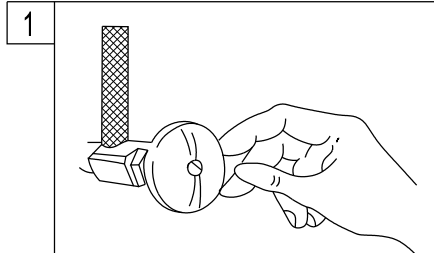
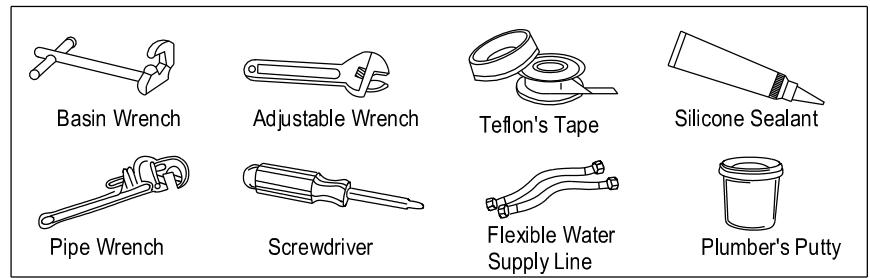
12775 Reservoir Street, Chino, CA91710

INSTALLATION INSTRUCTIONS

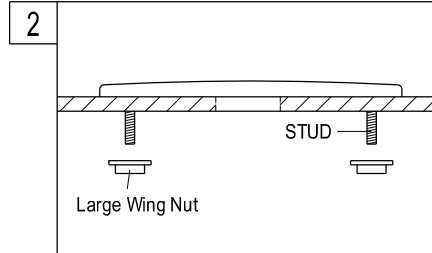
For Use With GF's Pull-Down Sprayer Kitchen Faucet

BEFORE BEGINNING INSTALLATION

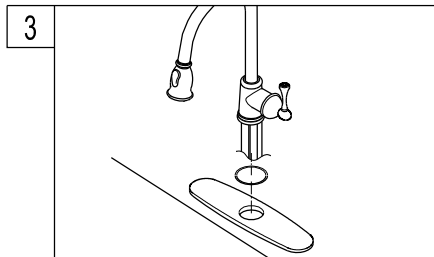
1. Flush plumbing lines to clear debris in pipe and plumbing lines to avoid existing clogs into waterway & cartridge system of new faucet fixture.
2. Shut off both supply lines after flushing



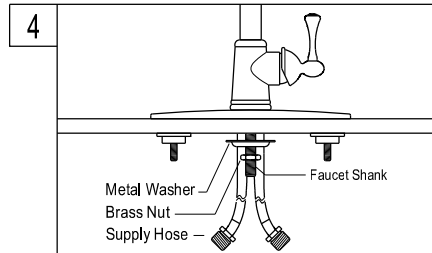
1. Shut off hot and cold water supply under sink, plug the sink drain with cloth to avoid losing small parts then remove the old faucet.



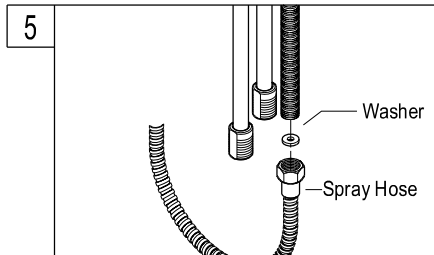
2. For Installation using the deck plate, Thread mounting bolts stud into deck plate, place plastic plate under the deck plate smooth side down and place the plates on deck. Making sure to align center hole on plate with center hole on counter or sink, as to allow for easy insertion of spout



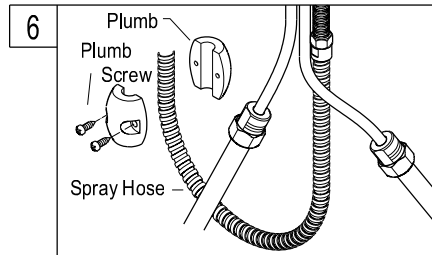
3. Insert o-ring into bottom groove of faucet, from above insert faucet, making sure to center the front of the faucet.
(Please note, your Kingston Brass faucet has a swivel range, so it is important that you take the time to align the faucet properly, by making sure that the handle faces forward at center closed position and that spout swivel range is centered)



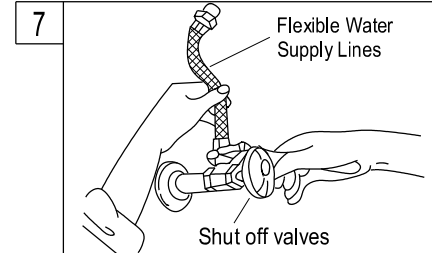
4. Secure faucet by threading wing nut onto mounting bolts and tighten until deck plate feels firmly secure.



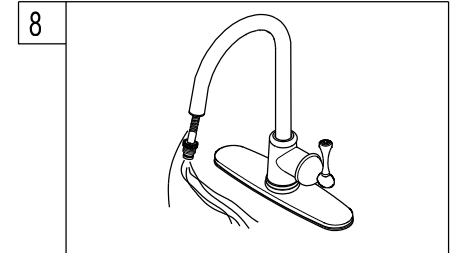
5. Pull the stainless steel hose up through the faucet till the attachment nut is up against the bottom of the faucet shank, from underneath slip on rubber gasket and brass washer onto the shank then thread with brass nut, tighten lightly with hand and check faucet alignment, then retighten with wrench.



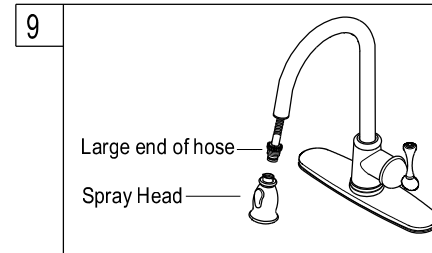
6. Under the sink, attach the plumb onto the spray hose. Adjust the plumb at least 2" higher than the bottom lines and fix with screws tightly.



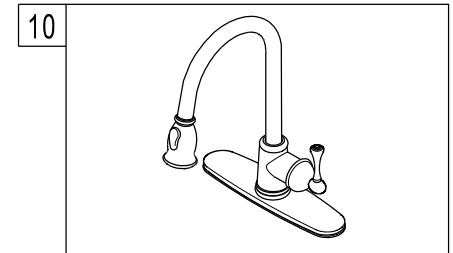
7. Once all connection have been made turn on watersupply and check for leaks.



8. Pull the stainless steel hose assembly out of the spout and hold into the sink, turn faucet on to the full mixed position, let the water run for at least one minutes to flush the lines.



9. Attach the spray head to the large end of the stainless steel hose and press the soft oval button to assure the Spray head is working.



10. Insert the spray head onto the faucet body to assure the hose assembled correctly.