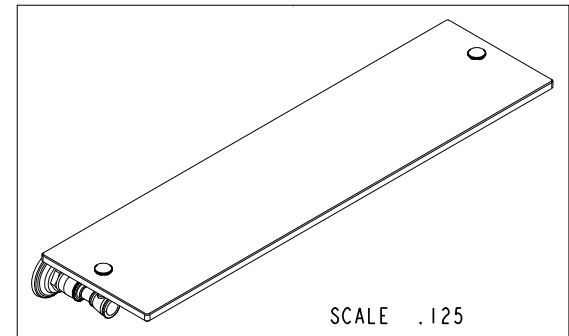
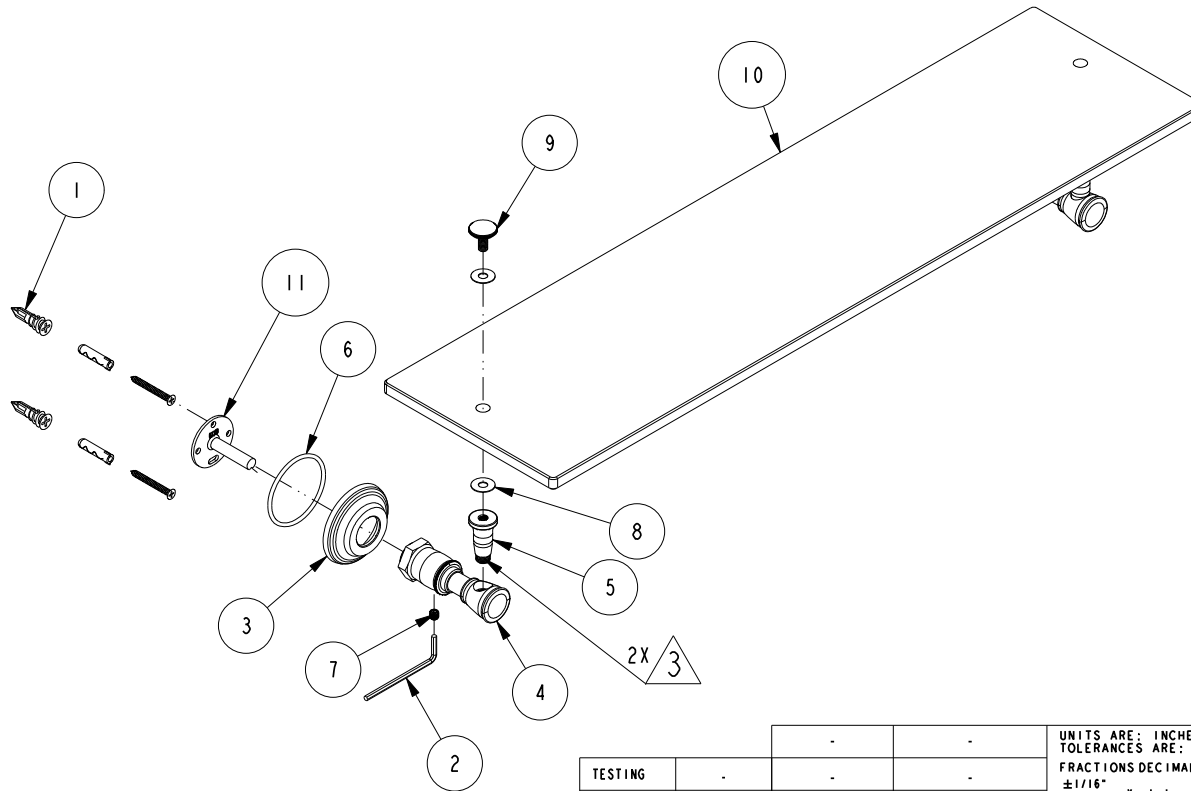


NOTES:

- (N1) 1. FIT / FORM / FUNCTION SHALL FOLLOW PS-E.008.
- (N2) 2. PLACE ITEM# 1 AND 2 IN SEPARATE BAG.
- (N3) 3. APPLY ADHESIVE LOCTITE 680.

**BILL OF MATERIAL (CURRENT LEVEL)**

ITEM	PT/ASSY	DESCRIPTION	TYPE	QTY.
1	1-206	HARDWARE PACK	ASSEMBLY	2
2	10615	HEX KEY, 3MM ALLOY STEEL	PART	1
3	40553	ESCUTCHEON	PART	2
4	40572	POST	PART	2
5	40573	GLASS SHELF RISER	PART	2
6	91298	O-RING, #2-134	PART	2
7	92031	SCRW, M6 X 1 X 6 SKT HD CUP PT SS	PART	2
8	0234NW	TRANSLUCENT NYLON WASHER	PART	4
9	0234S	TOP SCREW	PART	2
10	4534T_24TSC	SHELF GLASS	PART	1
11	6XXB	MOUNTING BRACKET	PART	2



TESTING	-	-	-
ASSEMBLY	-	-	-
PLATING	-	-	-
POLISHING	-	NEXT ASSY	USED ON
MACHINING	-	APPLICATION	
TOOLING	FIXTURE #	REMOVE ALL BURRS AND SHARP EDGES	

UNITS ARE: INCHES [MM]  
 TOLERANCES ARE:  
 FRACTIONS DECIMALS ANGLES  
 $\pm 1/16"$   $.X \pm .1$  [2,5]  $\pm 1^\circ$   
 $.XX \pm .06$  [1,3]

(X.XXX) DENOTES CRITICAL DIMS.  
 ALL THREADS ARE CRITICAL

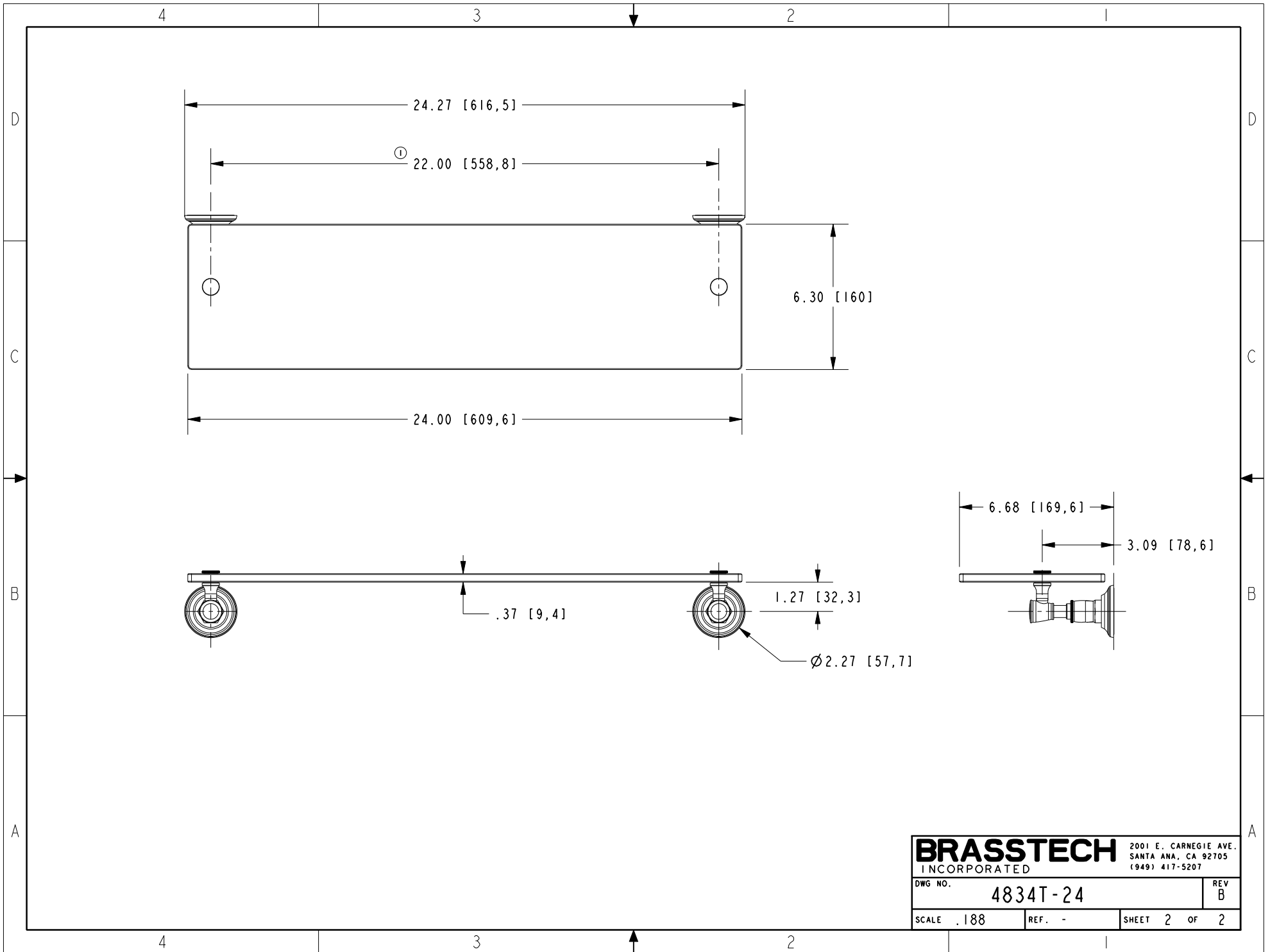
**BRASSTECH** 2001 CARNEGIE AVE.  
 INCORPORATED SANTA ANA, CA 92705  
 (949) 417-5207

**24" GLASS SHELF**

-	B	EN-2996	12/31/15	J.M.
-	A	EN-2717	04/04/14	-
-	-	EN-2086	03/17/14	-
ZONE	REV	DESCRIPTION	DATE	APPROVED

COPYRIGHT 2005 BRASSTECH, INC.  
 THESE DRAWINGS AND THE DESIGNS  
 DEPICTED HEREIN ARE THE PROPRIETARY  
 PROPERTY OF BRASSTECH. ANY USE  
 OR REPRODUCTION IS SUBJECT TO  
 THE EXPRESS APPROVAL OF BRASSTECH.  
 UNAUTHORIZED USE IS STRICTLY  
 PROHIBITED. ALL RIGHTS RESERVED.

DWG NO.	<b>4834T-24</b>	REV	B
SCALE	.200	REF.	-
SHEET	1	OF	2



<b>BRASSTECH</b>		2001 E. CARNEGIE AVE.	
INCORPORATED		SANTA ANA, CA 92705	
DWG NO. 4834T-24		REV B	
SCALE .188	REF. -	SHEET 2 OF 2	

2001 E. CARNEGIE AVE.  
SANTA ANA, CA 92705  
(949) 417-5207

DWG NO. 4834T-24 REV B

SCALE .188 REF. - SHEET 2 OF 2