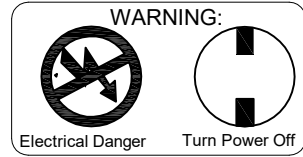


ASSEMBLY INSTRUCTION MODEL #ED3564202CH

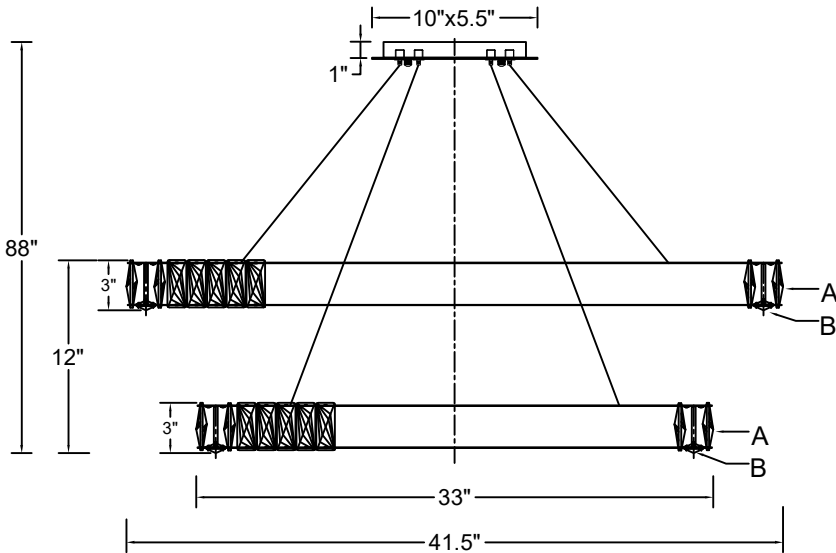
Caution: when installing fixture, gloves must be worn to prevent scratches.



All electrical components must be installed by a licensed electrician in accordance with the National Electric Code and the appropriate local electrical codes.



INSTALLATION OR ASSEMBLY INSTRUCTIONS

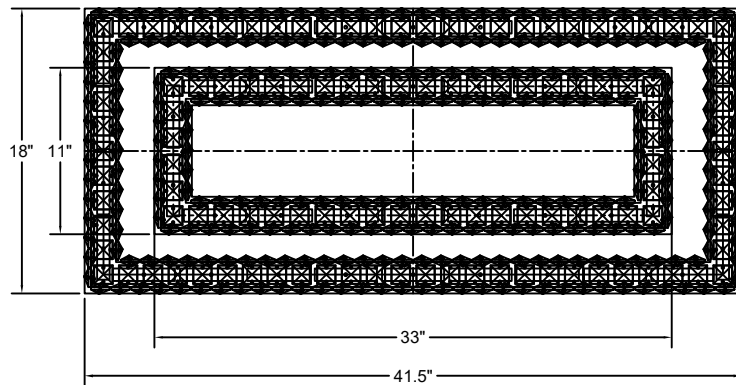


Fixture uses Integrated LEDs (Included) 105 Watts Max.

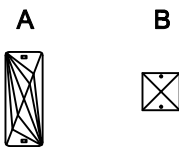
The fixture is dry rated

How to Install

1. Place the mounting plate over the outlet box and mark two(2) points at the center of the slot holes on the mounting plate.
2. Drill the holes at the marked points and insert the plastic wall anchors.
3. Place the mounting plate over the outlet box and secure with the anchor screws.
4. Feed the safety cable through the center hole of the mounting plate. Wrap it around the mounting plate twice and secure it with the locking nut.
5. Secure the fixture up to the ceiling and do the wire connections. Secure the canopy with the hex nut, check ring and the finial.



DETAILED ILLUSTRATION

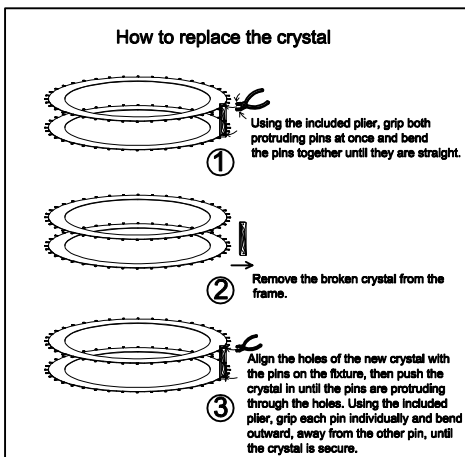
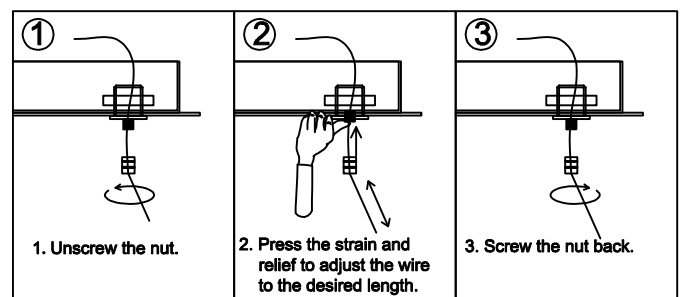


Crystal Sets

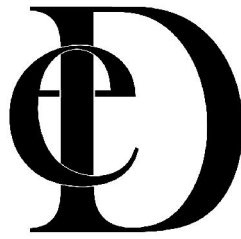
A. 202Sets. (1)30x76mm

B. 84Sets. (1)30x30mm

How to adjust the length of the cable wire



WARNING: This product can expose you to Lead, which is known to the State of California to cause cancer and/or birth defects or reproductive harm. For more information go to www.P65Warnings.ca.gov

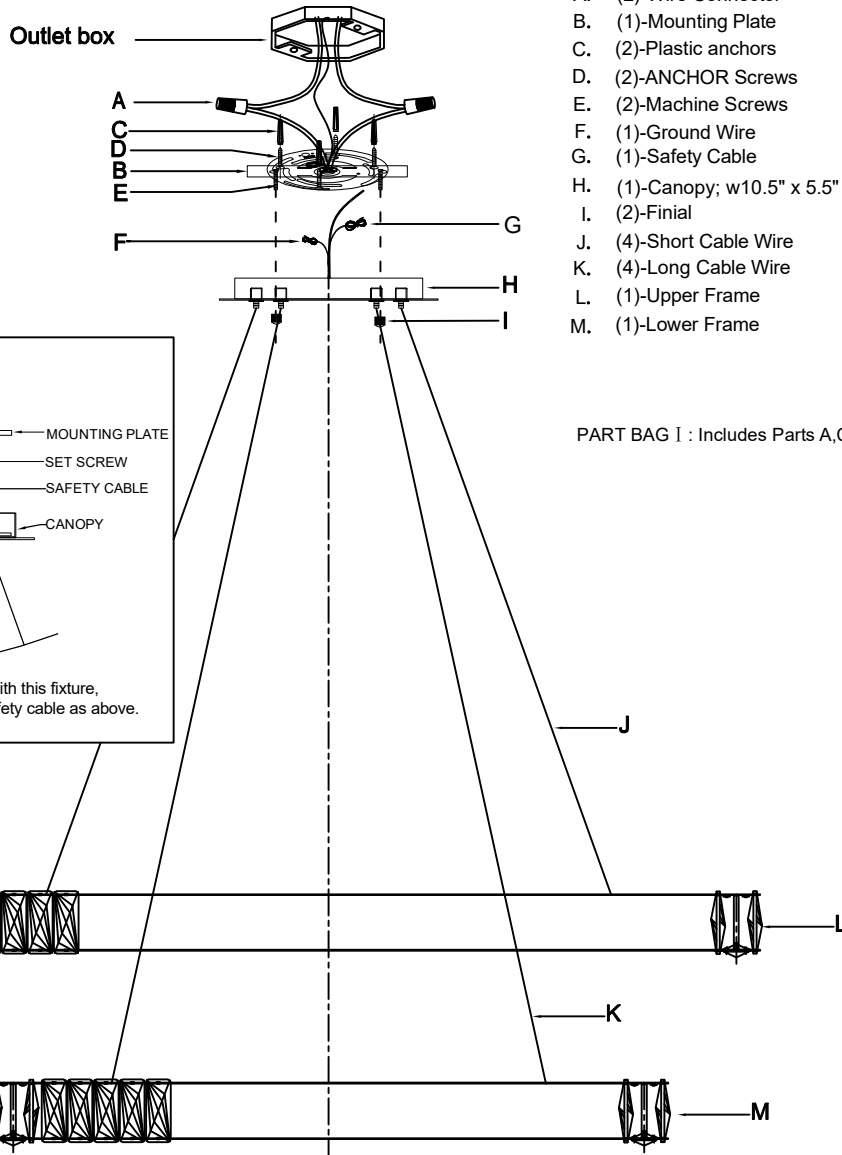


PART NUMBER MODEL #ED3564202CH

Part Number

Part Numbers

- A. (2)-Wire Connector
- B. (1)-Mounting Plate
- C. (2)-Plastic anchors
- D. (2)-ANCHOR Screws
- E. (2)-Machine Screws
- F. (1)-Ground Wire
- G. (1)-Safety Cable
- H. (1)-Canopy; w10.5" x 5.5" x h1" (XFB3564202CHCAN10.5IN)
- I. (2)-Finial
- J. (4)-Short Cable Wire
- K. (4)-Long Cable Wire
- L. (1)-Upper Frame
- M. (1)-Lower Frame



PART BAG I : Includes Parts A,C

