

# CRYST RAMA



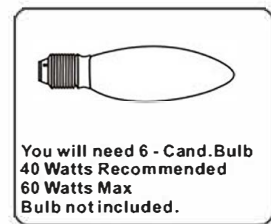
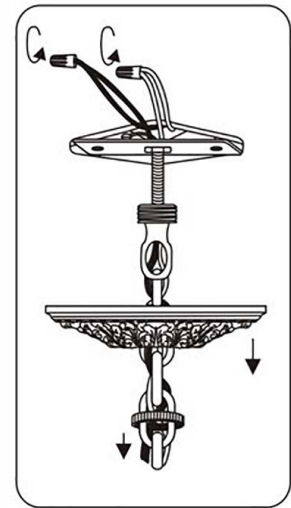
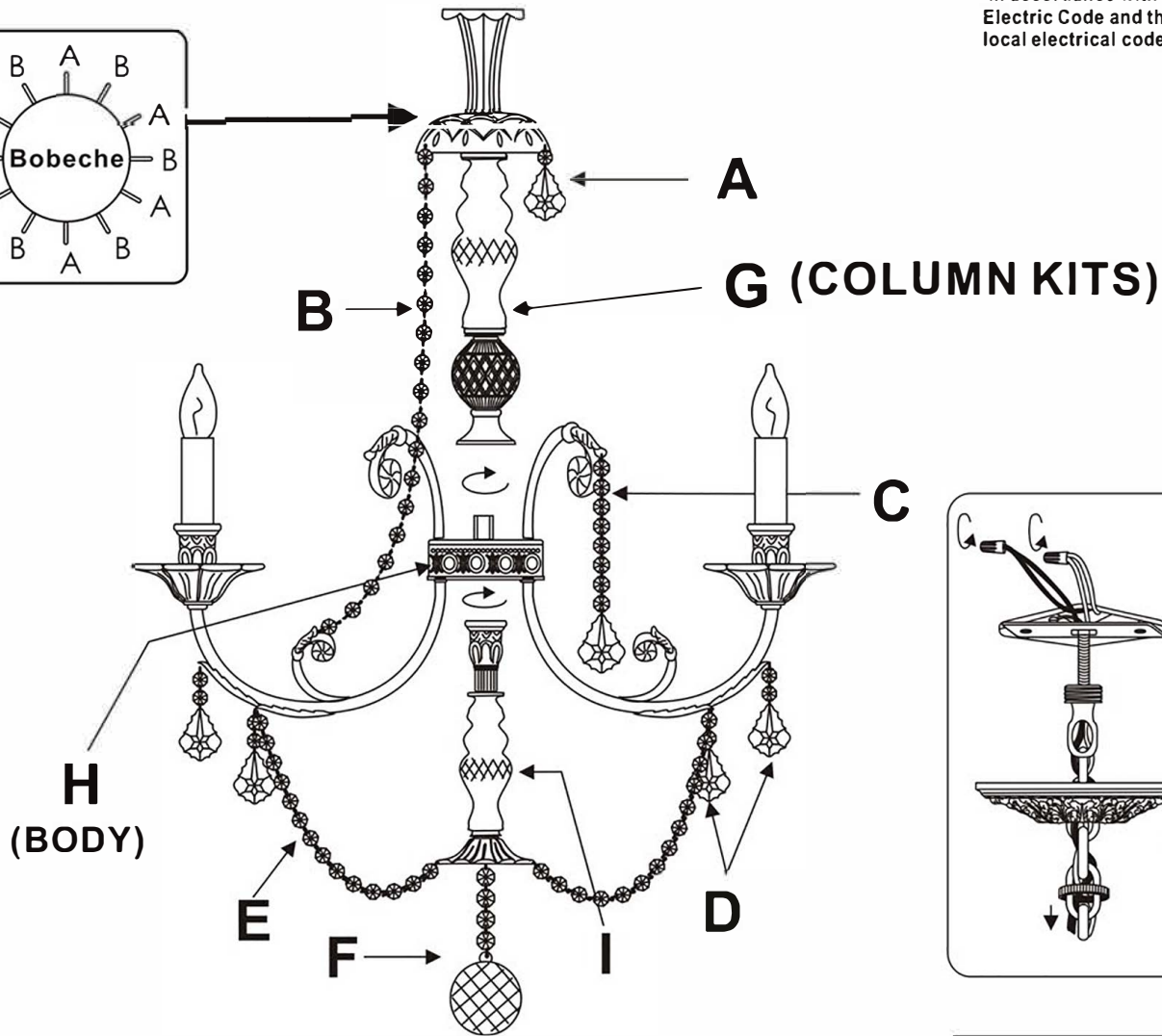
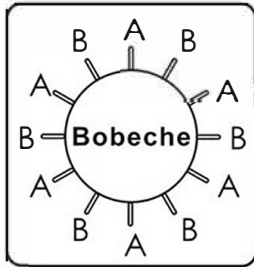
1958

95 Cantiague Rock Road, Westbury NY 11590  
 ph:516.931.9090 fax: 516. 931.1254  
 info@crystorama.com www.crystorama.com

## MODEL#:5116 ASSEMBLY AND DRESSING INSTRUCTIONS



All electrical components must be installed by a licensed electrician in accordance with the National Electric Code and the appropriate local electrical codes.



A= (20/62-2.5"+1 Jewel)\*6pcs (Every other pin hole.)

B= (19 Jewels Strand)\*6pcs (Every other pin hole.)

C= (20/75-3" + 8 Jewels)\*6pcs

D= (20/75-3" + 2 Jewels)\*12pcs

E= (16 Jewels Strand)\*6pcs

F= (1x40mm Ball + 6 Jewels)\*1pc

### ASSEMBLY STEPS:

- 1) G —————> H
- 2) I —————> H
- 3) A.B.C.D.E.F —————> H