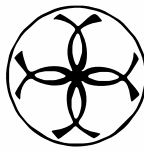


# CRYST RAMA



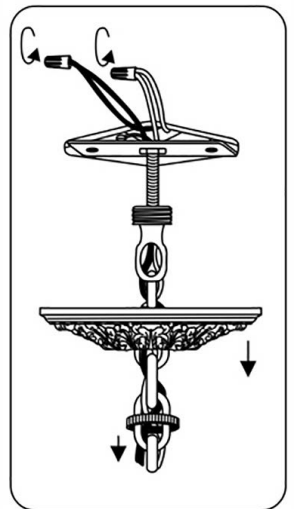
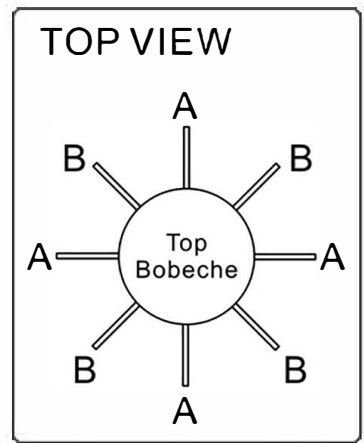
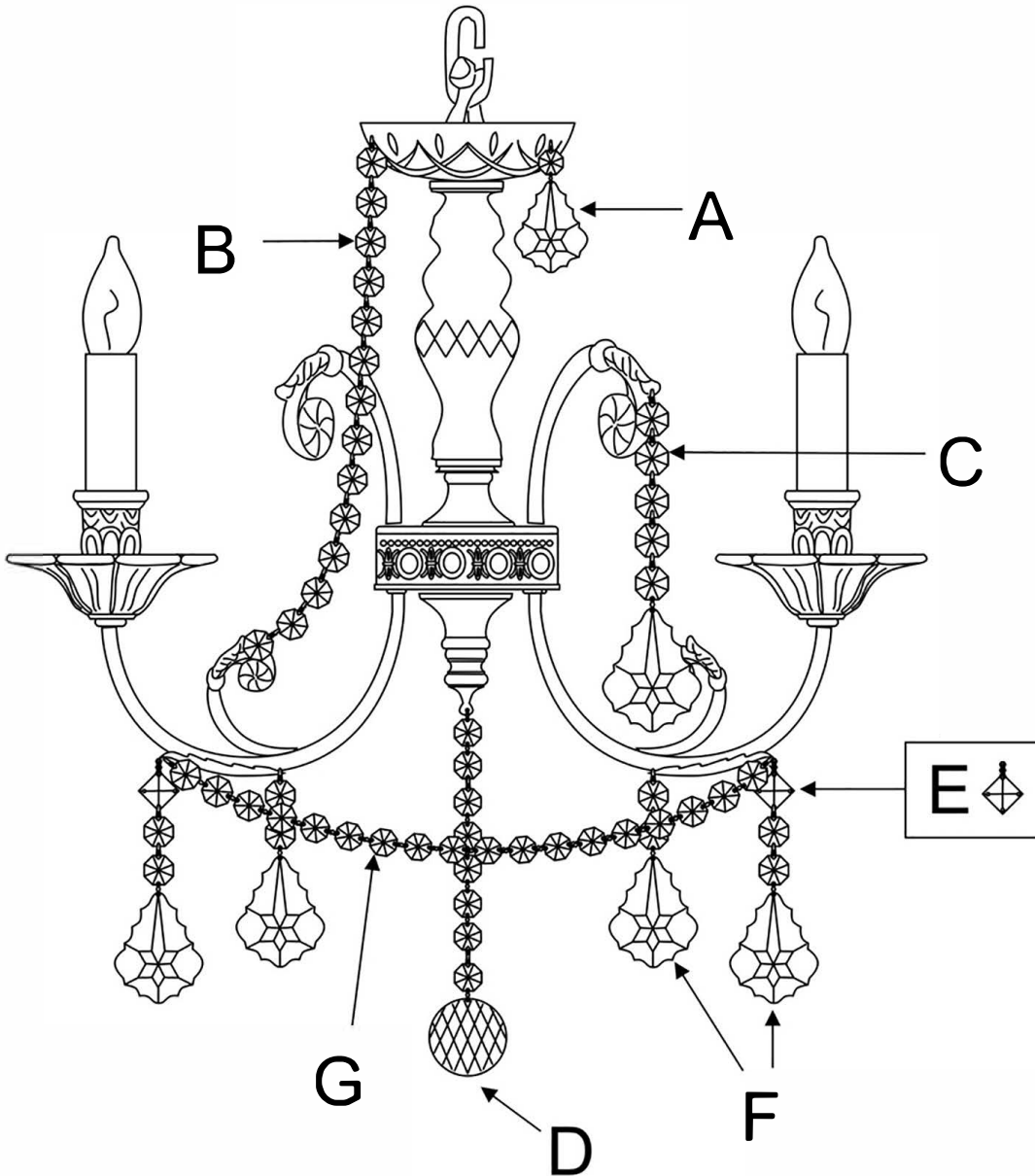
1958

95 Cantiague Rock Road, Westbury NY 11590  
 ph: 516.931.9090 fax: 516.931.1254  
 info@crystorama.com www.crystorama.com

## MODEL#: 5114 ASSEMBLY AND DRESSING INSTRUCTIONS



All electrical components must be installed by a licensed electrician in accordance with the National Electric Code and the appropriate local electrical codes.



- A = (20/50-2") \* 4sets
- B = (14 Jewels Strand) \* 4sets
- C = (20/64-2.5" + 5 Jewels) \* 4sets
- D = (1x40mm Ball + 8 Jewels) \* 1pc
- E = (Square - 4 Holes) \* 4sets
- F = (20/64-2.5" + 2 Jewels) \* 8sets
- G = (16 Jewels Strand) \* 4sets

