

CRYSTORAMA

LIGHTING THE WAY FOR SIXTY YEARS

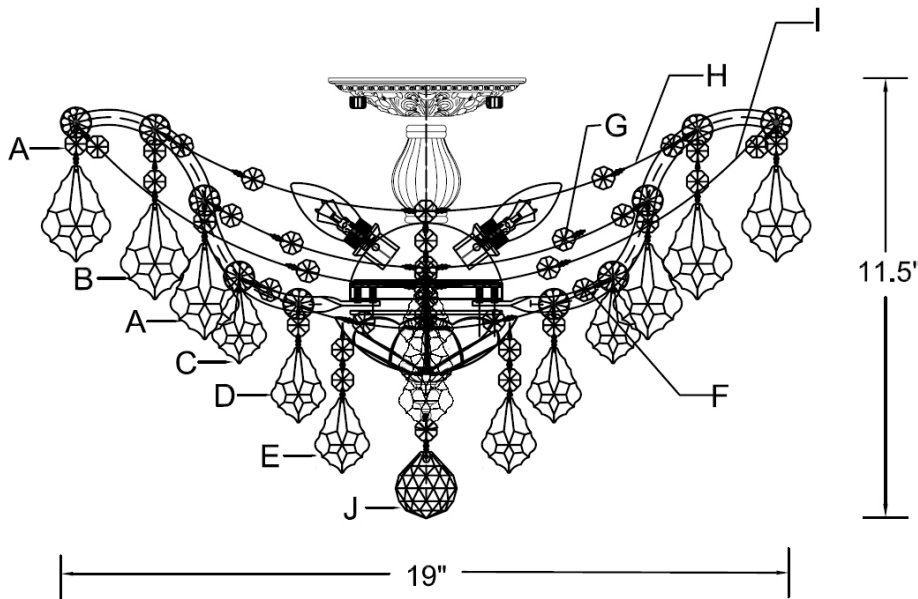
ASSEMBLY INSTRUCTION MODEL #4437-CH-CL-S



All electrical components must be installed by a licensed electrician in accordance with the National Electric Code and the appropriate local electrical codes.



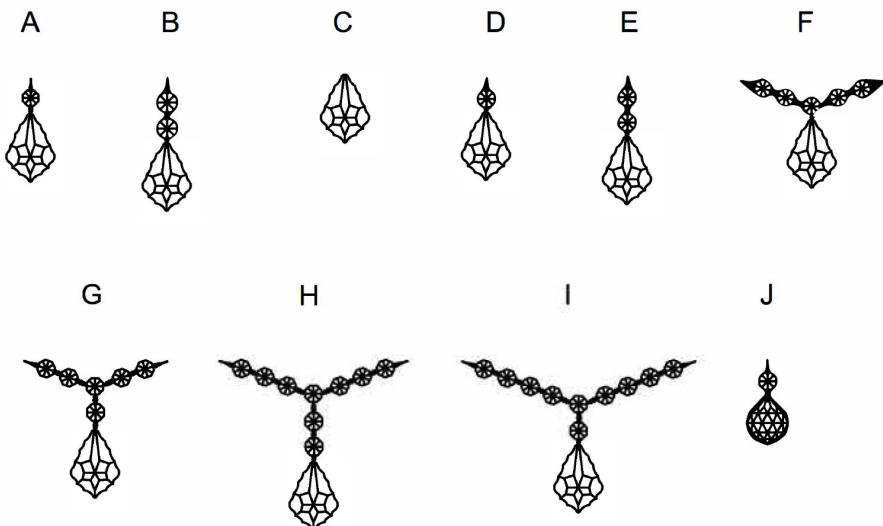
**You will need 5-Candelabra Base Bulb
40 Watts Recommended 60 Watts Max
USE LED BULBS FOR EXTENDED USE**



How to Install

1. Do a complete inventory of all parts and components before you start installing.
2. Using the ball nuts secure the canopy to the mounting plate.
3. Install bobeches, bulbs and proceed to connecting the power.
4. When you begin to dress the fixture, start with packet labeled (A).
5. **IMPORTANT:** Apply crystal sets in alphabetical order.

DETAILED ILLUSTRATION



Crystal Sets

- A. 16Sets. (1)14mm + AS20-2.5"
- B. 8Sets. (2)14mm + AS20-2.5"
- C. 8Sets. AS20-2"(No Jewel)
- D. 8Sets. (1)14mm + AS20-2"
- E. 8Sets. (2)14mm + AS20-2"
- F. 8Sets. (4)14mm + (1)14mm 3 holes + AS20-2"
- G. 8Sets. (5)14mm + (1)14mm 3 holes + AS20-2"
- H. 8Sets. (8)14mm + (1)14mm 3 holes + AS20-2"
- I. 8Sets. (9)14mm + (1)14mm 3 holes + AS20-2"
- J. 1Piece. (1)14mm + AS8-40mm Ball

WARNING: This product can expose you to Lead, which is known to the State of California to cause cancer and/or birth defects or reproductive harm. For more information go to www.P65Warnings.ca.gov

CRYSTORAMA

LIGHTING THE WAY FOR SIXTY YEARS

PART NUMBER MODEL #4437-CH-CL-S

Part Number

Part Numbers

- A. (2)-Wire Connector
- B. (1)-Mounting Plate
- C. (2)-Outlet Box Screws
- D. (1)-Ground Wire
- E. (1)-Canopy; w5" x h1" (XFB4430CHCAN5IN)
- F. (2)-Ball Nut (XFB4430CHBANUT)
- G. (1)-Dish; Ø5" 11mm hole (XFB4437CHDIBOB5IN)
- H. (1)-Finial (XFB4405CHFIN)
- I. (1)-Frame
- J. ()-Rosette

