

Sink assembly

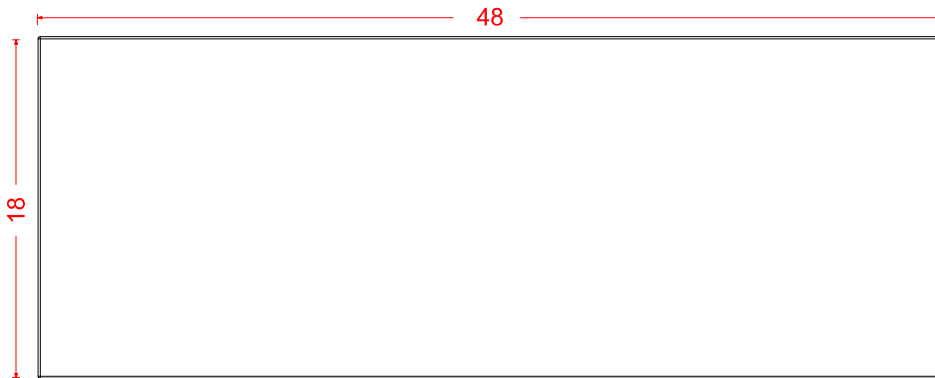
Install the faucet to the top and drains to the sink. Refer to the faucet and drain manufacturer's instructions. Complete the faucet connections. Run water and check for leaks. Apply a bead of silicone behind the top surface to the finished wall.

Installation notes:

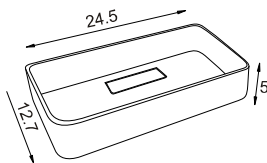
Faucet and silicone are not included. All sizes of sinks are subject to tolerance: +/- 0.40 inches (ceramic) and +/- 0.20 inches (glass and resin)

WOODEN TOP ART. 55959

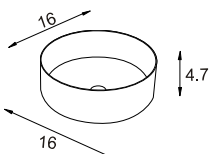
Top view of sink



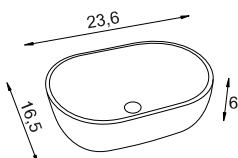
SOLID SURFACE BASIN ART. 50184



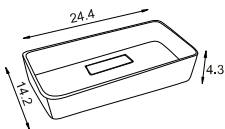
CERAMIC BASIN ART. 50100



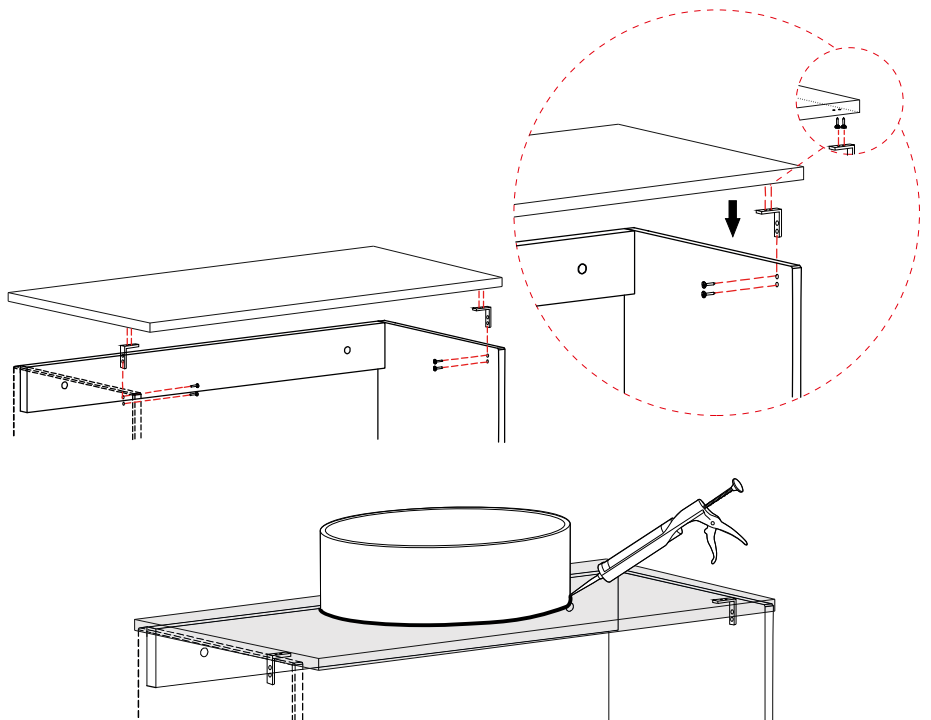
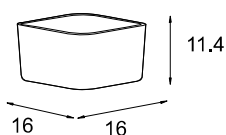
CERAMIC BASIN ART. 50179



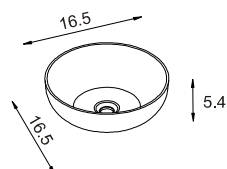
CERAMIC BASIN ART. 50335



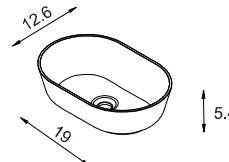
CERAMIC BASIN ART. 50358



RECYCLED WASHBASIN ART.50361



RECYCLED WASHBASIN ART.50362



RECYCLED WASHBASIN ART.50363

