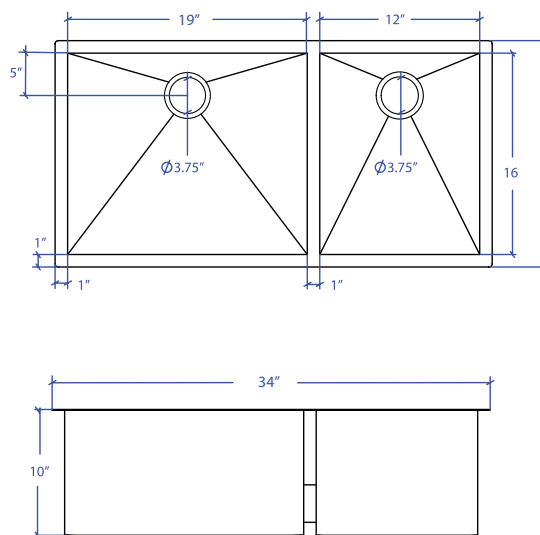


# FLATIRON MUD-653SB



\*Custom ADA compliant versions are available



## • FEATURES

- 16-gauge type 304 stainless steel
- 90° zero radius design

## • TECHNICAL INFORMATION

- External dimension: 34"Lx18.5"Wx10"D
- Basin dimensions:  
Left: 19"Lx16.5"Wx10"D  
Right: 12"Lx16.5"Wx10"D

## • FINISHES

- Satin Brushed stainless steel

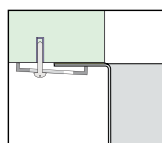
## • INSTALLATION OPTIONS

- Under-mount

## • MINIMUM CABINET SIZE (I.D.)

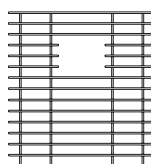
- Under-mount 37"

## • DUAL-MOUNT INSTALLATION

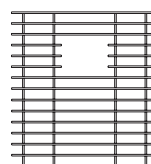


Under-mount

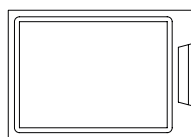
## • ACCESSORY OPTIONS



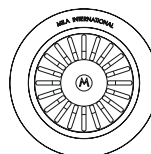
MBG-6506SB  
Basin Grid



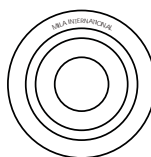
MBG-6501SB  
Basin Grid



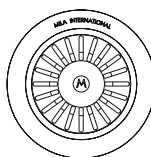
MCB-651BB  
Cutting Board



MKD-101SB  
Strainer



MDC-101SB  
Disposal Collar



MDC-102SB  
Disposal Collar

PROJECT INFORMATION			
Project			
Date	/ /	QTY	
Specifier			
Contact			
Note			

UNDER-MOUNT