

Kräus®

INSTALLATION MANUAL

**Seda™ 8" Widespread
2-Handle Faucet**

FUS-1823

Thank you for purchasing Kraus

We would like to take this opportunity to thank you for your business with Kraus USA. It is our sincere hope that you are completely satisfied with your experience. We welcome any questions or comments you may have, and will be glad to assist you in the future.

For more information about Kraus products, please visit our website at:

www.kraususa.com

Please register your new Kraus product at the following web address in order to activate the warranty and receive the full benefit of customer support:

www.kraususa.com/registration

Sincerely,

Kraus Customer Service Department

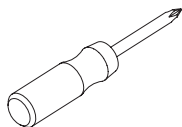
Prior to Installation:

- Make sure you have all necessary parts by checking the diagram and parts list. If any part is missing or damaged, please contact Kraus Customer Service at 800-775-0703 for a replacement
- Turn off the hot and cold water supply at the angle stops and turn on the old faucet to release any built up pressure. Remove existing faucet. Clean sink or countertop to remove any debris, plumber's putty, or silicone
- Place bucket under angle stops. Turn on angle stops to flush any debris prior to installing new plumbing. Shut off angle stops
- Max countertop thickness: 1 3/8"

Tools you will need:



Adjustable Wrench



Phillips Screwdriver

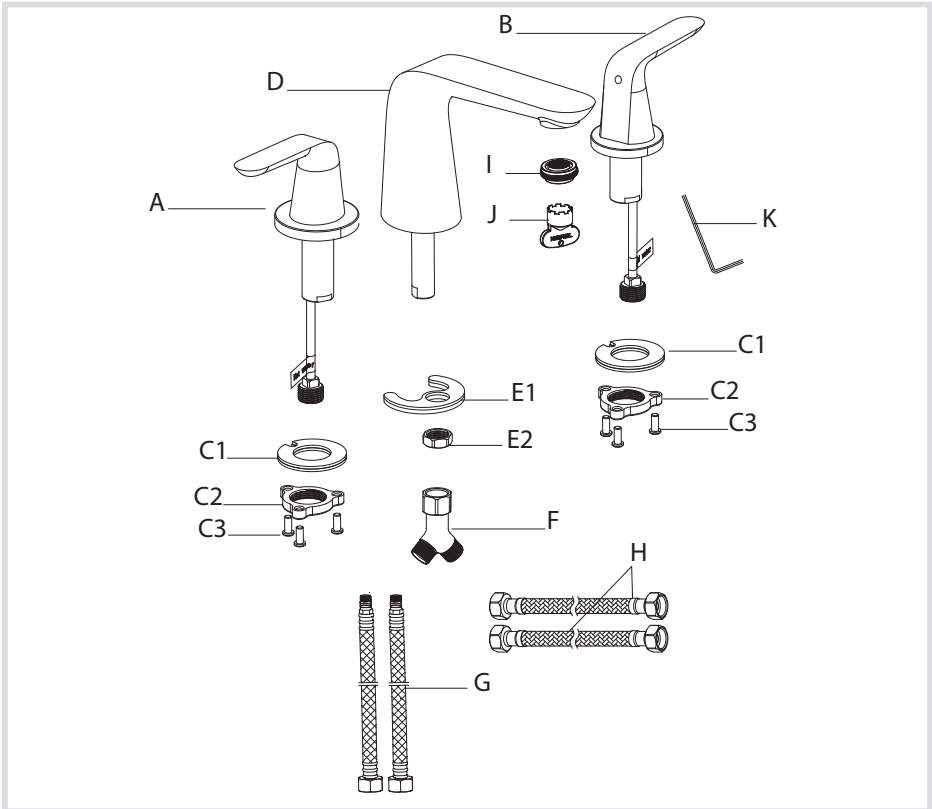


Safety Goggles



Bucket

FUS-1823 Diagram and Parts List



A. Hot Handle Valve

B. Cold Handle Valve

C. Hot & Cold Handle Mounting

Hardware:

C1. Rubber & Metal Washer

C2. Mounting Nut

C3. Mounting Screws

D. Spout

E. Spout Mounting Hardware:

E1. Rubber & Metal U-Washer

E2. Mounting Nut

F. T-Union

G. Hot & Cold Waterlines

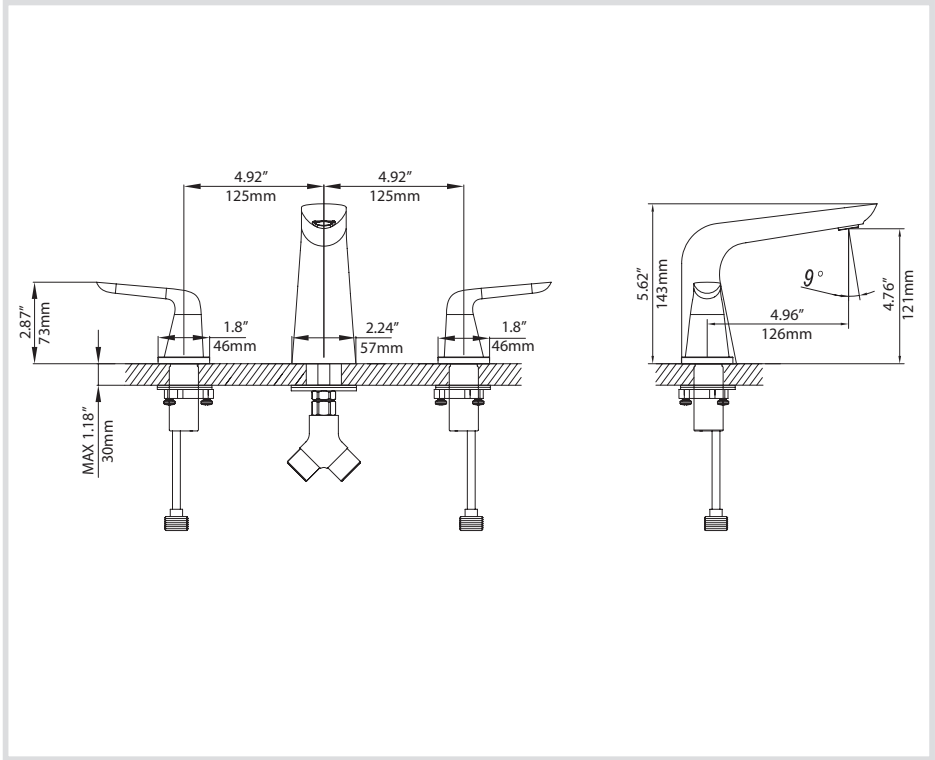
H. 3/8 in. OD x 1/2 in. IPS Waterlines

I. Aerator

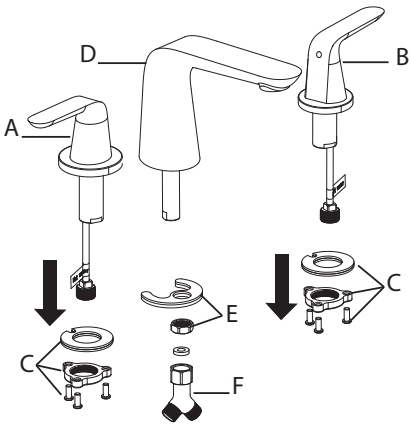
J. Aerator Key

K. Hex Wrench

Faucet Dimensions

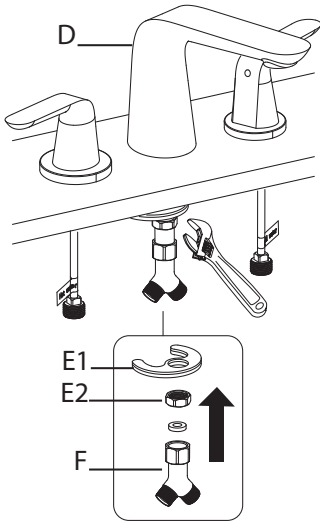


Step 1: Remove mounting hardware and T-union



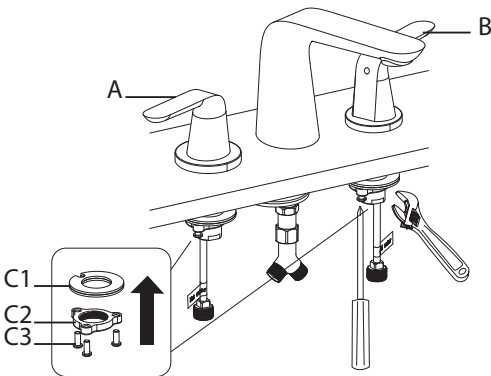
Remove T-union (F) and mounting hardware (E) from spout (D).
Remove mounting hardware (C) from hot and cold handle valves (A & B)

Step 2: Install & secure spout



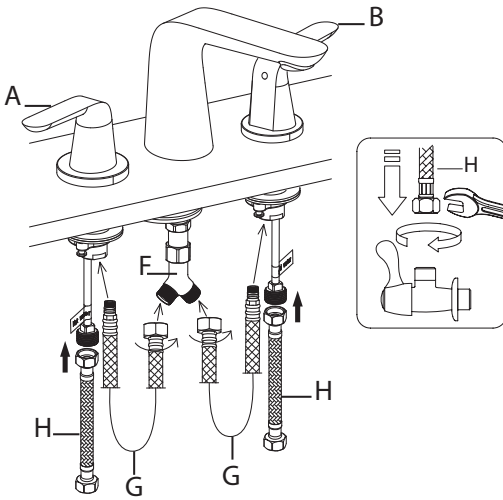
Install spout (D) through hole in countertop or sink. Attach rubber & metal U-washer (E1) and mounting nut (E2). Adjust spout (D) to proper position and tighten mounting nut (E2) with adjustable wrench. Secure T-union (F) onto supply line of spout (D). Tighten T-union (F) with adjustable wrench

Step 3: Install & secure hot and cold handle valves



Install hot and cold handle valves (A & B) through hole in countertop or sink. Attach rubber & metal washer (C1) and mounting nut (C2) to the threaded mounting pipe. From underneath the countertop or sink, tighten mounting nut (C2) onto valves (A & B) with adjustable wrench until snug. Secure mounting nut (C2) by tightening mounting screws (C3) with a Phillips head screwdriver

Step 4: Connect waterlines to faucet and main valve



Secure hot & cold waterlines (G) to hot and cold valves (A & B) (Hand-Tighten Only). Thread other end of waterlines to T-union (F). Attach 3/8 in. OD x 1/2 in. IPS waterlines (H) to copper pipe on valves

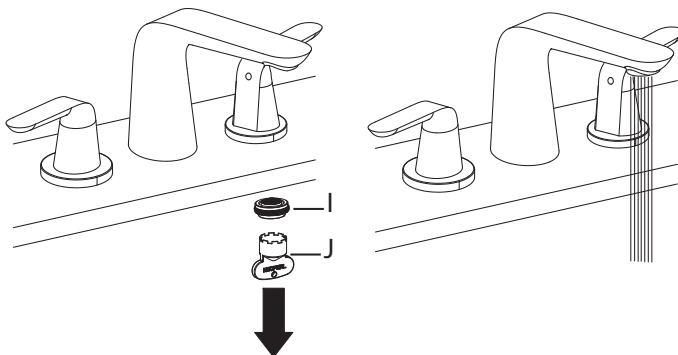
A. Hot Side: Left

B. Cold Side: Right

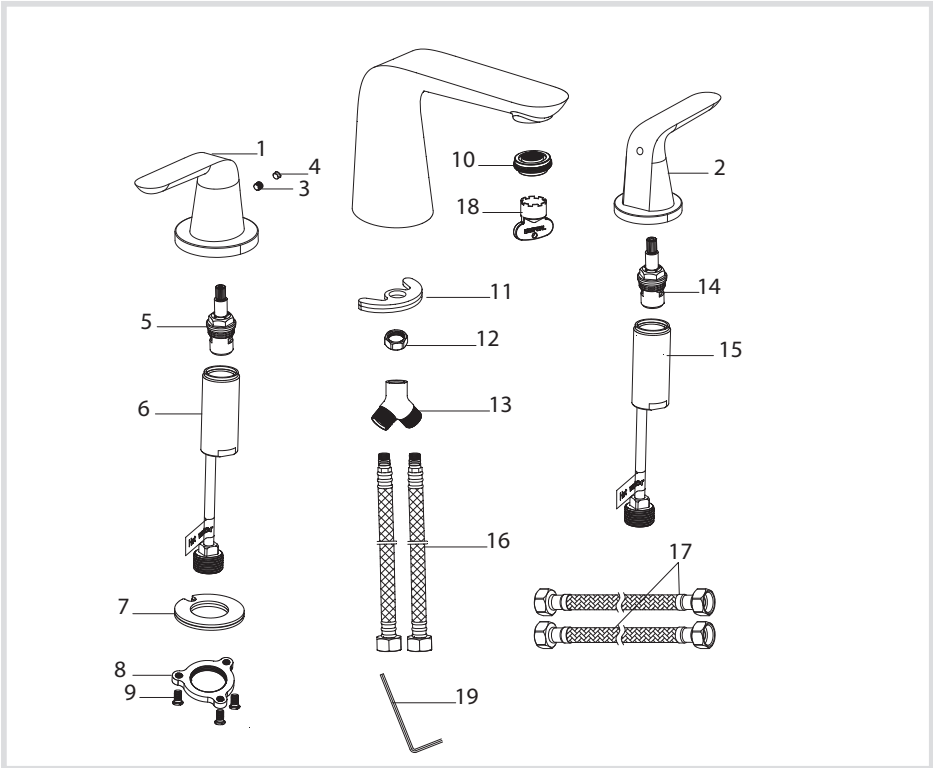
Secure other end of waterlines to angle stops. Tighten all ends with adjustable wrench until snug. Turn on angle stops and check for leaks (DO NOT TURN FAUCET ON)

Step 5: Flush faucet

Remove adjustable aerator (I) with aerator key (J). Turn water on for 1 minute to remove any debris. Reassemble adjustable aerator (I)



Replacement Part List - FVS-1823



- | | |
|--------------------------|---|
| 1. Hot Handle | 11. Rubber & Metal U Washer |
| 2. Cold Handle | 12. Mounting Nut |
| 3. Set Screw | 13. T-Union |
| 4. Cover Button | 14. Cold Cartridge |
| 5. Hot Cartridge | 15. Cold Valve |
| 6. Hot Valve | 16. Hot & Cold Waterlines |
| 7. Rubber & Metal Washer | 17. 3/8 in. OD x 1/2 in. IPS Waterlines |
| 8. Mounting Nut | 18. Aerator Key |
| 9. Mounting Screw | 19. Hex Wrench |
| 10. Adjustable Aerator | |

Trouble - Shooting

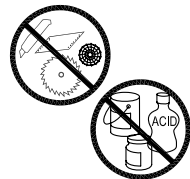
If you have followed the instructions carefully and your faucet still does not work properly, take the following corrective steps:

PROBLEM	CAUSE	ACTION
Leakage under the handle	Hot or cold cartridge (5 or 14) may be loose	Remove cover button (4). Loosen set screw (3) with hex wrench (19). Remove handle (1 or 2). Tighten hot or cold cartridge (5 or 14) with adjustable wrench
Aerator drips or has inconsistent water flow pattern	Aerator (10) may be dirty or not seated properly	Unscrew aerator (10) with aerator key (18). Remove aerator (10) and clean out debris
Water will not shut off completely	Hot or cold cartridge (5 or 14) may need to be adjusted or replaced	Remove cover button (4). Loosen set screw (3) with hex wrench (19). Remove handle (1 or 2). Remove hot or cold cartridge (5 or 14) with adjustable wrench. Check for cracks

Care & Maintenance

*To keep the product clean & shining, follow the steps below:

1. Rinse with clean water & dry with a soft cloth
2. Do not clean with soaps, acid, polish, abrasives, or harsh cleaners
3. Do not use cloth with a coarse surface
4. Unscrew the aerator and clean when necessary



*This installation manual is subject to change without further notice.

Codes/Standards Applicable:



KRAUS LIMITED LIFETIME WARRANTY

This product has been manufactured and tested to the highest quality standards by Kraus USA Inc. ("Kraus"). We offer our customers thoughtfully crafted fixtures & accessories, engineered for enduring performance over years of use.

WHO IS COVERED BY THE WARRANTY

This warranty extends to the original purchaser only. This warranty is not transferable, between homes or owners and is only applicable to residential use.

WHAT IS COVERED BY THE WARRANTY

Kraus warranties this product against defects due to material or craftsmanship error during the warranty period: Kraus will provide replacement parts at no charge, or at its option, replace any product or part of the product that is deemed defective, under normal installation, use, service and maintenance. If Kraus is unable to provide a replacement and repair is not practical or cannot be made in timely fashion, Kraus may elect to refund the purchase price in exchange for the return of the product.

CONDITIONS AND EXCLUSIONS

Like other home fixtures, Kraus products will require light maintenance to ensure proper function. We provide you with complete knowledge to perform this maintenance and can also recommend resources if you are unable to fulfill this service.

- A.** Kraus will not be responsible for product failures due to lack of maintenance or proper use. Please read your care and maintenance documentation to determine the limits of proper use.
- B.** The original sales receipt, order number, and/or proof of purchase must be presented at the time of the warranty claim, without exception, for this warranty to be applied to all Kraus products.

C. Kraus recommends installing all Kraus products with a licensed, professional plumber. Kraus will not be held responsible for any damage or product failure due to improper installation, misuse, or failure to use a licensed professional. Please read your care and maintenance documentation to determine the limits of proper use.

D. Commercial use will automatically void this warranty.

E. This warranty is not applicable to Kraus products purchased from an unauthorized seller. For a complete list of authorized sellers please visit <http://www.kraususa.com/where-to-buy.html>

NON-APPLICABILITY OF THIS WARRANTY

By the purchase and use of our products, you agree that Kraus is not liable for incidental, consequential or special damages associated with the return, replacement, installation or use of your product. This includes freight costs, cartridge replacement, labor, travel time, lost profit, home damages and other contingent liabilities and costs (including, without limitation, costs associated with experts, investigations, analyses, attorneys and other professionals and services). The Kraus warranty is a comprehensive and explicit limit of liability, and all items outside of it are not addressable by or the responsibility of Kraus. Certain states have variances regarding implied warranties and in those situations we remain fully compliant.

KRAUS USA Inc. makes no implication that products comply with any or all local building or plumbing codes. It is the consumer's responsibility to determine local code compliance. This warranty extends to the original purchaser and first consumer.

HELP LINE

For additional assistance at any point in the installation process, please call us at 1.800.775.0703 or email us at info@kraususa.com

Our customer service hours are Monday – Friday, 9am – 8pm EST.
Be sure to visit our website at www.kraususa.com

Kräus®

www.kraususa.com