

The logo features the word "Kraus" in a white, serif font on a black background. The letter "K" is stylized with a vertical line through it. Above the "a" are three small white circles, and above the "u" are two small white circles, resembling water droplets. A registered trademark symbol (®) is located to the upper right of the "s".

Kraus®

INSTALLATION MANUAL

Coda 4" Centerset Basin Faucet

FUS-13802

Thank you for purchasing Kraus

We would like to take this opportunity to thank you for your business with Kraus USA. It is our sincere hope that you are completely satisfied with your experience. We welcome any questions or comments you may have, and will be glad to assist you in the future.

For more information about Kraus products, please visit our website at:

www.kraususa.com

Please register your new Kraus product at the following web address in order to activate the warranty and receive the full benefit of customer support:

www.kraususa.com/registration

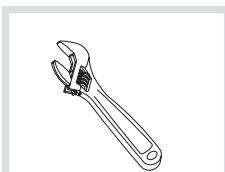
Sincerely,

Kraus Customer Service Department

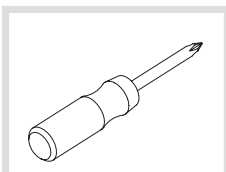
Prior to Installation:

- Make sure you have all necessary parts by checking the diagram and parts list. If any part is missing or damaged, please contact Kraus Customer Service at 800-775-0703 for a replacement
- Turn off the hot and cold water supply at the angle stops and turn on the old faucet to release any built up pressure. Remove existing faucet. Clean sink or countertop to remove any debris, plumber's putty, or silicone
- Place bucket under angle stops. Turn on to flush any debris prior to installing new plumbing. Shut off angle stops
- Max countertop thickness: 1-3/8"

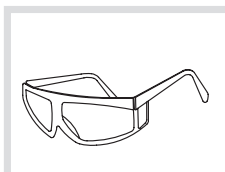
Tools you will need:



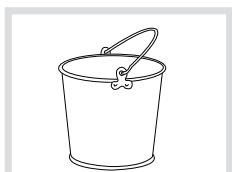
Adjustable Wrench



Phillips Screwdriver

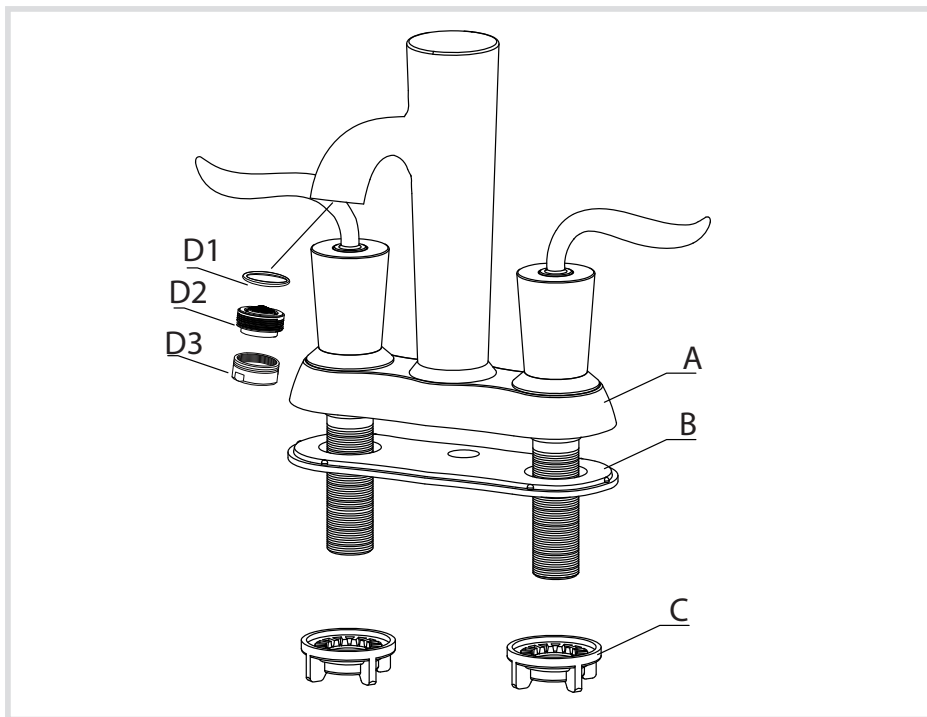


Safety Goggles



Bucket

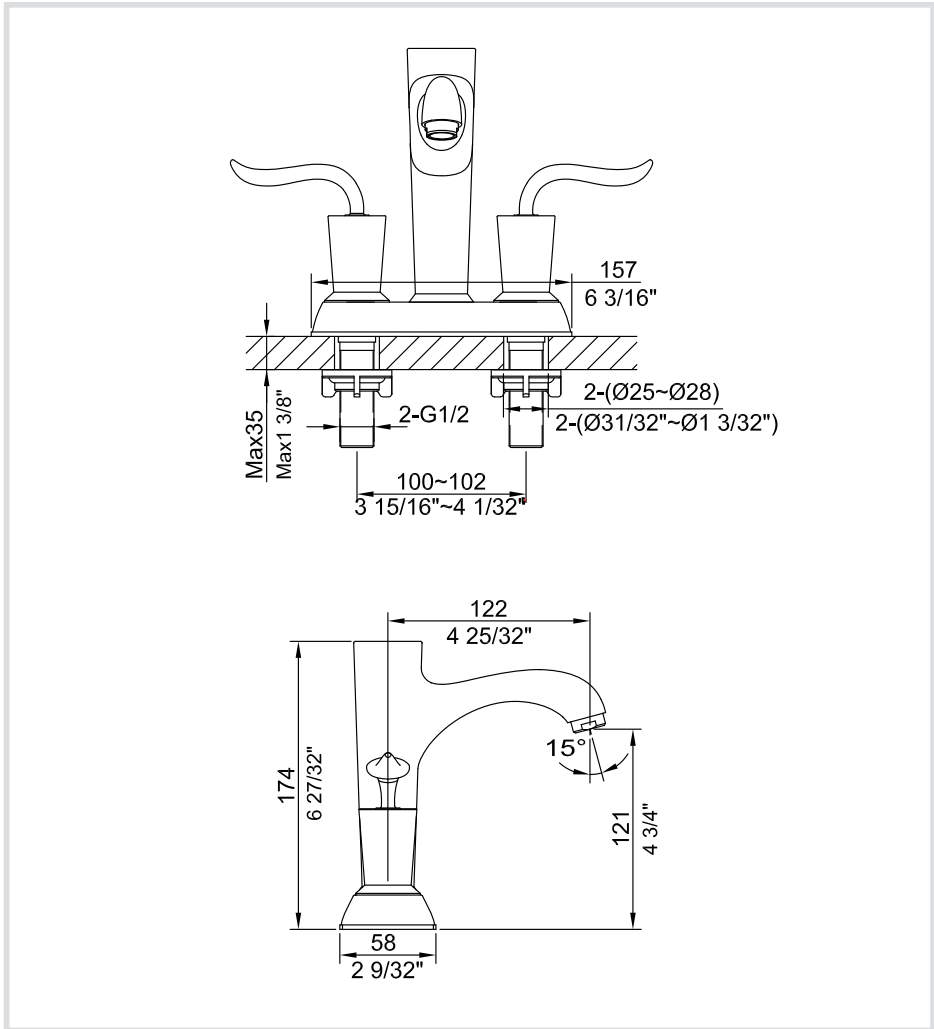
FUS-13802 Diagram and Parts List



A. Faucet Body
B. Putty Plate
C. Mounting Nut

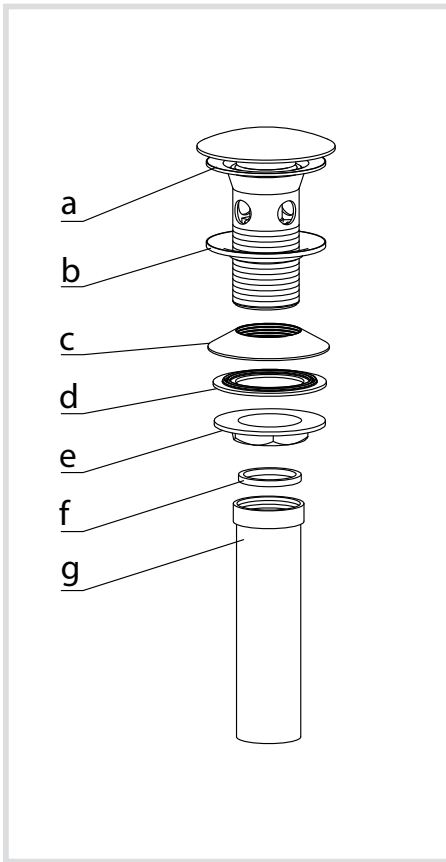
D. Aerator Assembly
D1. Aerator Washer
D2. Aerator
D3. Aerator Cover

Faucet Dimensions

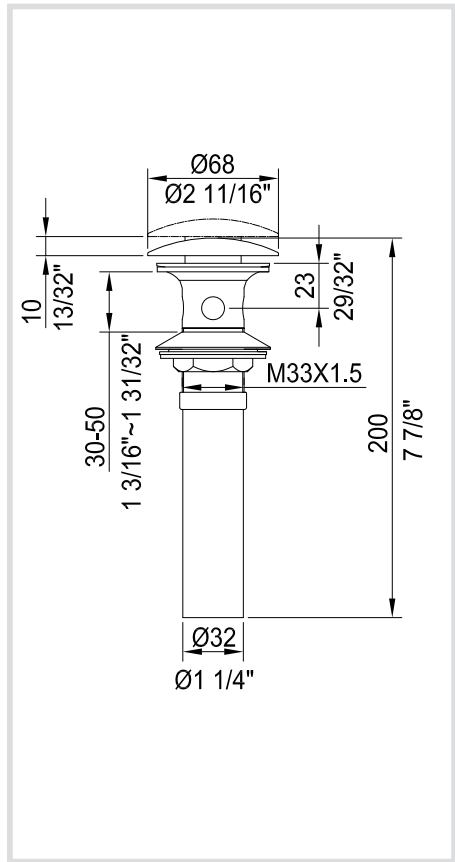


Lift Rod Drain

Diagram and Parts List



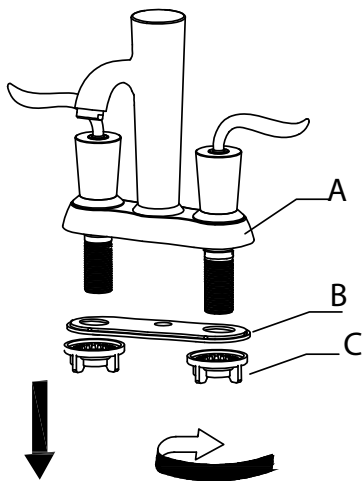
Dimensions



- a. Drain Body
- b. Rubber Washer
- c. Concave Washer
- d. Plastic Washer

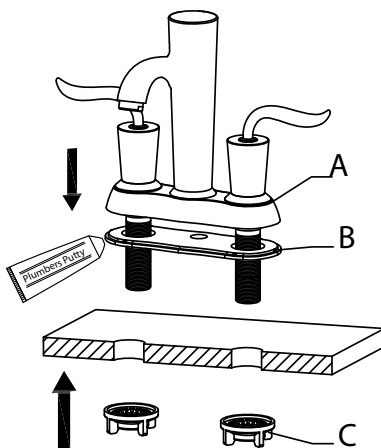
- e. Mounting Nut
- f. Tailpipe Washer
- g. Tailpipe

Step 1: Remove mounting hardware



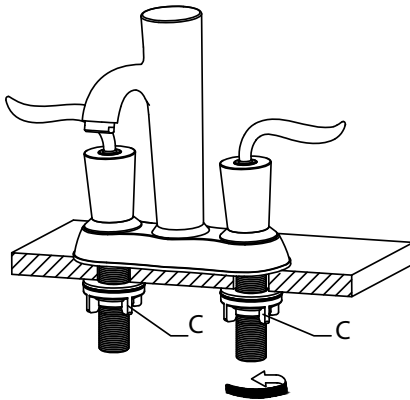
Remove mounting nut (C) and putty plate (B) from threaded mounting pipe

Step 2: Install faucet



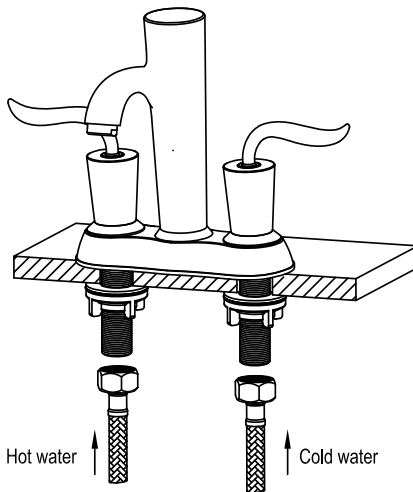
Apply a small amount of putty to the groove along the bottom outer edge of the putty plate (B). Secure putty plate (B) to faucet. Install faucet through holes in sink or countertop

Step 3: Secure faucet



Tighten mounting nuts (C) onto threaded mounting pipe from underneath the countertop or sink (HAND-TIGHTEN ONLY)

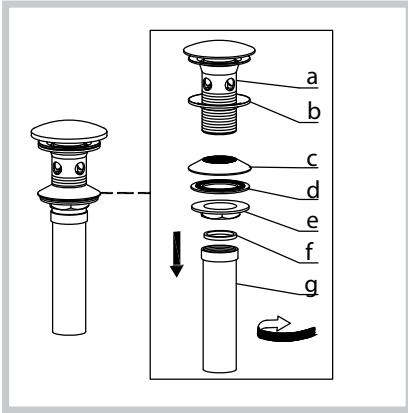
Step 4: Connect waterlines to faucet and main valve



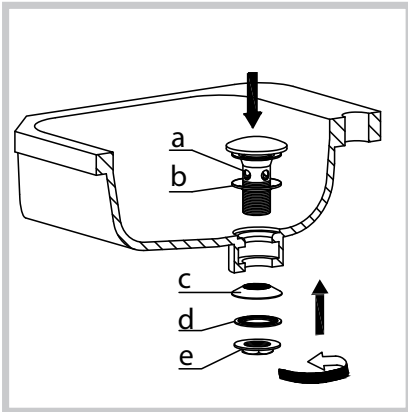
Thread hot & cold waterlines (not included with faucet) to threaded mounting pipe. (A. Hot Side: Left, B. Cold Side: Right). Secure other end of waterlines to the angle stops. Tighten both ends with adjustable wrench until snug. Turn angle stops on and check for leaks (DO NOT TURN ON FAUCET)

Please Note: Recommended waterlines: 3/8 in. OD x 1/2 in. IPS

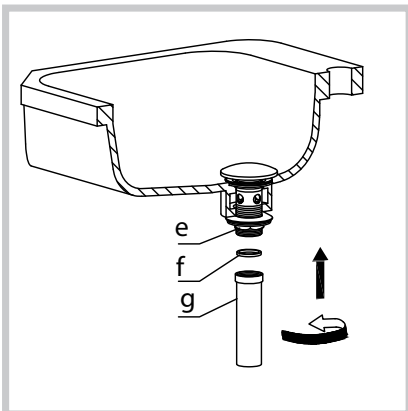
Step5: Install drain



- Remove tail pipe (g), mounting nut (e), plastic washer (d), and concave washer (c) from drain body (a)



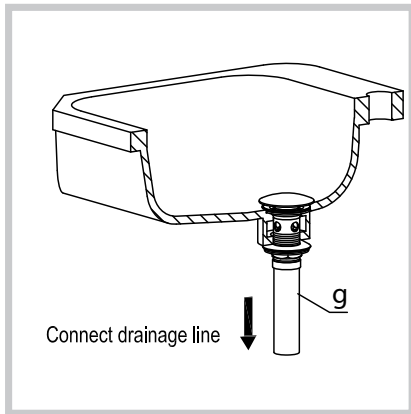
- Install drain body (a), with rubber washer (b) attached, into the drain hole. From underneath, attach concave washer (c) (narrow end up), plastic washer (d), and mounting nut (e) to drain body (a). Secure tightly to sink with an adjustable wrench



- Tighten mounting nut (e) with adjustable wrench until snug. Thread tailpipe (g) onto drain body (a) and hand-tighten

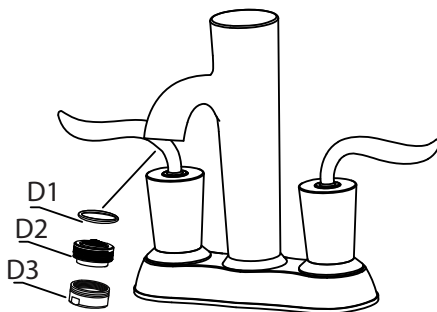
Installer Tip: Make sure tailpipe washer (f) is installed in tailpipe

Step 7: Install drain



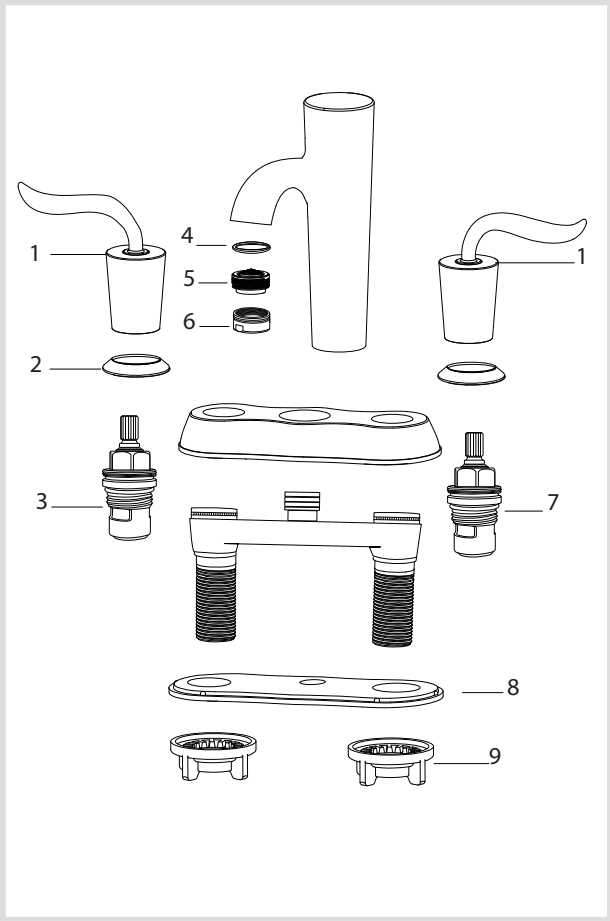
- Connect tailpipe (g) to p-trap

Step 6: Flush faucet



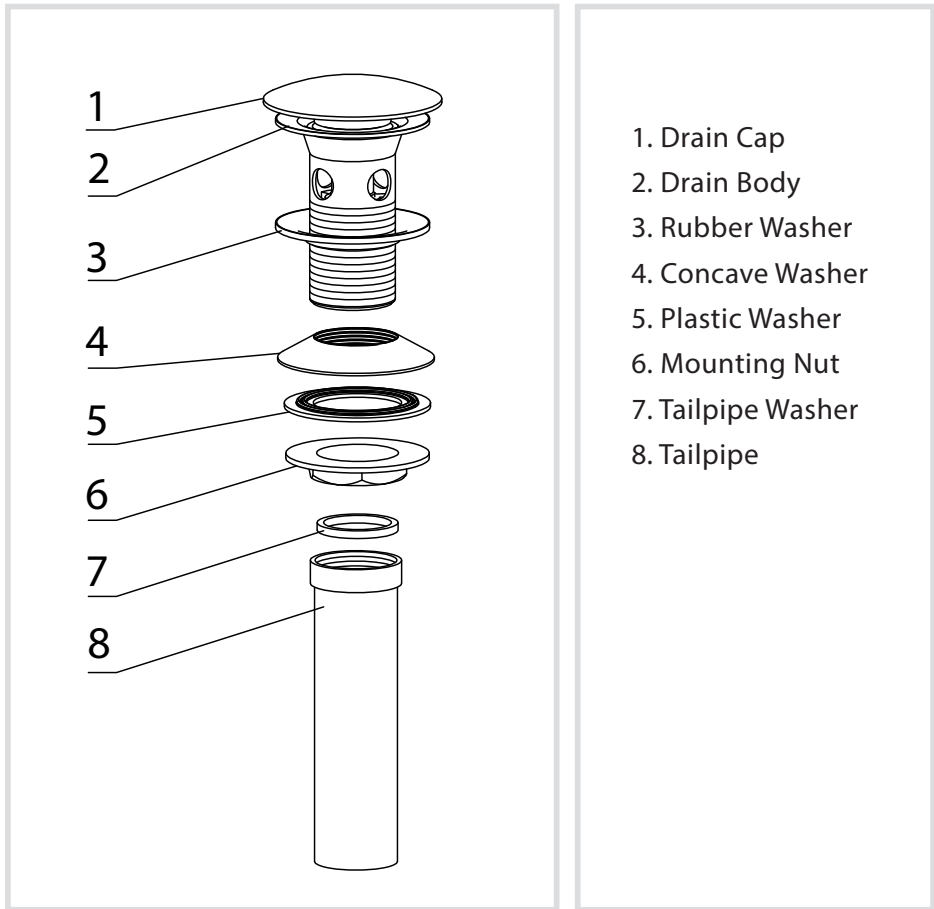
Remove aerator assembly (D). Loosen aerator cover (D3) with adjustable wrench. Remove aerator (D2) and aerator washer (D1). Turn water on for 1 minute to remove any debris. Reassemble aerator assembly (4)

Replacement Part List - FUS-13802



- 1. Metal Handle - HOT & COLD
- 2. Base Ring
- 3. Cartridge – HOT
- 4. Aerator Washer
- 5. Aerator
- 6. Aerator Cover
- 7. Cartridge – COLD
- 8. Putty Plate
- 9. Mounting Nut

Replacement Part List - Lift Rod Drain



Trouble - Shooting

If you have followed the instructions carefully and your faucet still does not work properly, take the following corrective steps:

PROBLEM	CAUSE	ACTION
Leakage under handles	Hot or cold cartridge (3 or 7) may be loose	Remove metal handle (1). Tighten hot or cold cartridge (3 or 7) with adjustable wrench
Aerator drips or has inconsistent water flow pattern	Aerator (5) may be dirty or not seated properly	Unscrew aerator cover (6) with adjustable wrench. Remove aerator (5), and clean out debris
Water will not shut off completely	Hot or cold cartridge (3 or 7) may need to be adjusted or replaced	Remove metal handle (1). Remove hot or cold cartridge (3 or 7) with adjustable wrench. Check for cracks
Drain is leaking	Washers may be compromised or installed incorrectly	Check washers to make sure they are installed correctly and not cracked

Care & Maintenance

*To keep the product clean & shining, follow the steps below:

1. Rinse with clean water & dry with a soft cloth
2. Do not clean with soaps, acid, polish, abrasives, or harsh cleaners
3. Do not use cloth with a coarse surface
4. Unscrew the aerator and clean when necessary



*This installation manual is subject to change without further notice.

Codes/Standards Applicable:



KRAUS LIMITED LIFETIME WARRANTY

This product has been manufactured and tested to the highest quality standards by Kraus USA Inc. ("Kraus"). We offer our customers thoughtfully crafted fixtures & accessories, engineered for enduring performance over years of use.

WHO IS COVERED BY THE WARRANTY

This warranty extends to the original purchaser only. This warranty is not transferable, between homes or owners and is only applicable to residential use.

WHAT IS COVERED BY THE WARRANTY

Kraus warrants this product against defects due to material or craftsmanship error during the warranty period: Kraus will provide replacement parts at no charge, or at its option, replace any product or part of the product that is deemed defective, under normal installation, use, service and maintenance. If Kraus is unable to provide a replacement and repair is not practical or cannot be made in timely fashion, Kraus may elect to refund the purchase price in exchange for the return of the product.

CONDITIONS AND EXCLUSIONS

Like other home fixtures, Kraus products will require light maintenance to ensure proper function. We provide you with complete knowledge to perform this maintenance and can also recommend resources if you are unable to fulfill this service.

- A. Kraus will not be responsible for product failures due to lack of maintenance or proper use. Please read your care and maintenance documentation to determine the limits of proper use.
- B. The original sales receipt, order number, and/or proof of purchase must be presented at the time of the warranty claim, without exception, for this warranty to be applied to all Kraus products.
- C. Kraus recommends installing all Kraus products with a licensed, professional plumber. Kraus will not be held responsible for any damage or product failure due to improper installation, misuse, or failure to use a licensed professional. Please read your care and maintenance documentation to determine the limits of proper use.
- D. Commercial use will automatically void this warranty.
- E. This warranty is not applicable to Kraus products purchased from an unauthorized seller. For a complete list of authorized sellers please visit <http://www.kraususa.com/where-to-buy.html>

NON-APPLICABILITY OF THIS WARRANTY

By the purchase and use of our products, you agree that Kraus is not liable for incidental, consequential or special damages associated with the return, replacement, installation or use of your product. This includes freight costs, cartridge replacement, labor, travel time, lost profit, home damages and other contingent liabilities and costs (including, without limitation, costs associated with experts, investigations, analyses, attorneys and other professionals and services). The Kraus warranty is a comprehensive and explicit limit of liability, and all items outside of it are not addressable by or the responsibility of Kraus. Certain states have variances regarding implied warranties and in those situations we remain fully compliant.

KRAUS USA Inc. makes no implication that products comply with any or all local building or plumbing codes. It is the consumer's responsibility to determine local code compliance. This warranty extends to the original purchaser and first consumer.

HELP LINE

Our customer service hours are Monday – Friday, 9am – 8pm EST.
Be sure to visit our website at www.kraususa.com

If you are a homeowner please contact a Kraus Customer Service Representative at:

Kraus USA, Inc.
12 Harbor Park Drive
Port Washington, NY 11050
Toll-free 800-775-0703
Customerservice@kraususa.com

If you are a plumbing contractor or trade professional please contact a Kraus Pro Representative at:

Kraus USA, Inc.
12 Harbor Park Drive
Port Washington, NY 11050
516-801-8955
Proservice@kraususa.com

If you are an Authorized Partner please contact a Partner Support Representative at:

Kraus USA, Inc.
12 Harbor Park Drive
Port Washington, NY 11050
516-801-8954
Partnersupport@kraususa.com

In requesting warranty service, please be ready to provide:

1. Proof of purchase.
2. A description of the problem.

Kräus®

www.kraususa.com