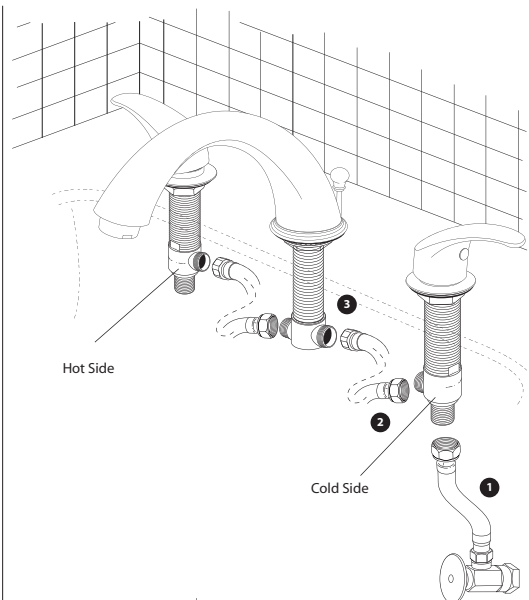


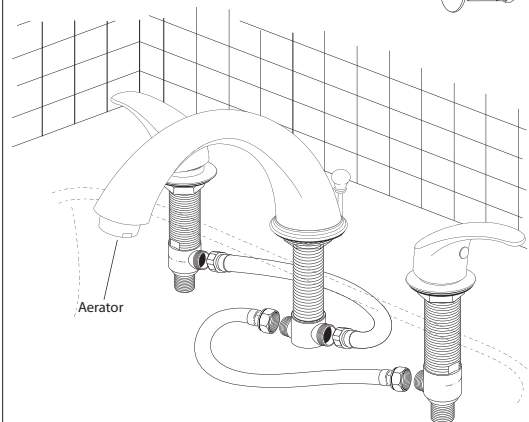
Hose Connections Installations

- 1 When installing the supply lines first install the supply hoses from the angle valves in the wall to the bottom inlet of the hot and cold valves (these hoses are not supplied). Hand tighten each connection plus an extra half turn with a wrench. Make sure the connection is tight and secure (do not over tighten). Install the cold side water supply to the bottom inlet of the cold side valve body, and hot side water supply to the bottom inlet of the hot side valve.
- 2 Once the bottom supply lines are connected, use the hoses that are included in the box to connect the side outlets to the T-connector. Connect the 1/2" hex nut side of the supply hose to the side outlet of the cold valve. Hand tighten plus half turn with a wrench (do not over tighten)
- 3 Next, connect the 3/8" compression fitting at the other end of the supply hose to the T-connector that is installed at the bottom of the spout shank. Again hand tighten or tighten with a wrench until snug and turn an extra half a turn (make sure not to over tighten)



Flush System & Inspect

- 1 Once the faucet installation has been completed properly. Clean up the working area and clean up around all connecting points on the faucet i.e. hose connection, T-connector, flanges, spout, etc. This is very important for inspecting the faucet for leaks after installation.
- 2 Once the work area is cleaned up remove the aerator from the faucet by unscrewing it from the opening in the spout. Next, turn on both the hot and cold valves and let the water run for about 2-3 minutes. This will flush out any debris from inside the faucet. While the water is running inspect the installation from above and below to make sure there are no minor leaks.
- 3 Finally, replace the aerator (do not use tape seal or joint compound when replacing)



HUNTINGTON BRASS



Faucet Models:

- HB9610P
- HB9610J (shown)
- HB9610
- HB9110J
- HB9110
- HB9310M
- HB9310

Professional Wide Spread

Before Your Installation

- Read all instructions carefully.
- Assemble all tools.
- Turn off main water supply before removing old faucet and fixtures.
- Clean surface before installing new faucet.
- Insert a cloth or stopper into drain to prevent small parts from getting lost.
- HB recommends that when cleaning your HB faucet to only use soap and warm water. The use of any chemical substance will void the finish warranty.

Tips for Successful Installations

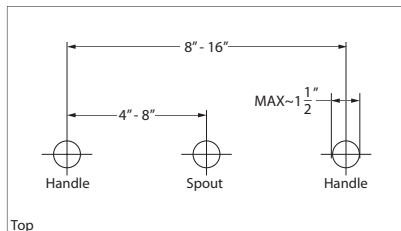
- Use joint compound or Teflon® tape on all threaded connections to prevent leaks except on aerators.
- Use a soft cloth to protect the faucet's finish when using a wrench, pliers or other tools that could scratch the faucet.
- Tighten all hose connections by hand plus half turn with wrench. Do not over tighten.
- Before turning main water supply back on, open several faucets around the house to prevent pressure from building up and sustaining damage do to water hammer. Remove aerator from faucet before turning on water. Flush drain for several minutes before replacing aerator. DO NOT use joint compound or Teflon® tape to reconnect aerator.
- DO NOT use "plumbers putty" or any oil based sealant. HB recommends silicon caulking to be use to seal drain flange and other parts.
- If you experience problems with the installation consult a professional plumber.





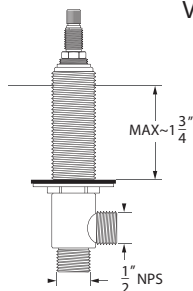
**HUNTINGTON
BRASS**

Installations Measurement



Help Info? Please call Toll-FREE customer service line at 1-800-888-6604 for additional assistance service.

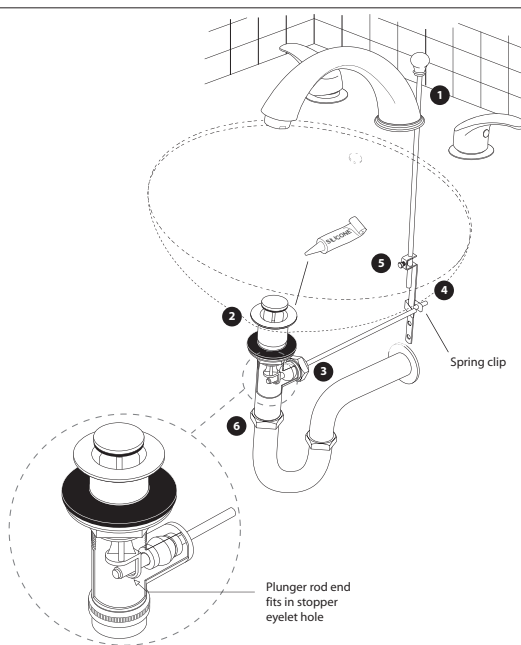
Valve Specification



Pop-up Assembly Installations

- 1 Slide lift rod through hole in the spout of the faucet.
- 2 Remove the flange from the top of the pop-up drain assembly. Loosen the lock nut on the body of the drain assembly and push up through the drain hole in the sink. Use silicone caulking and place a generous amount on the bottom of the drain flange and screw back onto the drain assembly body sticking up through the drain hole (some pop-ups may include a thin rubber washer that can be used in place of the silicone caulking) From underneath pull the drain assembly down and tighten the lock nut from the bottom with a wrench until tight. Make sure that the collar washer is snug in the drain hole from the bottom such that it will not leak water. Make sure that when tightening the lock nut that the plunger rod connection hole is face directly backwards.
- 3 Making sure that the plunger rod connection is facing back, remove metal lock nut from the hole in back of drain assembly. Then Remove spring clip from the plunger rod. Slide the cone seal and the locknut over long end of plunger rod until touching the ball joint. Next, Insert stopper into the drain collar and hold with eye-screw hole facing back. Insert short end of pivot rod into opening in rear of drain assembly (make sure the inner cone seal is installed and the rod goes through the eyelet in the stopper) Remember to apply tape or compound to threads. Tighten lock nut keeping ball in place. Make sure pivot rod can still move. Test the stopper function by moving the plunger rod up and down.
- 4 Next, Slide one end of spring clip onto pivot rod. Then slide end of pivot rod through hole in lift rod strap. Slide other end of spring clip onto pivot rod. Pinch spring clip to tighten.
- 5 Insert bottom of lift rod into hole at top of lift rod strap. Tighten thumb screw.
- 6 Connect the tail piece to the bottom outlet of the pop-up drain assembly if not done so already. Next, Connect the Tail piece to the top connection in the drain trap.

The Tools You May Need

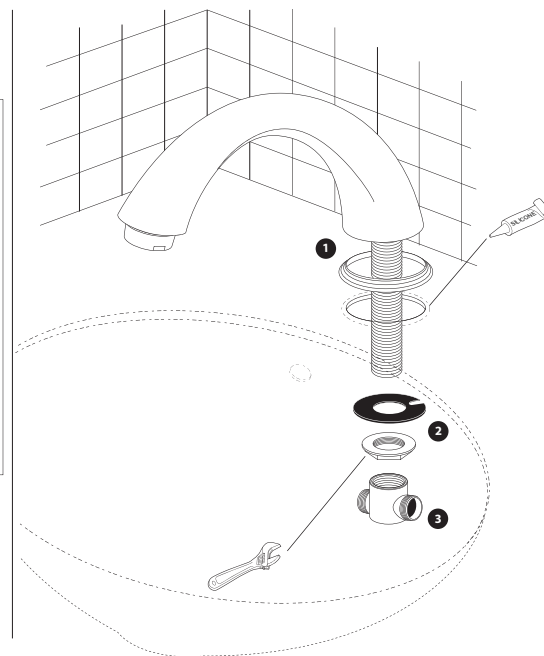


Spout Installations

- 1 Place the spout with the flange installed (if applicable) down into the center hole on the sink or counter surface. Use silicone caulking to seal around the flange.
- 2 Once the spout is installed in the center hole, from underneath put the mounting flange onto the shank of the spout and then use the lock nut and tighten down with a wrench until the spout does not move.
- 3 Finally, connect the T-connector to the bottom of the spout shank. Make sure that the rubber washer is installed and that the T-connector is screwed on tight. Hand tighten the T-connector (do not over tighten)

* Make sure when installing the spout that all threaded connections are tightened properly. Also make sure that surface connections are sealed either by using a rubber washer or silicone caulking.

** HB9110 faucets will not include a spout flange



Handle Installations

- 1 Loosen the lock on both valve bodies until enough space is given on the shank to fit into the counter surface. Place the cold side valve up through the bottom of the right side hole in counter top. (the hot and cold valves are clearly marked)
- 2 Screw the top flange onto the valve body until there is enough distance so that the handle will not touch when installed. (test by placing the handle onto the stem and hold the valve body level) Tighten the valve lock nut from underneath just slightly such that valve body can still twist back and forth.
- 3 Next, Install the handle tip by loosening the set screw on the inside of the handle. (any hot or cold indicators may have to be removed first) Slide the handle tip over the cartridge stem and turn towards the off position. Adjust the positioning of the valve such that the handle is in desired position. Handles should turn clockwise to the "on" position on the cold side, and counter-clockwise to the "on" position on the hot side.
- 4 Finally, from underneath tighten the valve lock nut with a wrench until secure (do not over tighten) Make sure that the lock nut and flange are level with the under side of the mounting surface.

