

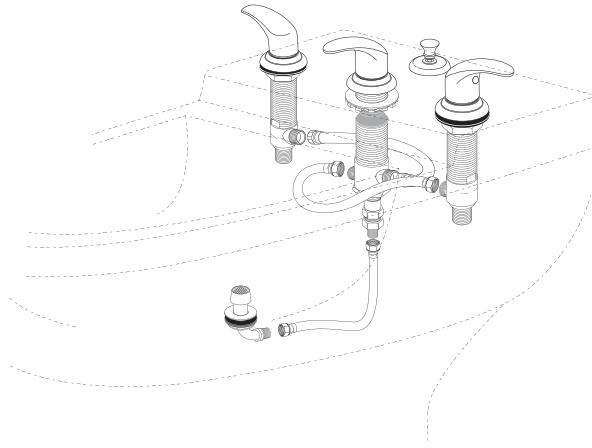
Hose Connections Installations

Sprayer hose installation:

Connect the hose to douche spray elbow union and connect the other end of sprayer hose to the bottom outlet of the vacuum breaker on the diverter valve. Tighten down hose connections.

Supply line hoses:

Connect one side of the hose to the outlet of the cold valve body, and connect the other end to the opposing inlet of the diverter valve. (Looping the hoses around as shown in the diagram will make for an easier installation) Repeat this step for the hot side supply line. (Hand tighten all hose connections with additional 1/2 turn with wrench. DO NOT OVERTIGHTEN)



Pop-Up Installations

1) Install bidet pop up rod holder first. Insert the holder onto the top of the bidet and from the bottom lock it into place using bracket provided and screw on the lock nut.

2) Remove pop-up plunger from the center of drain assembly.

3) Unscrew drain flange and remove thin rubber gasket.

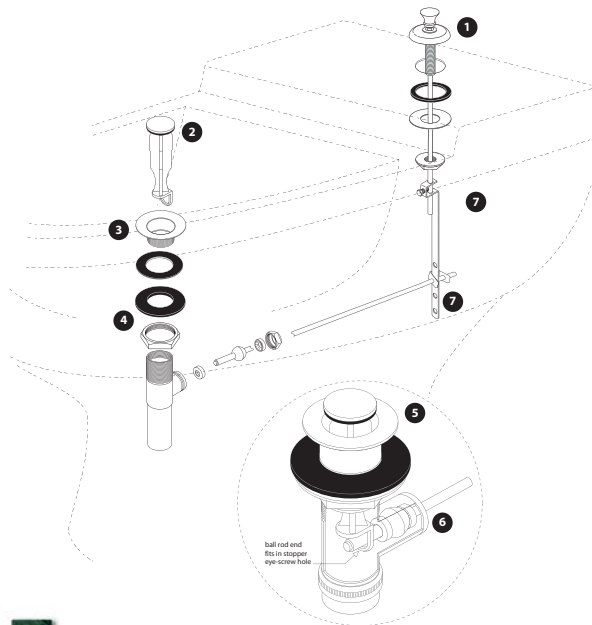
4) Loosen metal locknut as far as possible. Apply generous bead of silicon caulking to bottom of drain flange and set on drain opening in bidet. Do not use plumbers putty or any other oil based sealant. This may void finish warranty. If pop-up comes with a top washer this washer can be used instead of the silicone caulking. Insert drain assembly into drain hole from the bottom of bidet. Push thick round rubber gasket, up into bottom of drain opening, screw drain assembly into flange. Adjust so pivot rod opening is to the rear. Tighten the metal lock nut. Silicone caulking will ooze out from flange, immediately wipe clean with wet cloth.

5) Insert pop-up plunger into drain such that the eye loop in bottom of pop-up is to the back of the drain assembly.

6) Slide seal and locknut over long end of pivot rod and onto ball. Insert short end of pivot rod into opening in rear of drain assembly so that rod goes through the eye loop in the plunger. Tighten locknut keeping ball in place. Make sure pivot rod can still move. Test to ensure pivot rod moves the pop-up plunger.

7) Slide one end of spring clip onto pivot rod. Slide end of pivot rod through hole in lift rod strap. Slide other end of spring clip onto pivot rod. Pinch spring clip closed.

8) Insert bottom of lift rod into hole at top of lift rod strap. Tighten thumb screw. Connect drain assembly to main drain tap.



11100 Dana Circle Cypress, CA 90630 Tel : 800-888-6604 | Fax : 888-455-5007



HUNTINGTON BRASS



Professional Bidet Faucet

Faucet Models:

- HB3510 (shown)
- HB3510J
- HB3510P

Before Your Installation

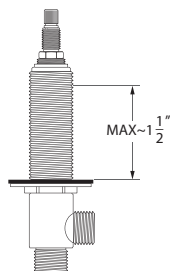
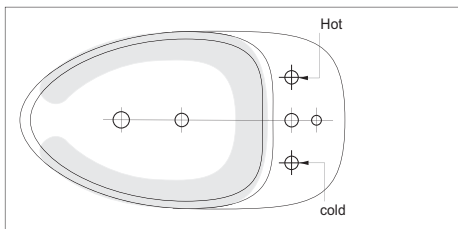
- Read all instructions carefully.
- Assemble all tools.
- Turn off main water supply before removing old faucet and fixtures.
- Clean surface before installing new faucet.
- Insert a cloth or stopper into drain to prevent small parts from getting lost.
- HB recommends that when cleaning you HB faucet to only use soap and warm water. The use of any chemical substance will void finish warranty.

Tips for Successful Installations

- Use joint compound or Teflon® tape on all threaded connections to prevent leaks.
- Use a soft cloth to protect the faucet's finish when using a wrench, pliers or other tools that could scratch the faucet.
- Tighten all hose connections by hand. Do not over tighten.
- Before turning main water supply back on, open several faucets around the house to prevent pressure from building up. Remove aerator from faucet before turning on water. Flush drain for several minutes before replacing aerator. DO NOT use joint compound or Teflon® tape to reconnect aerator.
- DO NOT use "plumbers putty" or any oil based sealant. HB recommends silicon caulking to be used to seal drain flange and other parts.
- If you experience problems with the installation consult a professional plumber.

www.huntingtonbrass.com

Installations Measurement



Diverter Valve with Vacuum Breaker Installations

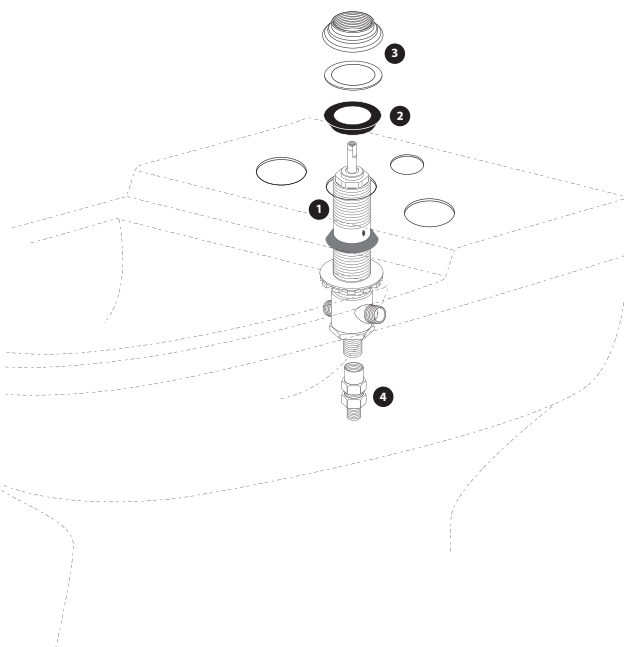
Install the transfer valve:

First remove the handle trim parts from the diverter valve if not done so already. Make sure to loosen the bottom lock nut such that the diverter can be inserted into the bidet properly. 1) Remove the top rubber cone washer and Insert transfer valve with the vacuum breaker through center hole on top of the bidet. 2) From the top, install the other rubber cone washer onto the top of the diverter. The two rubber cone washers must make a proper seal on the top and bottom surfaces of the bidet center hole. 3)Screw the handle escutcheon ring with washer onto the top of the diverter valve, screw down to the desired position to fit with the handle tip style that was selected (different handle will have different measurements) From the bottom tighten the bottom lock nut such that the diverter valve is secure and the rubber cone washers seal properly. Make sure transfer valve is tight enough. The diverter valve should not move freely back and forth when the handle is use to rotate the valve stem. You can test this by placing the handle tip onto the valve stem and turning left to right. If the diverter body turns simultaneously then it is not tighten sufficiently. Once installation is complete check to make sure no leakage is coming from the rubber cone washers.

Vacuum Breaker installation:

4)Install the vacuum breaker unit to the bottom out let of the diverter valve if not done already.

The Tools You May Need



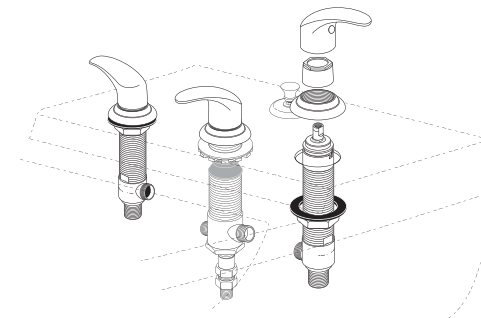
Shut off Valve / Handle Installations

Hot and Cold valve bodies:

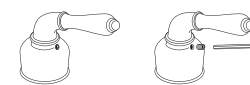
To install the hot and cold valves. First screw down the bottom lock nut and rubber washer. Insert the valve neck through the appropriate hole in bidet (hot is on the left, cold is on the right) From the top screw the escutcheon ring onto the top of the valve shank. Position the valve so that the flat part of the cartridge stem is facing outward when in the off position. From the bottom tighten the lock nut with a wrench such that the valve body is secure.

Handle tip installation:

Insert the handle tip onto the cartridge stem. (Double check that the handle is pointing outward when the valve is in the off position) Secure the handle tip by tightening the set screw with a hex wrench as shown. You can adjust the escutcheon ring to fit desired handle if the gap between the handle and escutcheon is too big or small by loosening the bottom lock nut on the valve and adjusting the position of the escutcheon ring. Using a wrench re-tighten the lock nut from the bottom.



"Citidel" Handle



"Jenova" Handle



"Phoenix" Handle



Spray Installations

Douche spray and union installation:

Insert the douche spray, flange, and washer through the top of bidet. From the bottom put one rubber washer underneath with the elbow union, so that it seals on the underneath side of the bidet. From the top, put the rubber washer and flange in place and then screw spray and elbow union together. Before tightening the douche spray completely make sure that the elbow union connection is facing towards the back of the bidet. Once in position tighten down until secure.

